



Chapman Street, E1

£374,995

Offered to the market is this split level three bedroom property located on Chapman Street of which is a short walk away from Shadwell Station. The property comprises three double bedrooms, large reception room which leads out onto the balcony and a separate kitchen.

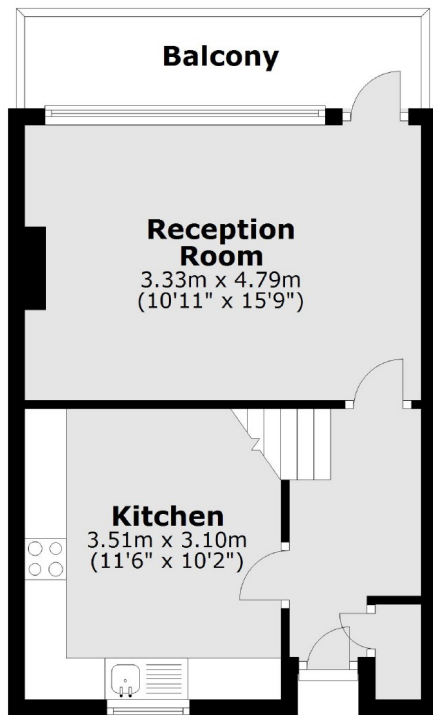
Chapman Street in the London Borough of Tower Hamlets is located close to Shadwell DLR station and is close to Commercial Road meaning there are very good links to get into the city centre. Watney Market is a short walk away offering multiple market stalls and shops.

Features

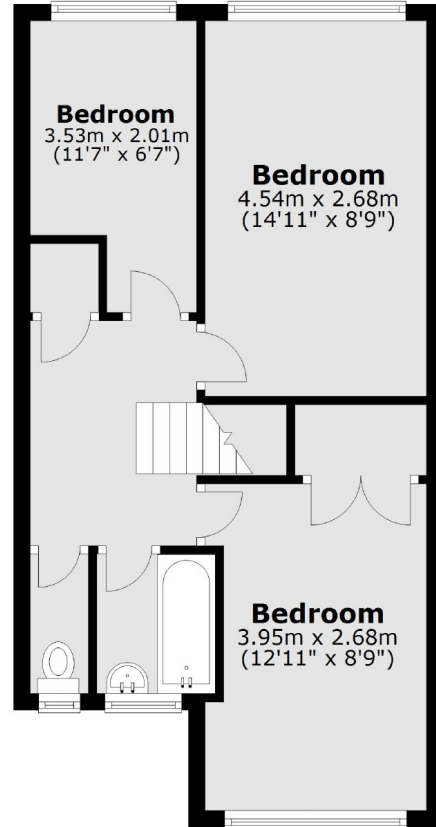
- Three Bedroom
- Split Level
- Leasehold
- Balcony
- Ex Local Authority
- Close to Local Amenities

Chapman Street, London, E1

Second Floor



First Floor



Main area: Approx. 75.4 sq. metres (811.2 sq. feet)
Plus balconies, approx. 5.8 sq. metres (62.3 sq. feet)