



## Wapping Lane, E1W

£275,000

Guide Price £275,000- £300,000. A second floor one bedroom apartments offering 409 sq.ft of ample living space. Features include open plan reception with access to balcony, secure entry phone system and no onward chain.

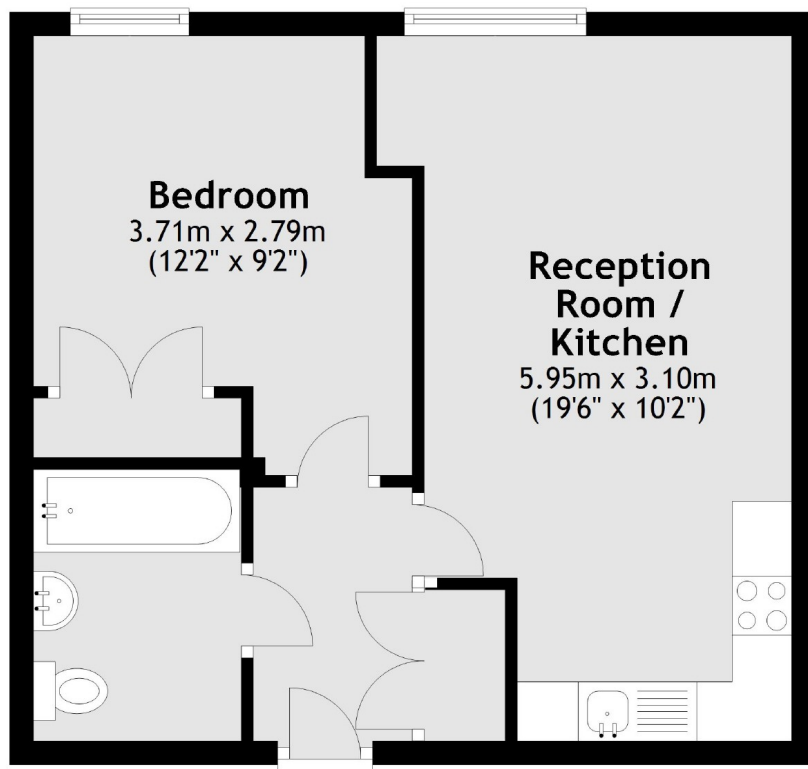
Eluna Apartments is 0.2 miles from Shadwell DLR Station and 0.4 miles from Wapping Overground Station. Both offer good links to The City and Canary Wharf. Liverpool Street can also be accessed on foot as only 1.4 miles away from the property.

### Features

- 409 sq.ft
- Open Plan Reception
- No Onward Chain
- EWS1 Compliant
- Lift Access
- E1W Location

Wapping Lane,  
London, E1W

## Second Floor



Total area: approx. 38.0 sq. metres (409.0 sq. feet)