



R
L

Manor Lodge Manor Park

Ruddington | NG11 6DS | Price £263,950

**ROYSTON
& LUND**

- Retirement Apartment
- Owners Lounge
- More apartments available
- No chain
- EPC rating TBC
- One bedroom
- Recently built
- Leasehold
- Situated close to the country Park
- Council tax band TBC

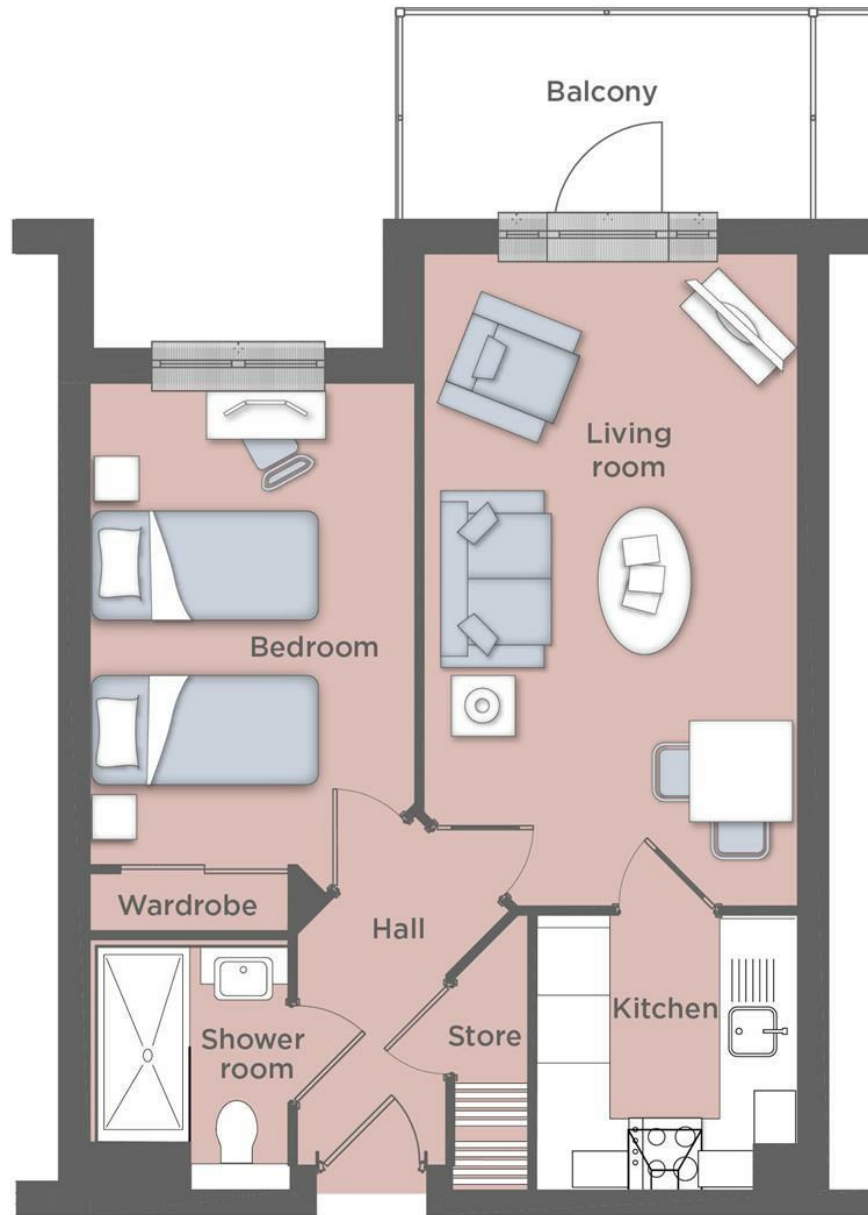




We are pleased to confirm that first owners have now moved into our brand new retirement development – Manor Lodge on the leafy Manor Park private road in Ruddington and are enjoying the retirement they deserve..



Manor Lodge comprises of 43 one and two bedroom apartments and features a Coffee Bar and Owners' Lounge, giving Owners the perfect place to sit together and have a catch up over a hot drink, or nestle in the corner with a good book. Our first owners have now moved in, call us today to find out more.



EPC

Energy Efficiency Rating

	Current	Potential
Very energy efficient - lower running costs		
(92 plus) A		
(81-91) B		
(69-80) C		
(55-68) D		
(39-54) E		
(21-38) F		
(1-20) G		
Not energy efficient - higher running costs		

England & Wales EU Directive 2002/91/EC

Environmental Impact (CO₂) Rating

	Current	Potential
Very environmentally friendly - lower CO ₂ emissions		
(92 plus) A		
(81-91) B		
(69-80) C		
(55-68) D		
(39-54) E		
(21-38) F		
(1-20) G		
Not environmentally friendly - higher CO ₂ emissions		

England & Wales EU Directive 2002/91/EC

These particulars, whilst believed to be accurate are set out as a general outline only for guidance and do not constitute any part of an offer or contract. Intending purchasers should not rely on them as statements of representation of fact, but must satisfy themselves by inspection or otherwise as to their accuracy. No person in this firm's employment has the authority to make or give any representation or warranty in respect of the property.

**ROYSTON
& LUND**