



5 Liberty Walk, St. Albans, AL1 5PN

Guide price £575,000 Freehold



ESTATE AGENTS

5 Liberty Walk

St. Albans, AL1 5PN

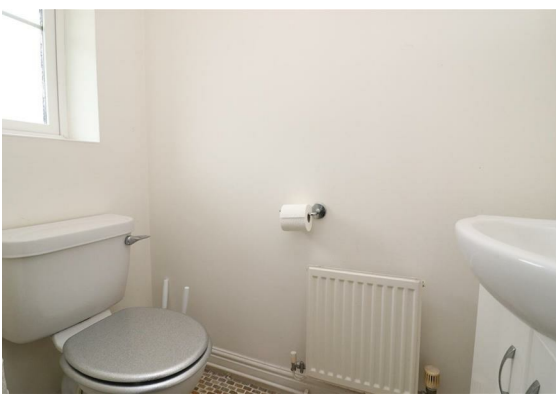
An attractive three bedroom house located in a peaceful close and accessed via a private road in the popular camp area of St Albans to the east of the City Centre. The property offers bright and spacious accommodation with the additional benefit of a garage and a private rear garden.

The accommodation begins with a welcoming entrance hall with stairs to the first floor and doors to rooms including a convenient downstairs W.C. The spacious lounge/dining room has a window and French doors out to the rear garden. The recently re-fitted kitchen provides a complimentary range of neutral wall and base units with quartz work tops above and an integrated gas hob with an oven below and extractor above. There is also a recently fitted gas boiler and recesses for a washing machine, dishwasher and fridge/freezer.

The first floor landing has doors to rooms and a useful storage airing cupboard. The master bedroom benefits from two windows to the front and mirrored wardrobes. There are two further bedrooms over-looking the rear garden, a loft hatch and a modern re-fitted bathroom with a bath with shower above, basin with storage below and W.C.

Externally there's a low-maintenance frontage and a driveway leading to a garage with an up and over door and great eaves storage space. The private garden begins with a patio which is ideal for entertaining, a lawn and to the rear is a wooden storage shed.

Liberty Walk is a private close in an established residential area within close proximity to a number of popular primary schools and the sought after Samuel Ryder school. The mainline train station to St Pancras Int. is within 1 mile, there are a number of local shops close by, a local park and the extensive Highfield Park.





ACCOMMODATION

Hallway

Cloakroom W.C

Kitchen

10'10 x 6'9 (3.30m x 2.06m)

Living/Dining Room

17'3 x 13'7 (5.26m x 4.14m)

FIRST FLOOR

Bedroom One

9' x 13'8 (2.74m x 4.17m)

Bedroom Two

13'5 x 7'4 (4.09m x 2.24m)

Bedroom Three

10'1 x 6'4 (3.07m x 1.93m)

Family Bathroom

EXTERNAL

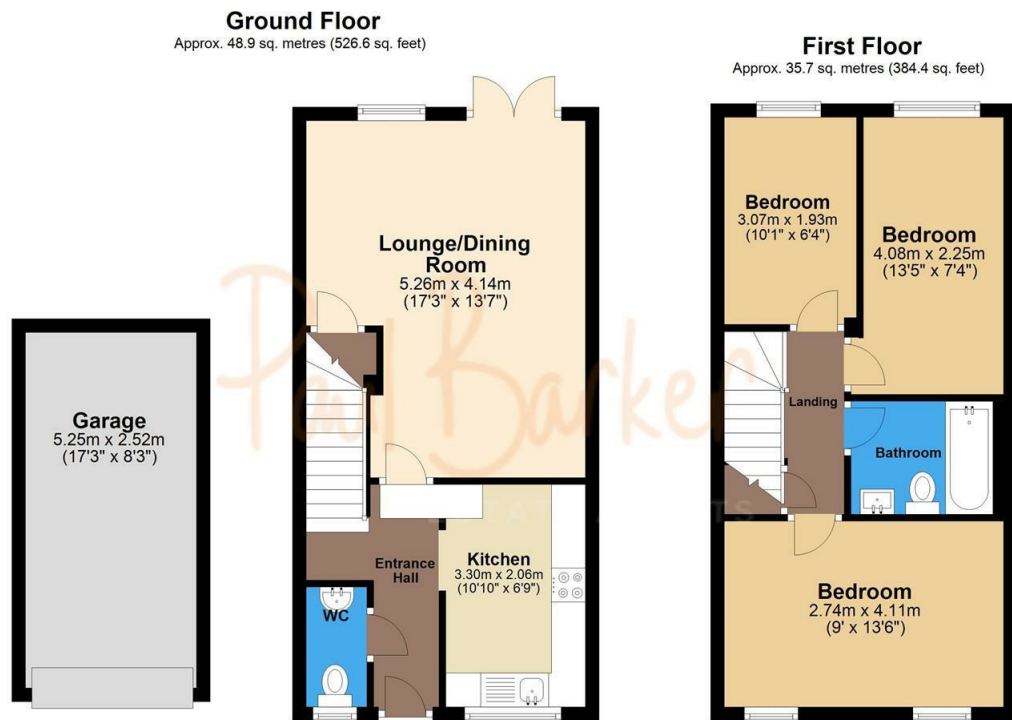
Front Parking

Garage

17'3 x 8'3 (5.26m x 2.51m)

Rear Garden and Shed

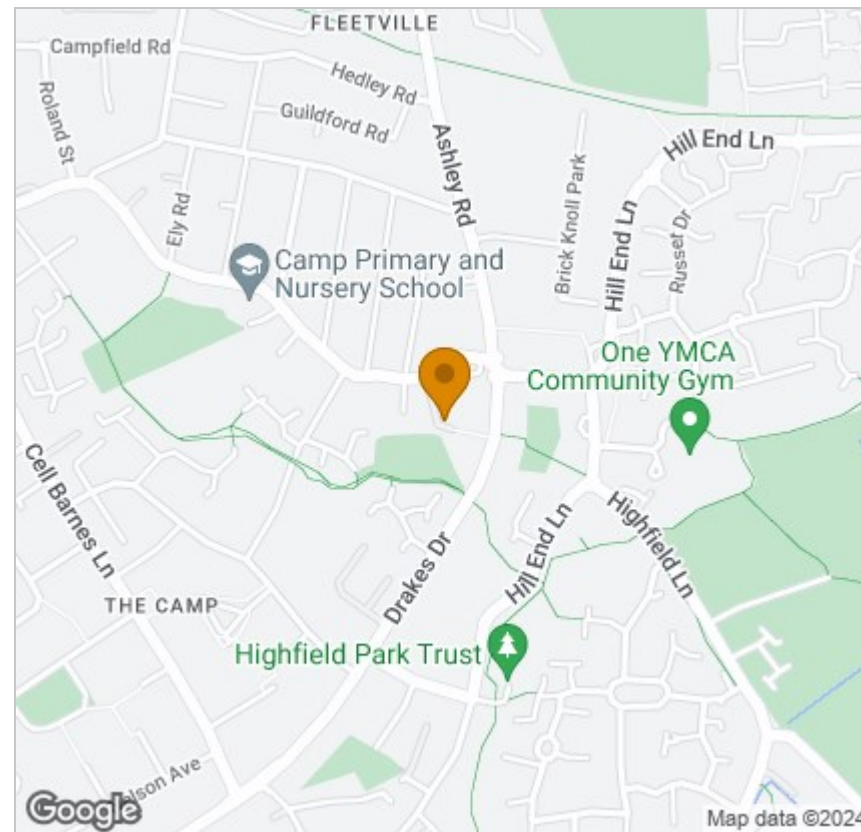
Floor Plan



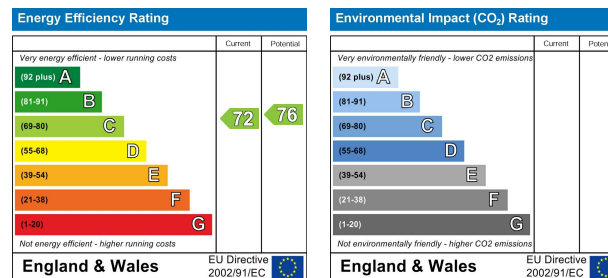
Total area: approx. 84.6 sq. metres (911.0 sq. feet)

Disclaimer - Floor plan is for marketing purposes only and is to be used as a guide - SKM Studio Plan produced using PlanUp.

Area Map



Energy Efficiency Graph



Viewing

Please contact our Office on 01727 223344 if you wish to arrange a viewing appointment for this property or require further information.

These particulars, whilst believed to be accurate are set out as a general outline only for guidance and do not constitute any part of an offer or contract. Intending purchasers should not rely on them as statements of representation of fact, but must satisfy themselves by inspection or otherwise as to their accuracy. No person in this firm's employment has the authority to make or give any representation or warranty in respect of the property.