

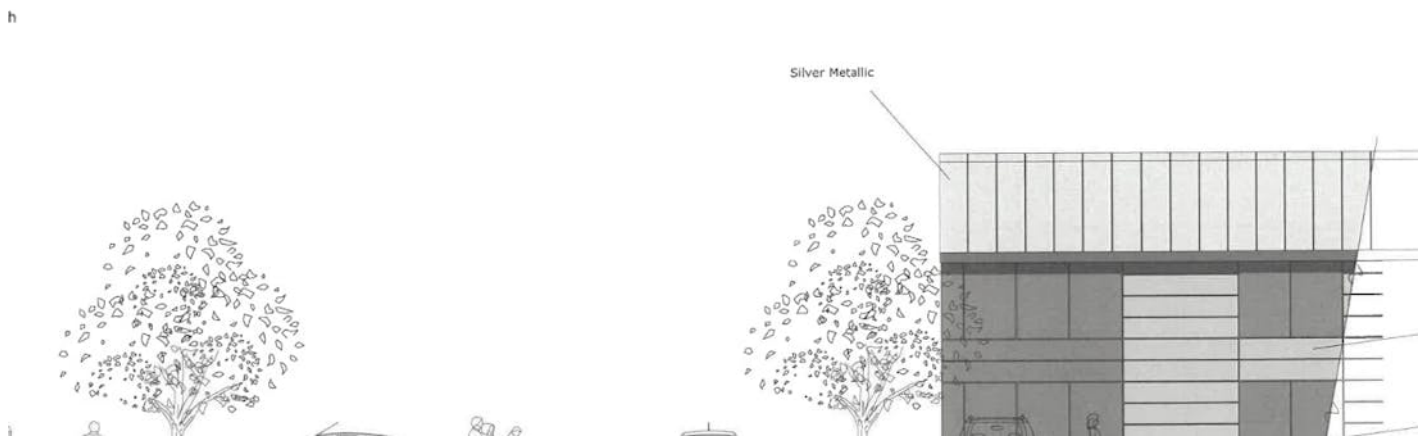
Tel: 01844 261121
Web: www.fieldscommercial.co.uk
Email: enquiries@fields-property.co.uk

FIELDS

commercial property
land and new homes

To Let

2-6 Jefferson Way, Thame, OX9 3SZ



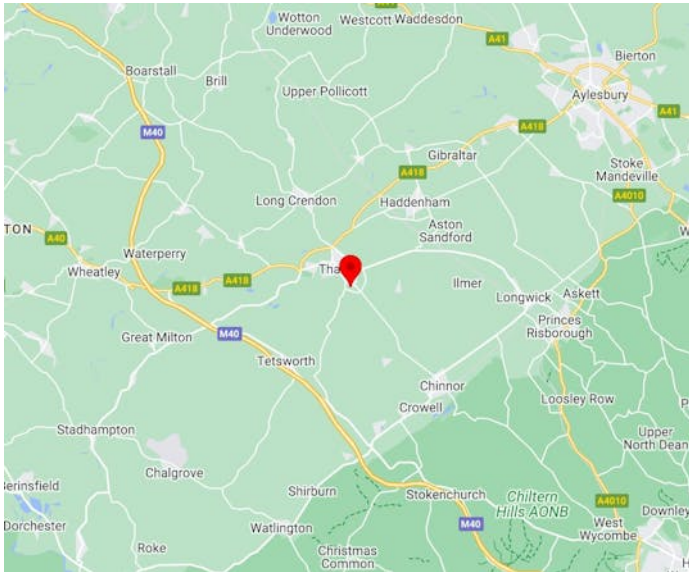
Retail & Children's Nursery Opportunities Proposed For 2026 In New Build Scheme With Prominent Ring Road Location.

Size: 4,800 - 10,000 Sq Ft

Fields Commercial | 5a Cornmarket | Thame | Oxfordshire | OX9 3DX

Messrs Fields themselves and for the vendors or lessors of this property whose agents they are given notice that: [1] the particulars are in good faith and are set out as a general guide only and do not constitute any part of contract; [2] no person in the employment of Messrs Fields has any authority to make or give any responsibility or warranty whatever in relation to this property.
Generated on 13/06/2024





Features:

- Retail & Children's Nursery Opportunities
- From 4,800 Sq ft to 10,000 Sq ft GIA
- Prominent Ring Road Location
- New Build Development for 2026 subject to planning

EPC - EPC exempt - Due for demolition

Location

Prominent location on the ring road and the corner of Jefferson Way, on the southern side of Thame, a short distance away from the Town Centre and all its amenities, allowing easy access to Junction 6 of the M40 motorway only approx. 6 miles away.

Description

Convenience Store / retail & Children's Nursery opportunities.

A proposed new build scheme for 2026 comprising units of 4,800 Sq ft and 5,200 Sq ft, subject to planning.

New steel portal frame building proposed with insulated composite panels subdivided in two, with scope for mezzanine floor in Unit 2.

Unit 1 Convenience Store: 4,800 Sq ft approx. & 14 car spaces

Unit 2 Children's Nursery: 5,200 Sq ft approx. & 13 car spaces

Rates

The development is located in South Oxfordshire rating authority.

Rateable value: To be assessed.

Rates payable: To be assessed.

Terms

New leases available.

Rent on application.

Viewings

Strictly by appointment with Fields.

Please note the existing business is unaffected in the interim