



# Central Quay

## Glasgow

---

2 Central Quay  
Glasgow G3 8BW

---

11,067 sq ft to 30,977 sq ft  
95 car parking spaces

[glasgowcentralquay.com](http://glasgowcentralquay.com)

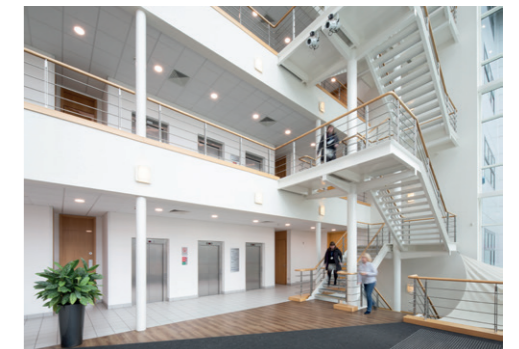




## 2 Central Quay

2 Central Quay is an 80,000 sq ft high quality office building occupying a prominent position at the gateway to Glasgow City Centre. The building is extremely well situated with easy access to both the city centre and vibrant West End.

The location benefits from excellent transport connectivity being minutes from Junctions 18 & 19 of the M8 motorway, in addition to being within a short distance to Anderston Railway Station and Anderston Quay bus terminal.





## Specification

- Large open plan floor plates
- New raised access floor
- New suspended ceiling with recessed LED lighting
- Refurbished male and female toilets on each floor
- Air-conditioning
- 95 car parking spaces (1:326 sq ft)
- 37 cycle racks
- 3 x passenger lifts
- On-site café
- Fully DDA compliant
- EPC Rating – C

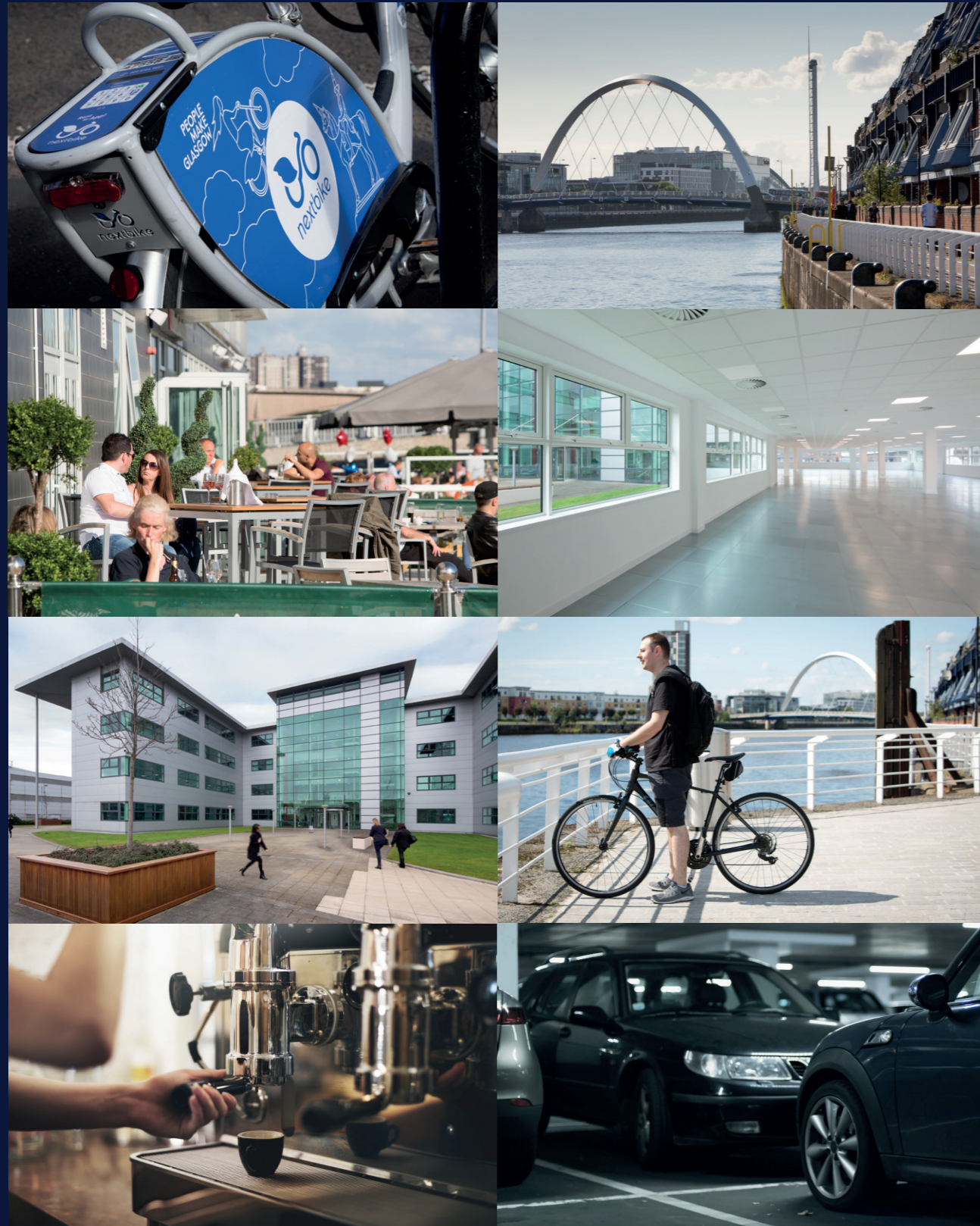
## Accommodation

FLOORS	SIZE (SQ FT)
First	19,910
Ground	11,067
TOTAL	30,977





# Space Planning



## First Floor

Occupancy Ratio 1:8

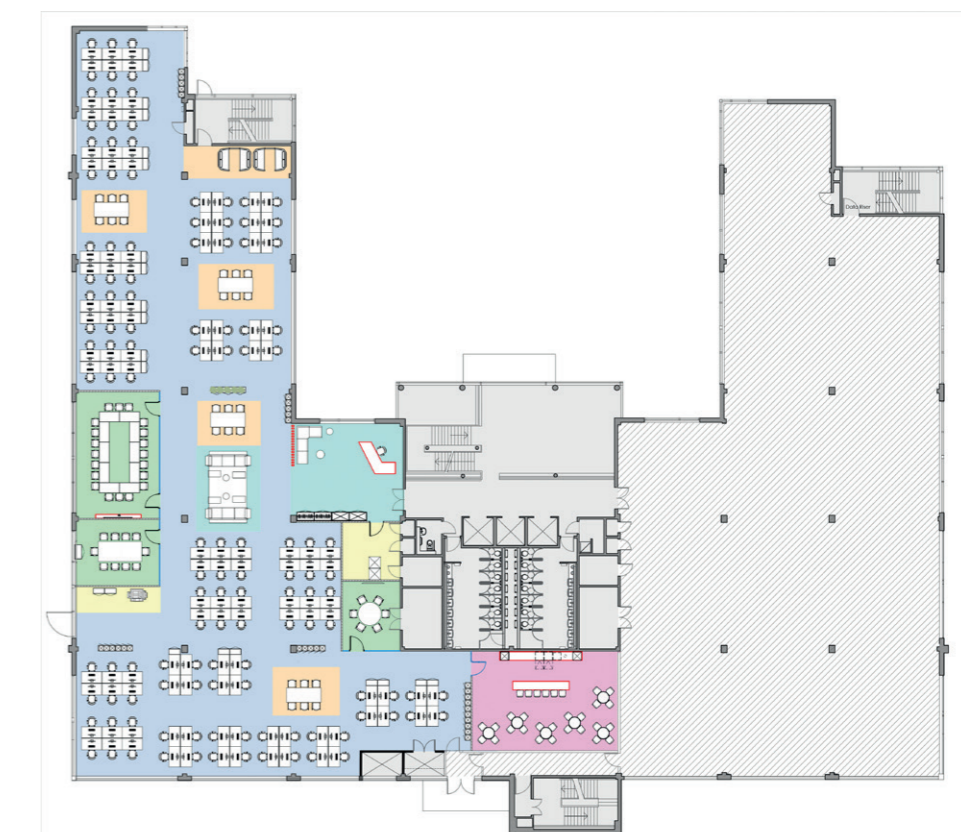
Workstations	x 230
Boardroom (20 person)	x 1
Meeting Room (10 person)	x 2
Meeting Room (6 person)	x 1
Meeting Room (4 person)	x 1
Hot Office / Focus Room	x 2
Reception	x 1
Lounge / Guest Zone	x 1
Touch Down Tables	x 4
Meeting Pods	x 6
Comms Room	x 1
Print Room	x 2
Tea Point	x 3
Breakout / Cafe area	x 1



## Ground Floor

Occupancy Ratio 1:8

Workstations	x 124
Boardroom (20 person)	x 1
Meeting Room (10 person)	x 1
Meeting Room (6 person)	x 1
Meeting Room (4 person)	x 1
Reception	x 1
Lounge / Guest Zone	x 1
Touch Down Tables / Guest Zone	x 2
Meeting Pods	x 5
Collaboration Tables	x 3
Comms Room	x 1
Print Room	x 1
Tea Point	x 1
Breakout / Cafe area	x 1
Lockers	x124





# Current Masterplan



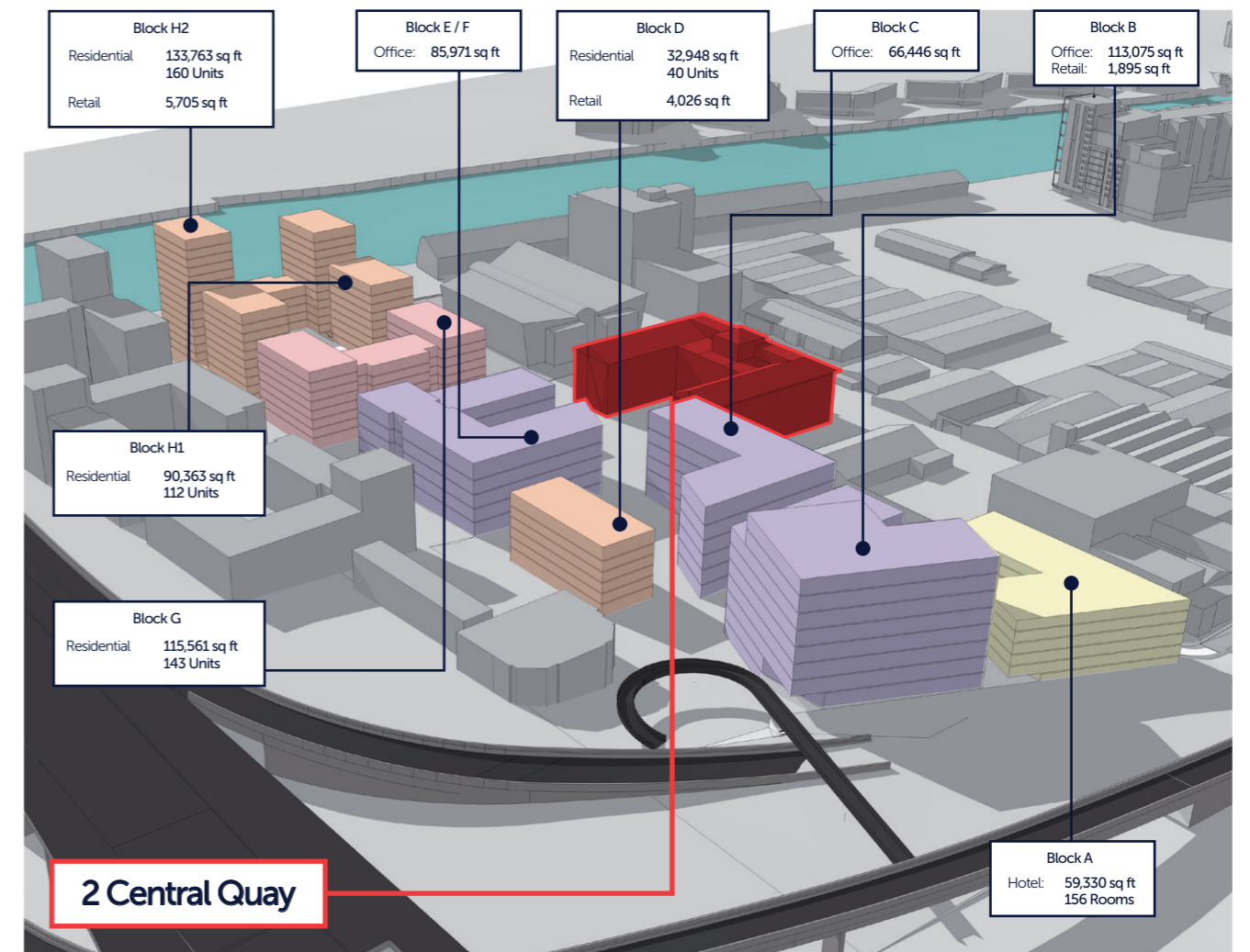
View of proposed Block A Hotel and Block B Office



View of proposed Platform PRS Development incorporating Blocks H1, H2 and G



Night view of proposed Platform PRS Development



Consented Masterplan - 400,000 sq ft mixed used development incorporating Offices, Residential and Hotel




# The Area



- 1 2 Central Quay
- 2 Scottish Daily Record & Sunday Mail
- 3 Premier Store
- 4 India Quay
- 5 Hilton Garden Inn
- 6 Radisson Red
- 7 Rotunda Bar and Diner - La Rotunda, Yen, Bar & Diner
- 8 Campanile Hotel
- 9 Nuffield Health Fitness / Wellbeing Gym
- 10 The SSE Hydro

- 11 Scottish Event Campus
- 12 Two Fat Ladies at The Buttery
- 13 Coffee Republic
- 14 Dakota Hotel
- 15 Hilton Glasgow
- 16 The Gym
- 17 Marriott Hotel
- 18 Hallmark Hotel

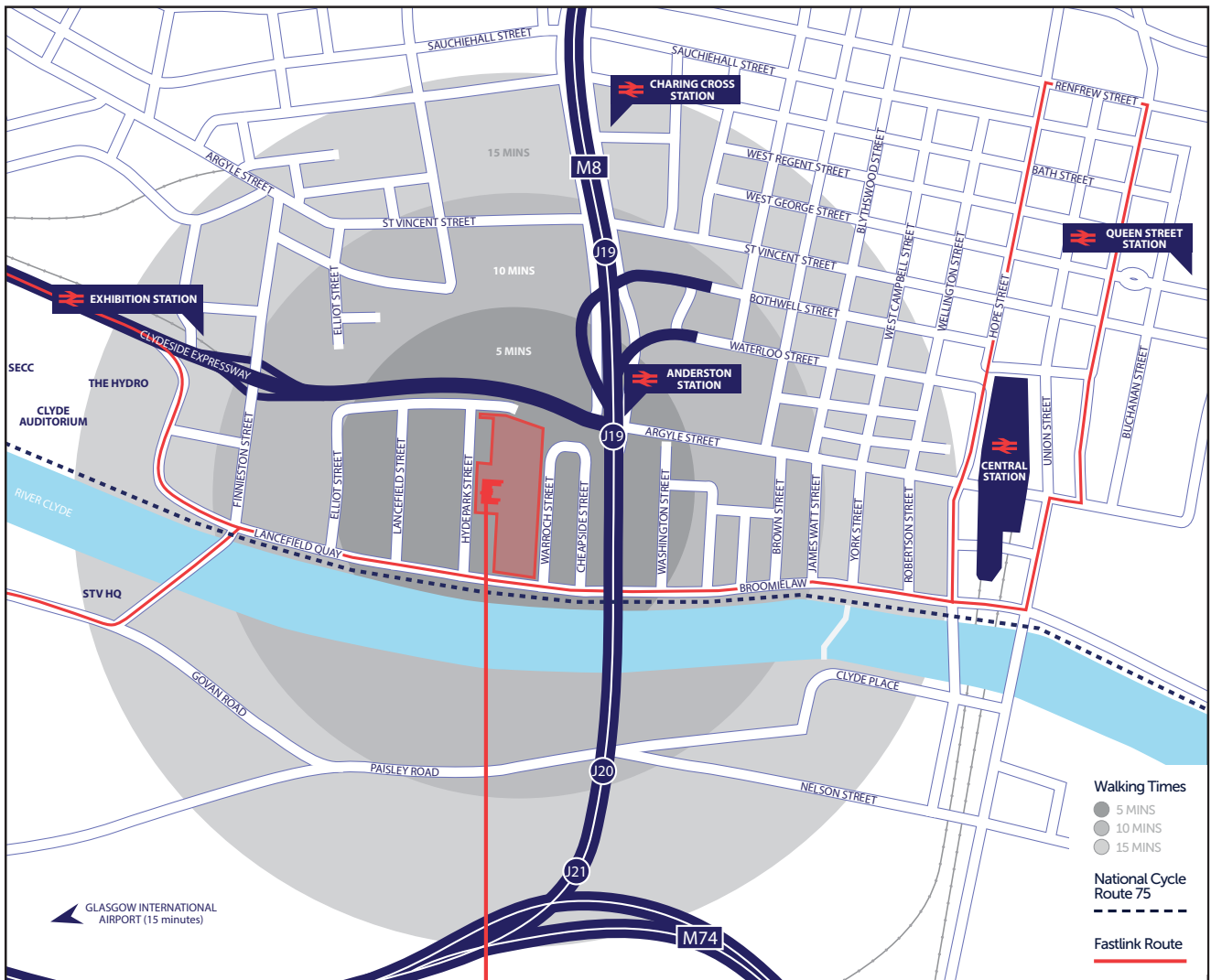
## Travel Times

	Closest Fastlink Bus Stop	1 min
	Anderston Railway Station Hydro Arena Glasgow Central Railway Station	4 mins 10 mins 15 mins
	Junction 19, M8 motorway (by car) Junction 1, M74 Motorway (by car) Charing Cross (by car) Glasgow International Airport (by car)	2 mins 5 mins 7 mins 13 mins





# Location



## Central Quay

G3 8BW

### LEASE TERMS

The accommodation is available to lease on new Full Repairing and Insuring lease terms.

### VIEWING

For further information please contact the joint agents:

**CBRE**

0141 204 7666

[www.cbre.co.uk](http://www.cbre.co.uk)

**AVISON  
YOUNG**

0141 300 8000

[avisonyoung.co.uk](http://avisonyoung.co.uk)

MISREPRESENTATION ACT 1967. Avison Young, CBRE and their clients, give notice that: (i) These particulars do not form part of any offer or contract and must not be relied upon as statements or representations of fact. (ii) No person in the employment of the agent(s) has any authority to make or give any representation or warranty whatever in relation to this property. (iii) Floor areas, measurements or distances given are approximate. Unless otherwise stated, any rents, or outgoings quoted are exclusive of VAT. (iv) Any descriptions given of the property cannot be taken to imply, it is in good repair, has all necessary consents, is free of contamination, or that the services and facilities are in working order. Interested parties are advised to carry out their own investigations as required. Plans and maps are for indicative purposes only. Publication date: May 2019.