

# HoldenCopley

PREPARE TO BE MOVED

Emperors Way, Hucknall, Nottinghamshire NG15 8GP

---

**£675,000**

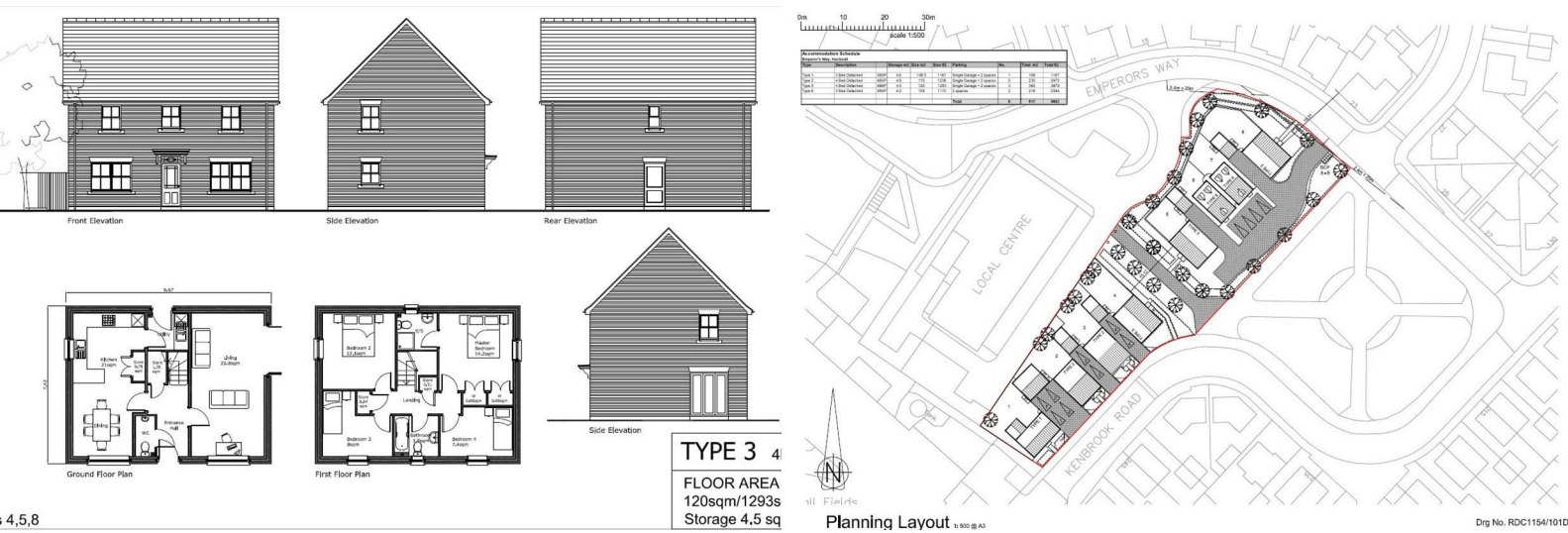
Emperors Way, Hucknall, Nottinghamshire NG15 8GQ



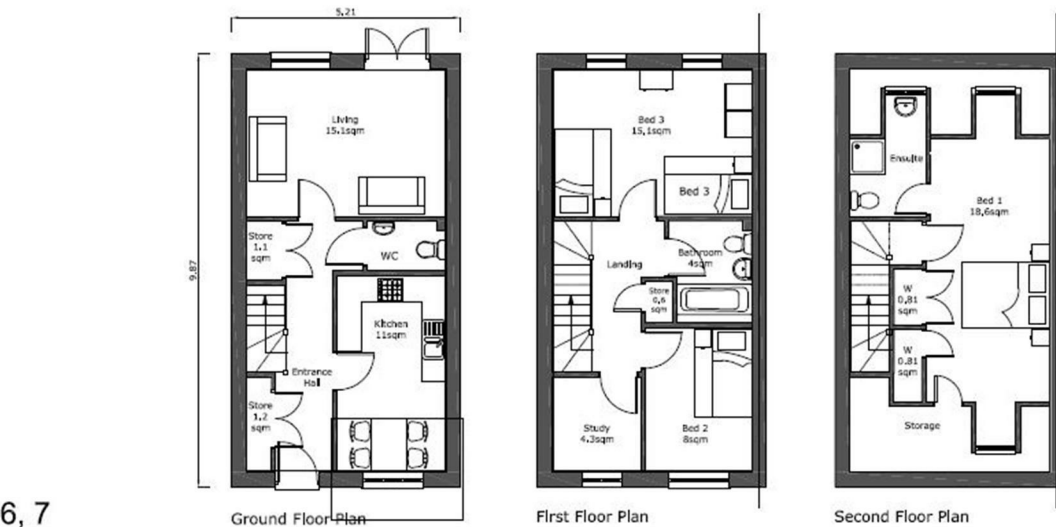
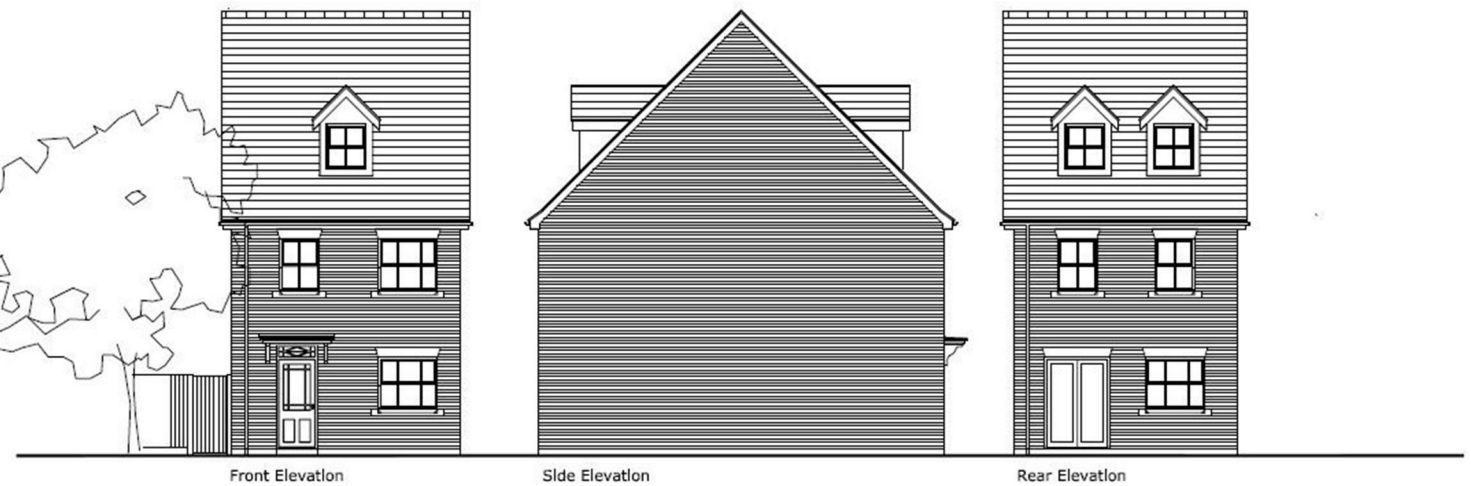
## FANTASTIC INVESTMENT OPPORTUNITY...

This prime plot of land presents an exceptional investment opportunity, with plans already drawn up and approved for the construction of eight dwellings, via the ref: V/2021/0866 - Ashfield District Council. Situated in a highly desirable location within Hucknall, the site offers easy access to local amenities, top-rated schools, and excellent transport links. As part of the larger Papplewick Lane development, which was granted outline planning permission in 2005 for residential development, a primary school, community facilities, open spaces, and sports pitches, this plot is positioned within a growing, vibrant community. The proposed development includes eight high-quality homes, complete with convenient access, ample car parking, and beautifully designed landscaping, providing a fantastic opportunity for developers looking to invest in an area with strong growth potential. To learn more about this exciting project, please contact our office for further details.

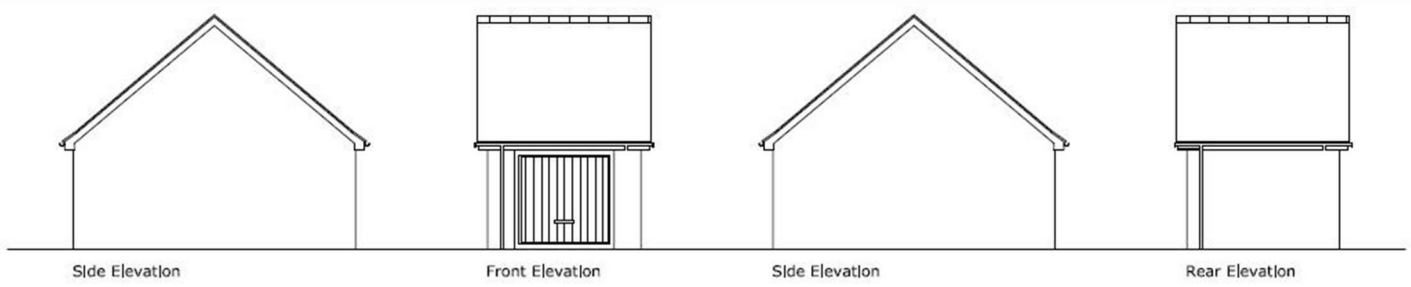
## MUST BE VIEWED



4, 5, 8



6, 7

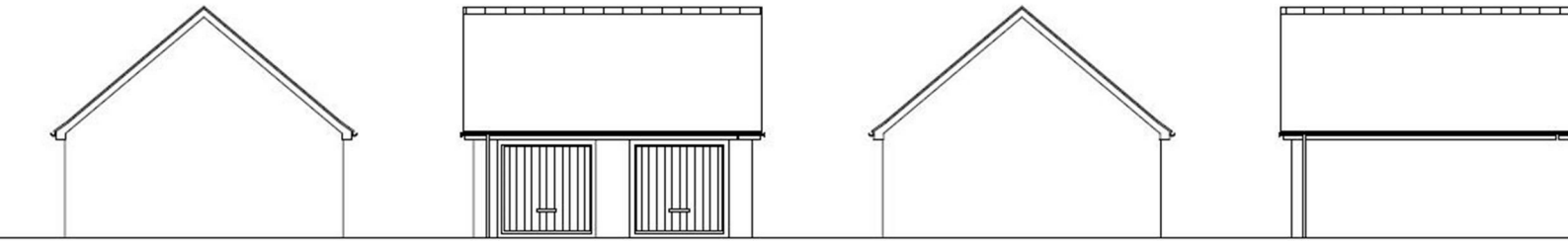


Side Elevation

Front Elevation

Side Elevation

Rear Elevation

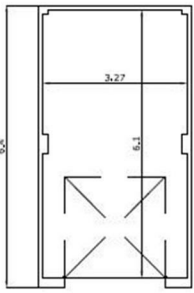


Side Elevation

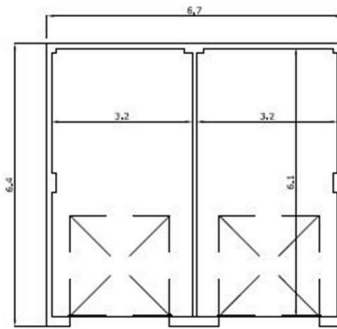
Front Elevation

Side Elevation

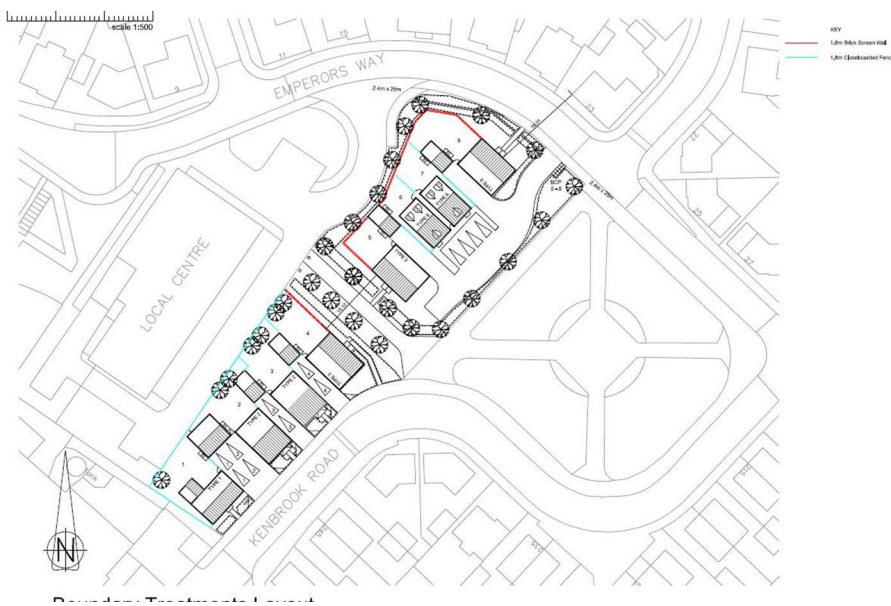
Rear Elevation



SG-Single Garage



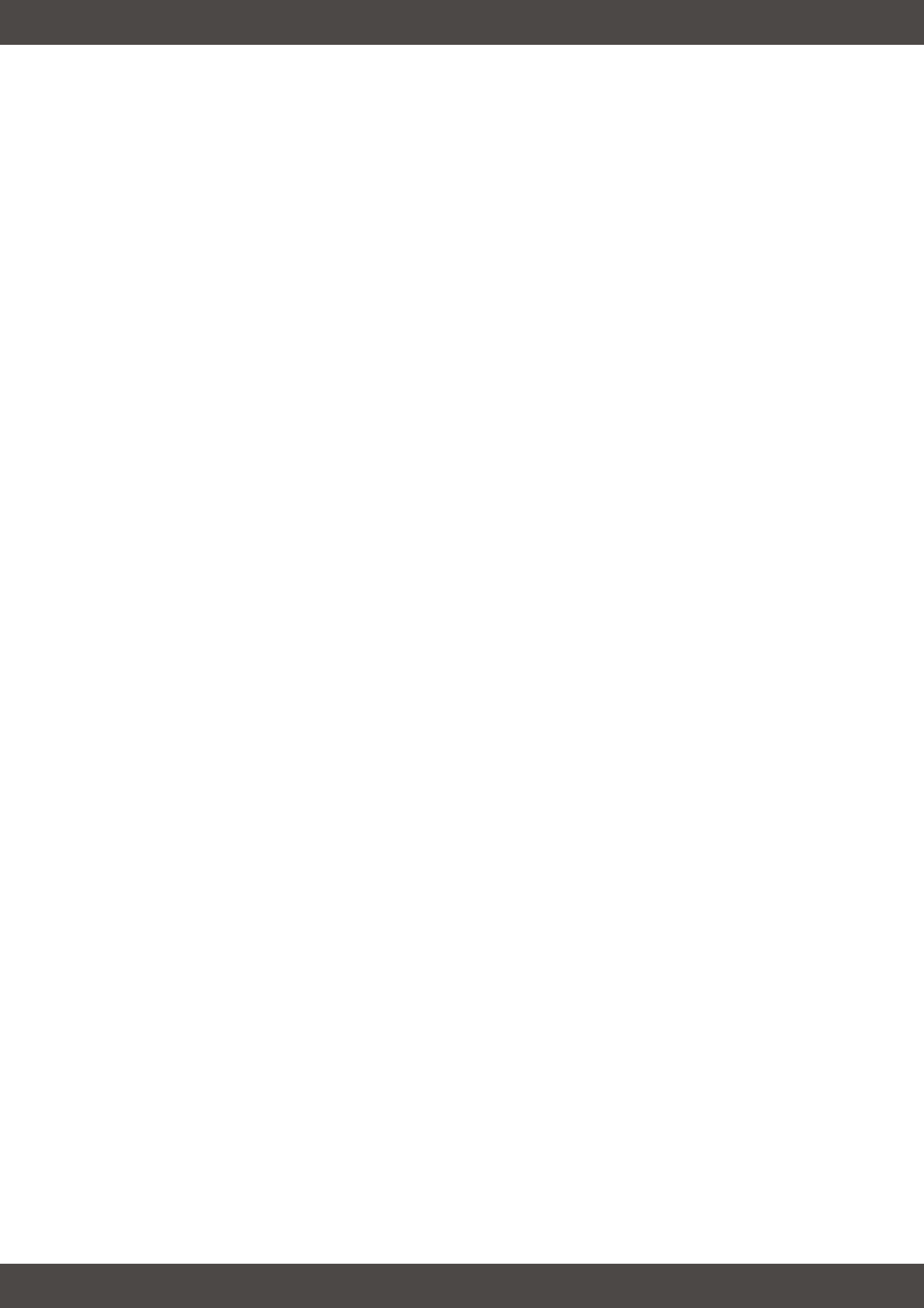
DG-Double Garage



- Prime Plot Of Land For Sale
- Planning Approved For 8 Dwellings - V/2021/0866
- Ideal Investment Opportunity
- Strong Growth Potential
- Part Of The Wider Papplewick Development, Enhancing Community Appeal
- Plans Include Associated Access, Car-Parking & Attractive Landscaping
- Sought-After Location
- Excellent Transport & Commuting Links
- Contact Office For More Information
- Must Be Viewed







Emperors Way, Hucknall, Nottinghamshire NG15 8GP

**01156 972 972**

**33A High Street, Hucknall, Nottingham, NG15 7HJ**

**[hucknalloffice@holdencopley.co.uk](mailto:hucknalloffice@holdencopley.co.uk)**

**[www.holdencopley.co.uk](http://www.holdencopley.co.uk)**

Agents Disclaimer: HoldenCopley, their clients and employees 1: Are not authorised to make or give any representations or warranties in relation to the property either here or elsewhere, either on their own behalf or on behalf of their client or otherwise. They assume no responsibility for any statement that may be made in these particulars. These particulars do not form part of any offer or contract and must not be relied upon as statements or representations of fact. 2: Any areas, measurements or distances are approximate. The text, photographs and plans are for guidance only and are not necessarily comprehensive. It should not be assumed that the property has all necessary planning, building regulation or other consents and HoldenCopley have not tested any services, equipment or facilities. Purchasers must make further investigations and inspections before entering into any agreement.