



## 17, Beechcroft Avenue, NW11

Located just minutes from Golders Green Station, both Golders Green & Temple Fortune High streets and plenty of local schools and places of worship, Oakview Lodge offers a selection of stunning brand newly fully refurbished apartments to rent.

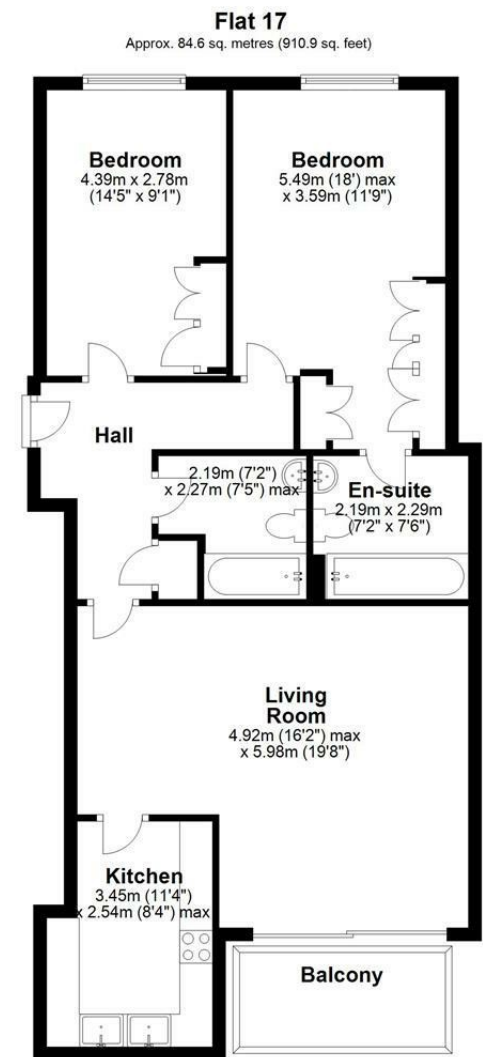
This 910 sq ft penthouse apartment offers 2 double bedrooms, 2 bathrooms (one en suite), fully fitted Kosher Kitchen and a large living room which offers direct access to a private balcony.

All apartments are allocated one space in the secure car park and access to the communal gardens.

Available April 2025

Furnished options available, to be discussed

**£620 Per Week**



Total area: approx. 84.6 sq. metres (910.9 sq. feet)

While every effort is made to ensure the accuracy of this plan, all measurements are approximate and no responsibility can be taken for any errors.  
Plan produced using PlanUp.

