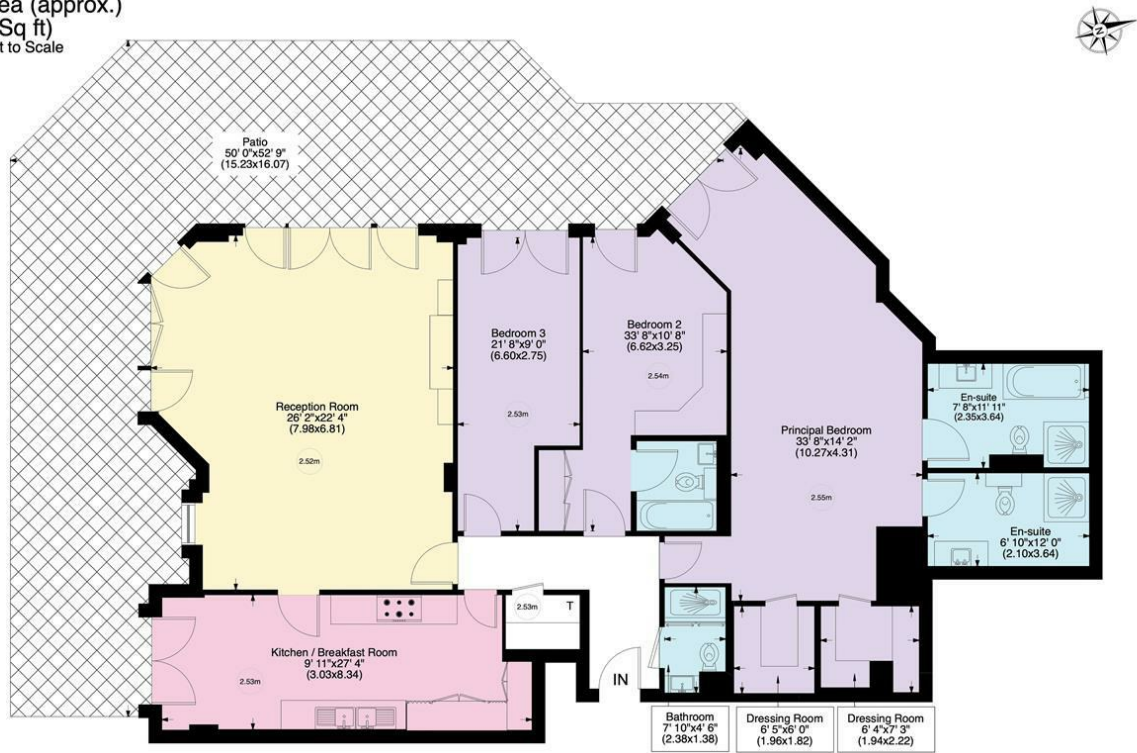


Hodford Road NW11 8NL

Gross internal area (approx.)
201 Sq m (2159 Sq ft)
For identification only, Not to Scale



Ground Floor

www.WilliamSalisbury.Photography

Not to Scale, for guidance only and must not be relied upon as a statement to fact. All measurements areas are approximate only (and have been prepared in accordance with the current edition of the RICS Code of Measuring Practice).



West Heath Place, 1B Hodford Road NW11

Available Soon: A stunning & highly desirable 3 bedroom, 3 bathroom garden floor apartment situated in this established block on the corner of The Finchley Road & Hodford Road.

West Heath Place offers luxury living with its 24 hr concierge & security, underground parking, lift to all floors, well manicured communal gardens, hotel style lobby & resident's gym. The development is situated close to Golders Green Tube Station and to the shopping centres of Hampstead & Temple Fortune.

The apartment spans 2,160 sq ft and offers a fabulous wide, south-west facing terrace with views over and direct access to the beautifully manicured communal garden. The accommodation comprises 22' x 26' reception room, dining room, kitchen/diner, utility room, beautifully appointed master bedroom with x2 dressing room & x2 his/her en-suite bathrooms, two further bedrooms (one with en-suite), underfloor heating, comfort cooling, two underground parking spaces & a storage room.

Contact us to arrange your viewing.

THREE BEDROOMS; MASTER BEDROOM WITH HIS / HER BATHROOMS AND DRESSING ROOMS; GENEROUS RECEPTION ROOM WITH LARGE SOUTH-FACING TERRACE WITH VIEWS OVER COMMUNAL GARDEN AS WELL AS DIRECT ACCESS; EAT-IN KITCHEN; SEPARATE DINING ROOM; THREE BATHROOMS; UTILITY ROOM; 2 UNDERGROUND PARKING SPACES; STORAGE ROOM; RESIDENT'S GYM; HOTEL-STYLE 24 HOUR CONCIERGE/SECURITY; COMMUNAL GARDENS

SOLE AGENT

£2,395,000

