



glentree
RENTALS

020 8209 1144
www.glentree.com

Kinloss Gardens, London, N3
Approximate Gross Internal Floor Area = 311.0 sq m / 3348 sq ft

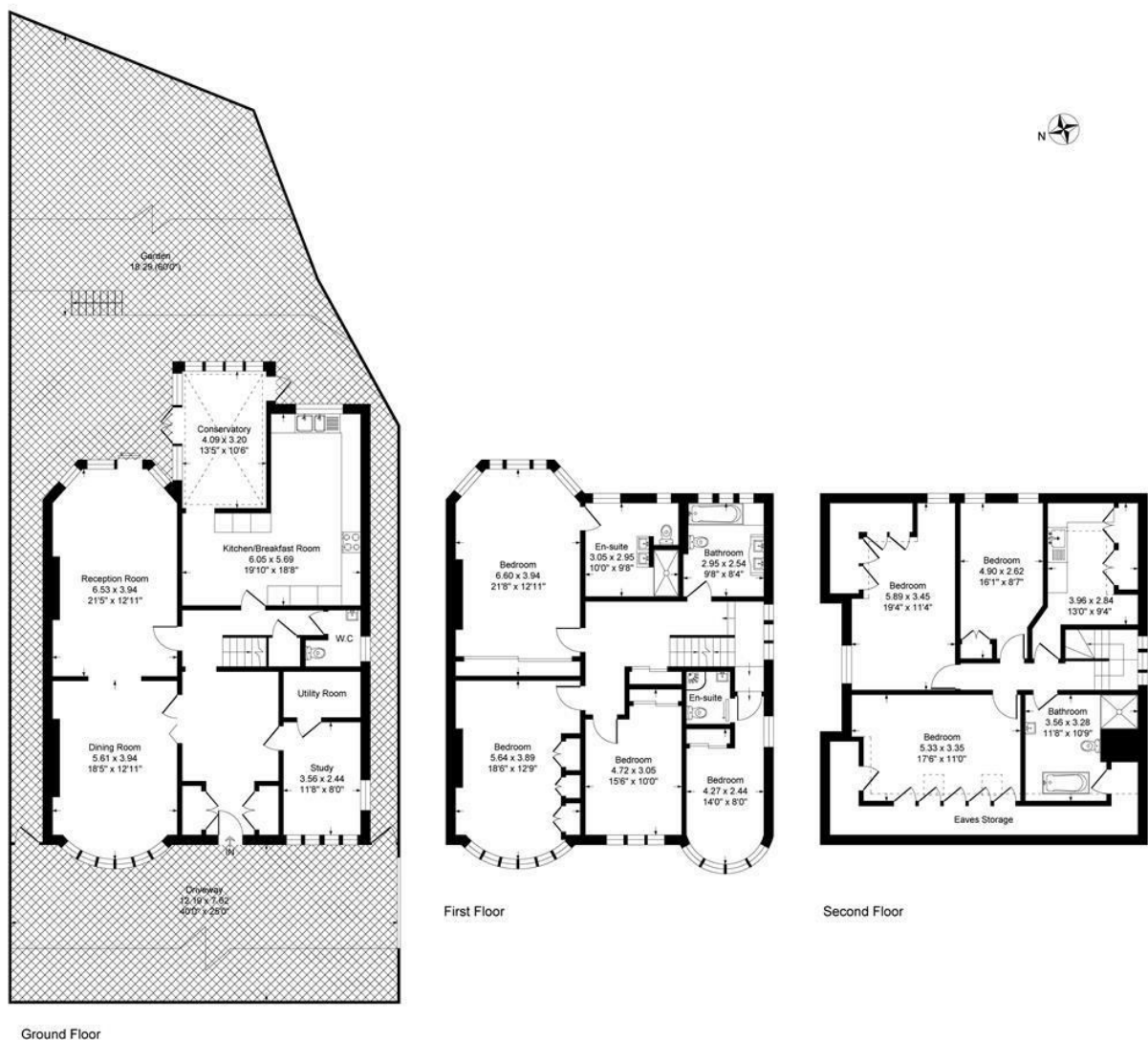


Illustration for identification purposes only, measurements are approximate, not to scale.



Kinloss Gardens, N3

This spacious 3,348 sq. ft. detached home on Kinloss Gardens, N3, offers seven well-proportioned bedrooms and four modern bathrooms. With a large driveway and private garden, while the expansive through-lounge diner is ideal for family gatherings and entertaining. The home also includes a bright, eat-in kitchen with plenty of space for casual dining. Located within the sought-after catchment area for excellent local schools, this property is perfect for growing families. Combining comfort, convenience, and ample space, this residence provides a fantastic opportunity to enjoy quality family living in a prime location.

Available now

Long Let
Deposit 6 weeks rent
EPC Rating C
Barnet Council Band G

£1,292 Per Week



RENTALS 020 8209 1144 E rentals@glentree.com
SALES 020 8458 7311 E sales@glentree.com
FAX 020 8209 0307 W www.glentree.com

Glentree Estates Ltd
698 Finchley Road
London NW11 7NE



Energy Efficiency Rating		Current	Potential
Very energy efficient - lower running costs			
(92 plus) A			
(81-91) B			
(69-80) C			
(55-68) D			
(39-54) E			
(21-38) F			
(1-20) G			
Not energy efficient - higher running costs			
England & Wales		EU Directive 2002/91/EC	

Environmental Impact (CO ₂) Rating		Current	Potential
Very environmentally friendly - lower CO ₂ emissions			
(92 plus) A			
(81-91) B			
(69-80) C			
(55-68) D			
(39-54) E			
(21-38) F			
(1-20) G			
Not environmentally friendly - higher CO ₂ emissions			
England & Wales		EU Directive 2002/91/EC	

