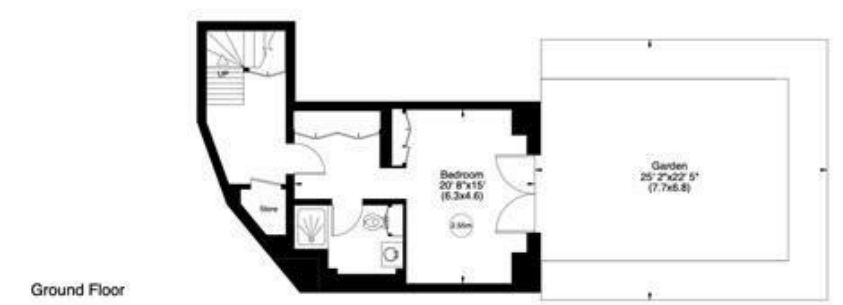


**Hazel Court, Bishops Avenue, N2**  
Gross internal area (approx.)  
222 Sq m (2390 Sq ft)  
For identification only. Not to Scale



First Floor



Ground Floor

[www.virtualtours.london](http://www.virtualtours.london)  
Not to scale, for guidance only and must not be relied upon as a statement of fact. All measurements and areas are approximate only (and have been prepared in accordance with the current edition of the RICS Code of Measuring Practice).



## Hazel Court 49, The Bishops Avenue N2

A luxurious, elegant and spacious, three bedroom apartment on the Ground and First Floors of this recent gated development is available in one of the most prestigious addresses in London.

This apartment offers 2,390 sq ft of generous living space with 32"9 reception room and a separate eat-in kitchen with Gaggenau appliances. The flat is fully air conditioned & there is almost 3,000 sq ft of private garden and terrace on both levels. The apartment has been kept to an immaculate standard and provide 2 underground parking spaces and a generous storage room in the basement.

The three buildings are tied into the walled garden and enjoy both private and public spaces. The subterranean car park and leisure facility are located below the courtyard with direct secure lift access to all apartments. The grounds extend to two acres, with mature trees and shrubs and extensive landscaping.

A 24 hour concierge / security service is also available for residents' peace of mind and convenience.

KITCHEN WITH INFORMAL DINING; LARGE RECEPTION FOR LIVING/DINING; MASTER BEDROOM WITH ENSUITE AND DRESSING ROOM; SECOND BEDROOM WITH ENSUITE AND DRESSING ROOM; THIRD BEDROOM; GUEST BATHROOM; UTILITY ROOM; LARGE GARDEN; X2 TERRACES; 2 UNDERGROUND PARKING SPACES; HOTEL-STYLE CONCIERGE; STORAGE; SWIMMING POOL AND LEISURE; COMMUNAL GARDEN

**SOLE AGENT**

**£2,950,000**



NEW HOMES 020 8731 9500  
FAX 020 8209 0307

E [newhomes@glentree.com](mailto:newhomes@glentree.com)  
W [www.glentree.com](http://www.glentree.com)

Glentree Estates Ltd  
698 Finchley Road  
London NW11 7NE

