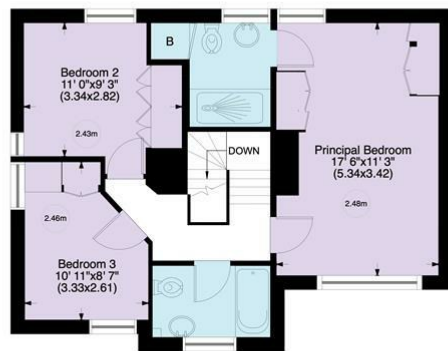




**Wildwood road NW11**  
Gross internal area (approx.)  
**134 Sq m (1438 Sq ft)**  
For identification only, Not to Scale



First Floor

[www.virtualtours.london](http://www.virtualtours.london)

Not to Scale, for guidance only and must not be relied upon as a statement to fact. All measurements areas are approximate only (and have been prepared in accordance with the current edition of the RICS Code of Measuring Practice).



**Wildwood Road, NW11**

A rarely available, 3 bedroom semi-detached cottage located on this highly desirable and well renowned road.

The property is directly facing the Heath extension and is ideal for a downsizer or a first-time buyer. Internally on the ground floor there is a drawing room, eat in kitchen, T.V family room and guest w.c.

The principal room offers an ensuite shower and there is a separate family bathroom. Additional benefits include off street parking for 2 cars and being within short distance of the amenities of Golders Green and Temple Fortune.

**DRAWING ROOM: KITCHEN/DINER: FAMILY ROOM: PRINCIPAL BEDROOM WITH EN SUITE: 2 FURTHER BEDROOMS: FAMILY BATHROOM: GUEST WC: REAR GARDEN: OFF-STREET PARKING**

**SOLE AGENT**

**£1,595,000**



SALES 020 8458 7311  
RENTALS 020 8209 1144  
FAX 020 8209 0307

E [sales@glentree.com](mailto:sales@glentree.com)  
E [rentals@glentree.com](mailto:rentals@glentree.com)  
W [www.glentree.com](http://www.glentree.com)

Glentree Estates Ltd  
698 Finchley Road  
London NW11 7NE

