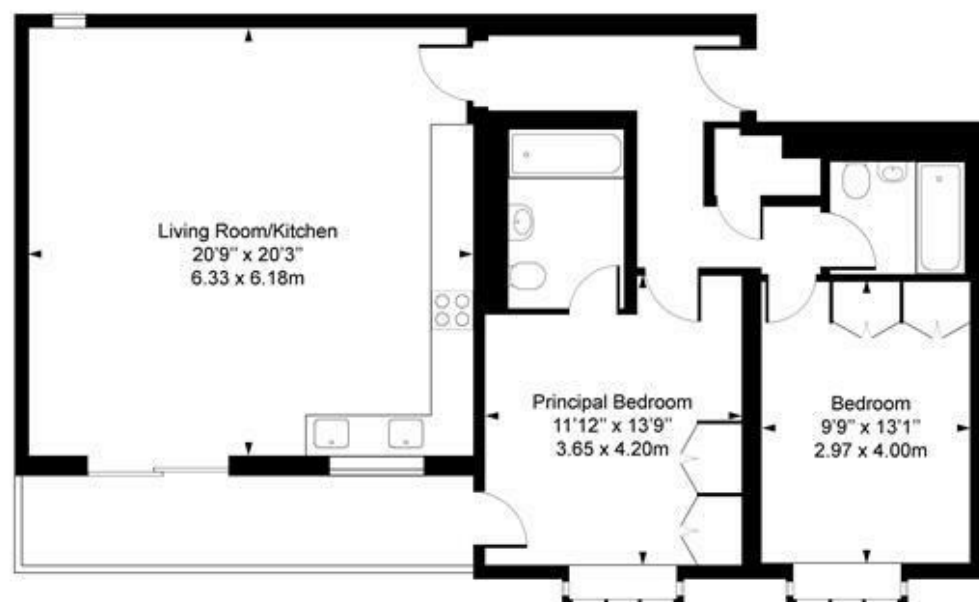


Beechcroft Avenue, NW11

Approx. Gross Internal Area 926.12 sq ft / 86.04 sq m



Second Floor

For Illustration Purposes Only - Not To Scale

This floor plan should be used as a general outline for guidance only and does not constitute in whole or in part an offer or contract. Any intending purchaser or lessee should satisfy themselves by inspection, search, enquiries and full survey as to the correctness of each statement. Any areas, measurements or distances quoted are approximate and should not be used to value a property or be the basis of any sale or let.



Beechcroft Avenue, Golders Green NW11

Located just minutes from Golders Green Station both Golders Green & Temple Fortune High streets and plenty of local schools and places of worship, Oakview Lodge offers a selection of stunning brand newly fully refurbished apartments to rent.

This 926 sq ft 2nd floor apartment offers 2 double bedrooms, 2 bathrooms (both ensuite), a very large open plan living room and Kosher kitchen along with direct access to a private balcony.

This apartment comes with an allocated one space in the secure car park and access to the communal gardens.

Available June 2024

Furnished options available, to be discussed

£692 Per Week



Energy Efficiency Rating		Environmental Impact (CO ₂) Rating			
	Current	Potential		Current	Potential
Very energy efficient - lower running costs			Very environmentally friendly - lower CO ₂ emissions		
(92 plus) A			(92 plus) A		
(81-91) B			(81-91) B		
(69-80) C			(69-80) C		
(55-68) D			(55-68) D		
(39-54) E			(39-54) E		
(21-38) F			(21-38) F		
(1-20) G			(1-20) G		
Not energy efficient - higher running costs			Not environmentally friendly - higher CO ₂ emissions		
England & Wales	EU Directive 2002/91/EC		England & Wales	EU Directive 2002/91/EC	

