

LUXLEY

HOUSE

GOLDERS GREEN, LONDON





Sustainability without compromise.

An exclusive collection of nine luxury apartments, including four duplex flats and a stunning three bedroom penthouse, located close to the diverse amenities of Golders Green high street and only 400m from Basing Hill Park.

The first of it's kind in London, Luxley House boasts net zero carbon credentials utilising a 65m² green "living wall", solar panels, electric car (EV) charging points, state-of-the-art building materials, LED automated smart lighting, and air source heat pump systems.



Duplex 1, Bed 1 Wardrobe



Duplex 1, Bed 1 Ensuite



Duplex Apartments

These individually designed Duplex apartments are split over two floors, each containing three bedrooms and their own private 20- 40sqm italianate courtyard.

For added luxury, Duplex 1 & 2 boast bespoke designed wine rooms off the kitchen and double wardrobe areas in the principal bedrooms, while Duplex 3 & 4 come with their own private Woodstock Road entrance.

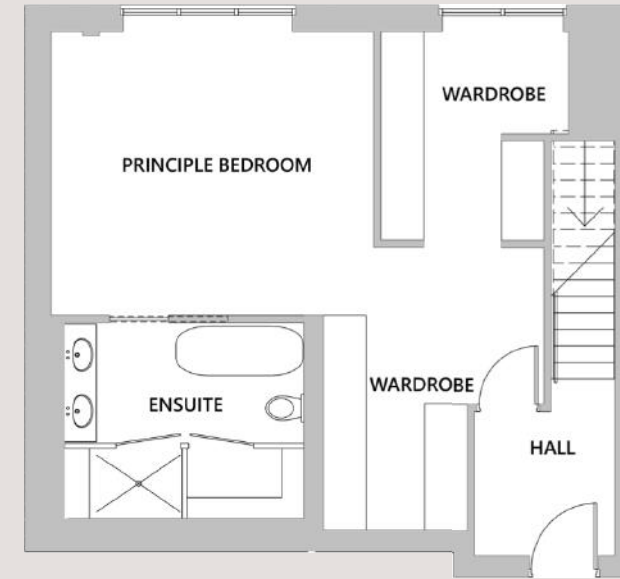


Duplex 1, Bed 1

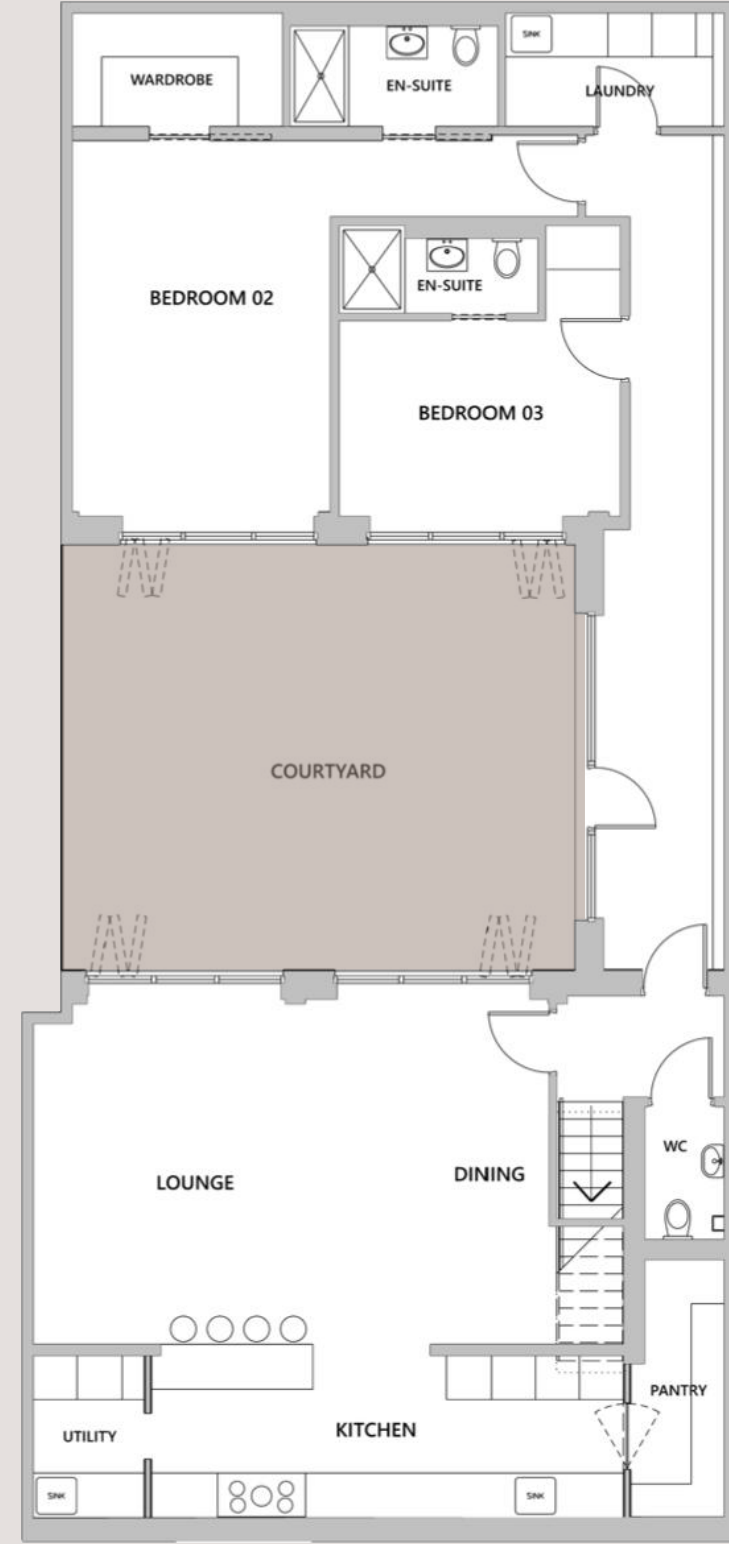
Duplex 1

3 bed, 3 bath

Lounge/Dining/Kitchen	49.6 m ²
Wine room (Pantry)	3.3 m ²
WC	1.9 m ²
Courtyard	40.8 m ²
Laundry	4.6 m ²
Principal Bedroom & Ensuite	45.5 m ²
Bedroom 2 & Ensuite	29.8 m ²
Bedroom 3 & Ensuite	18.5 m ²
Total area (exc. courtyard)	200 m²

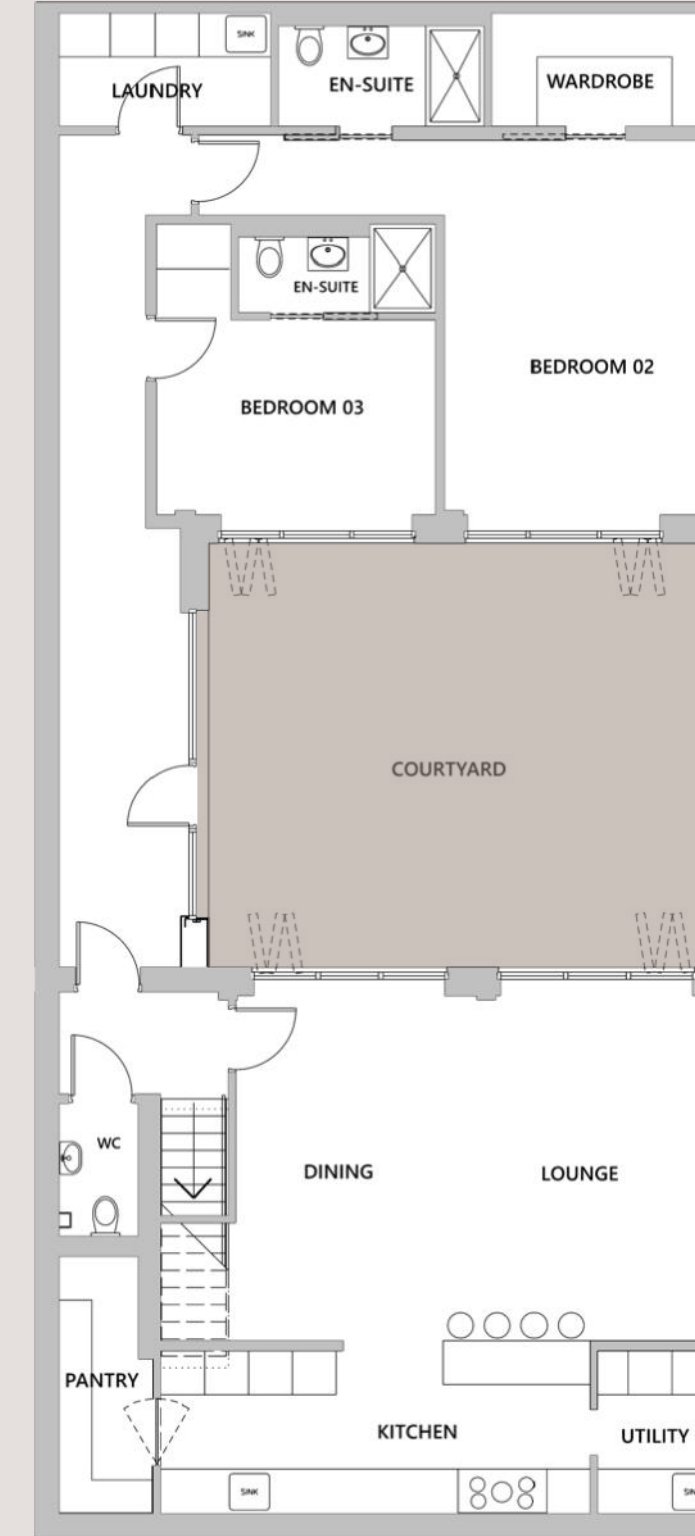


GROUND FLOOR



LOWER GROUND

Exact layout and sizes may vary.
Floor plans shown for Luxley House are for approximate measurements only.



LOWER GROUND

Exact layout and sizes may vary.
Floor plans shown for Luxley House are for approximate measurements only.



GROUND FLOOR

Duplex 2

3 bed, 3 bath

Lounge/Dining/Kitchen	49.63 m ²
Wine Room (Pantry)	3.32 m ²
WC	1.97 m ²
Courtyard	40.2 m ²
Laundry	4.62 m ²
Principal Bedroom & Ensuite	45.51 m ²
Bedroom 2 & Ensuite	29.75 m ²
Bedroom 3 & Ensuite	18.51 m ²
Total area (exc. courtyard)	196.3 m²

Exact layout and sizes may vary.
Floor plans shown for Luxley House are for approximate measurements only.



Duplex 2, Private Courtyard



Duplex 2, Living & Dining Room

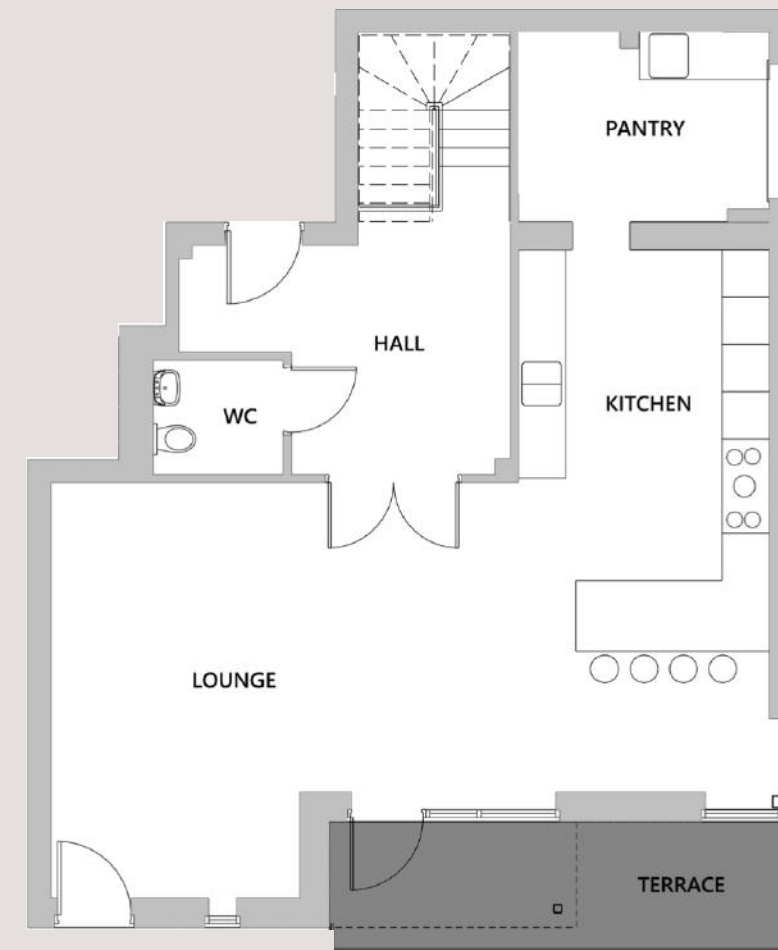
Duplex 3

3 bed, 3 bath

Lounge/Dining/Kitchen	49.5 m ²
Pantry	7.5 m ²
WC	2.4 m ²
Courtyard & Terrace	30.8 m ²
Laundry & Store	5.3 m ²
Principal Bedroom & Ensuite	28.2 m ²
Bedroom 2 & Ensuite	26.2 m ²
Bedroom 3 & Ensuite	16.8 m ²
Total area (exc. courtyard)	192.3 m²



LOWER GROUND



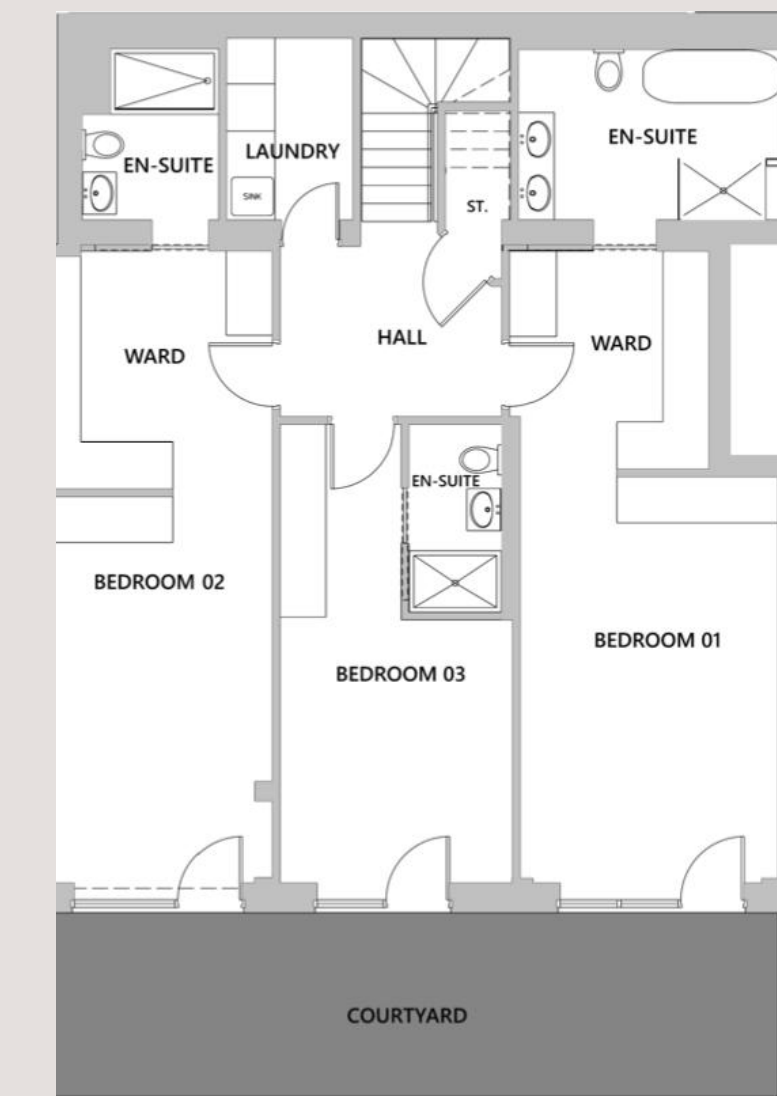
GROUND FLOOR

Exact layout and sizes may vary.
Floor plans shown for Luxley House are for approximate measurements only.

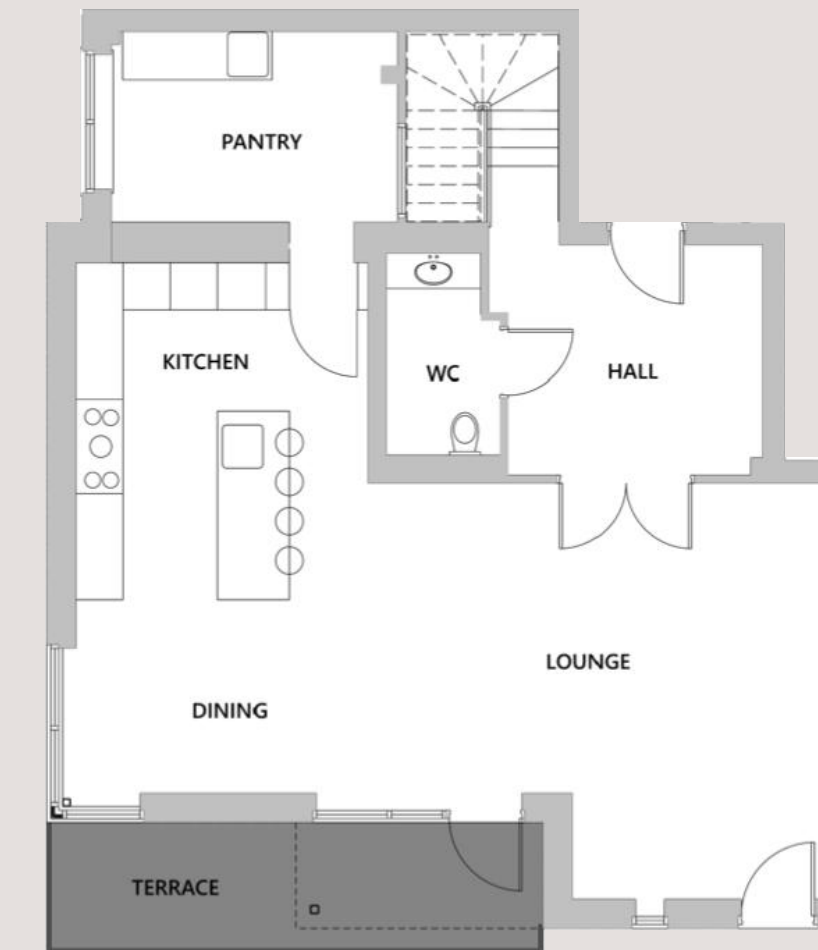
Duplex 4

3 bed, 3 bath

Lounge/Dining/Kitchen	52.7 m ²
Pantry	8.7 m ²
WC	3.49 m ²
Courtyard & Terrace	29.9 m ²
Laundry & Store	5.5 m ²
Principal Bedroom & Ensuite	32.8 m ²
Bedroom 2 & Ensuite	28.8 m ²
Bedroom 3 & Ensuite	20.9 m ²
Total area (exc. courtyard)	185.2 m²



LOWER GROUND



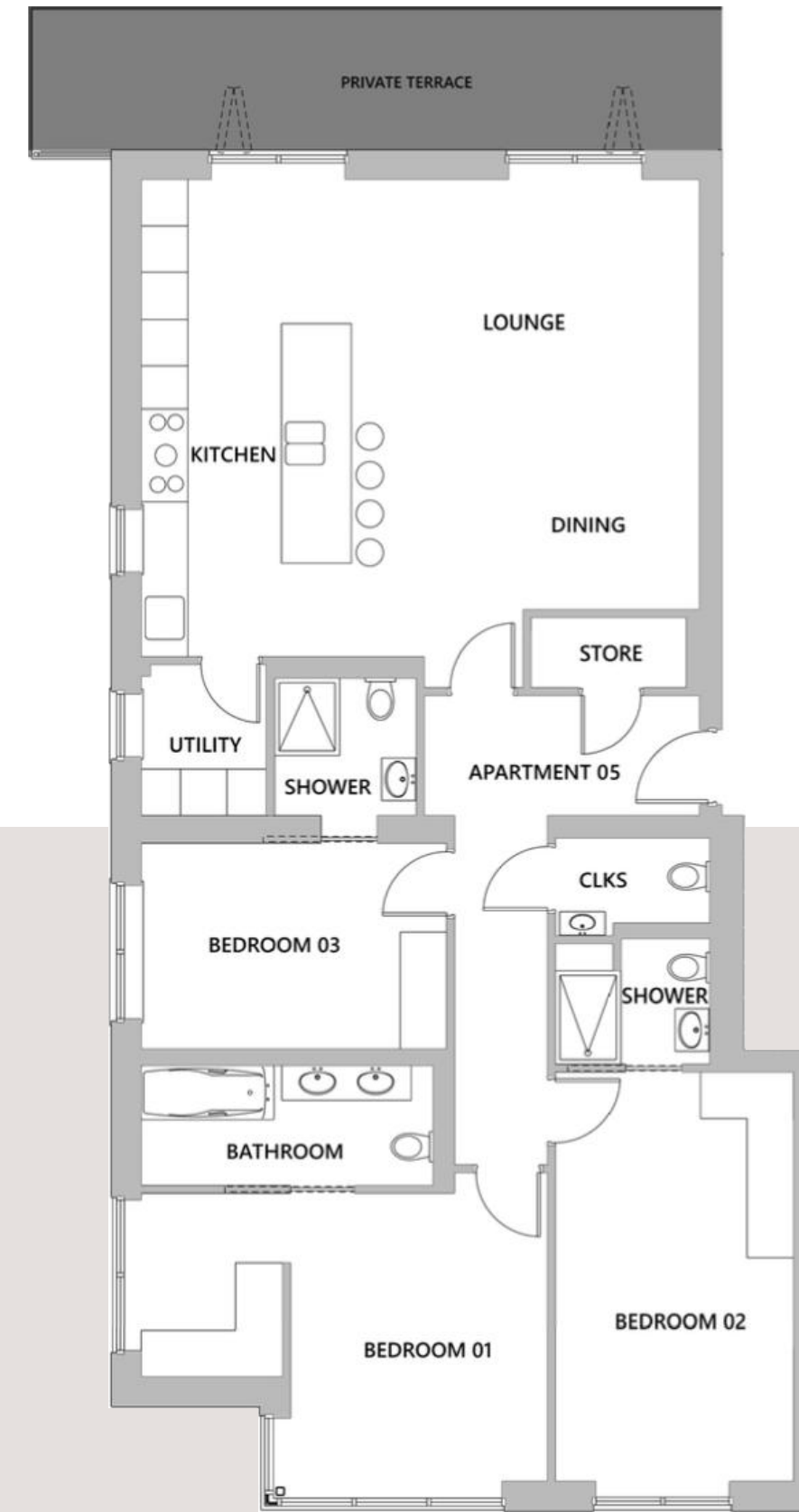
GROUND FLOOR

Exact layout and sizes may vary.
Floor plans shown for Luxley House are for approximate measurements only.

Apartment 5

3 bed, 3 bath

Lounge/Dining/Kitchen	43.3 m ²
Cloaks	2.3 m ²
Utility & Store	4.9 m ²
Terrace	17.0 m ²
Principal Bedroom & Ensuite	23.0 m ²
Bedroom 2 & Ensuite	19.3 m ²
Bedroom 3 & Ensuite	13.7 m ²
Total area (exc. terrace)	126.9 m²



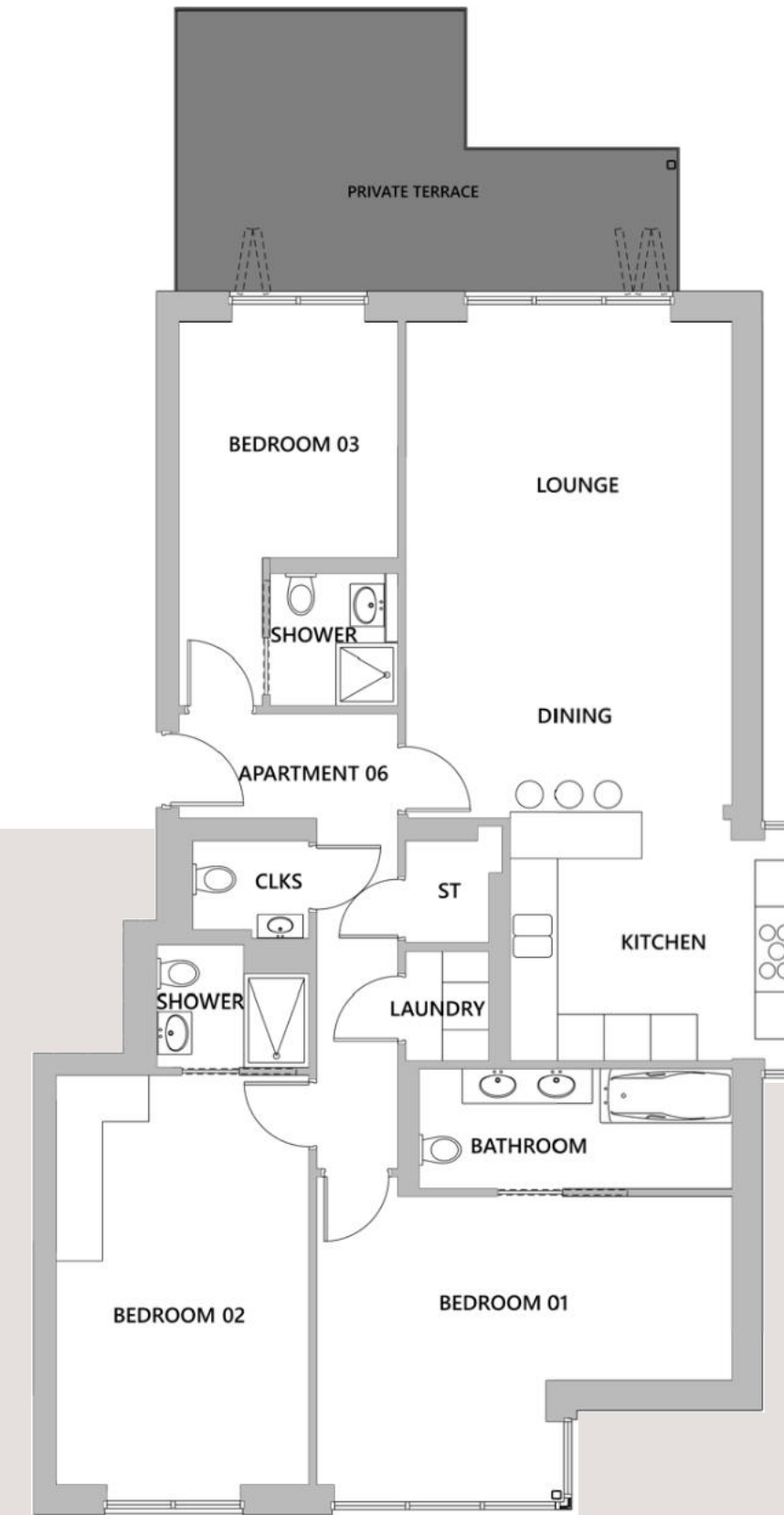
FIRST FLOOR

Exact layout and sizes may vary.
Floor plans shown for Luxley House are for approximate measurements only.

Apartment 6

3 bed, 3 bath

Lounge/Dining/Kitchen	38.3 m ²
Cloaks	1.8 m ²
Laundry & Store	3.1 m ²
Terrace	19.6 m ²
Principal Bedroom & Ensuite	23.2 m ²
Bedroom 2 & Ensuite	21.1 m ²
Bedroom 3 & Ensuite	13.4 m ²
Total area (exc. terrace)	117.1 m²



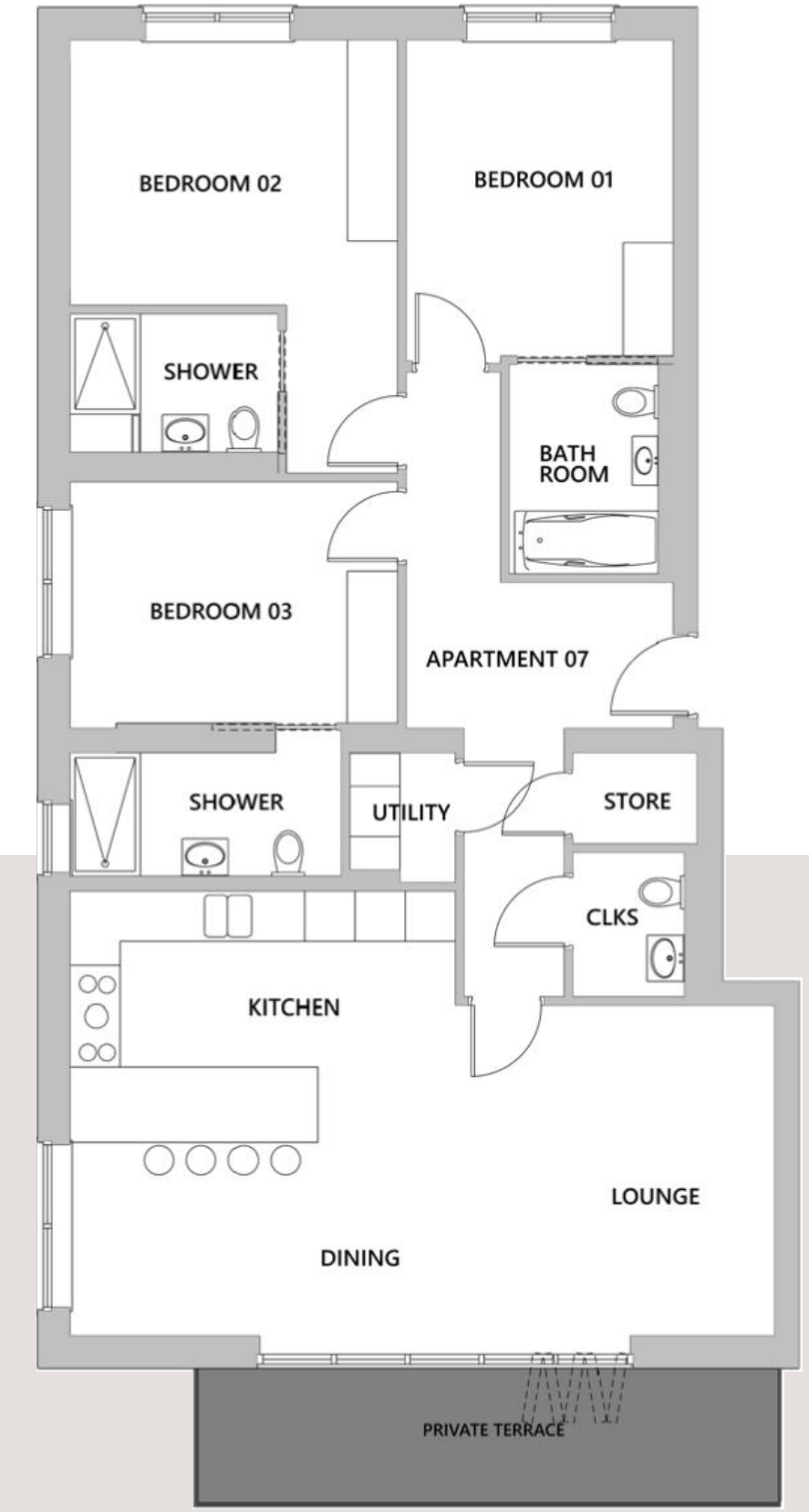
FIRST FLOOR

Exact layout and sizes may vary.
Floor plans shown for Luxley House are for approximate measurements only.

Apartment 7

3 bed, 3 bath

Lounge/Dining/Kitchen	39.3 m ²
Cloaks	2.3 m ²
Utility & Store	3.5 m ²
Terrace	11.2 m ²
Principal Bedroom & Ensuite	16.5 m ²
Bedroom 2 & Ensuite	19.0 m ²
Bedroom 3 & Ensuite	15.9 m ²
Total area (exc. terrace)	118 m²



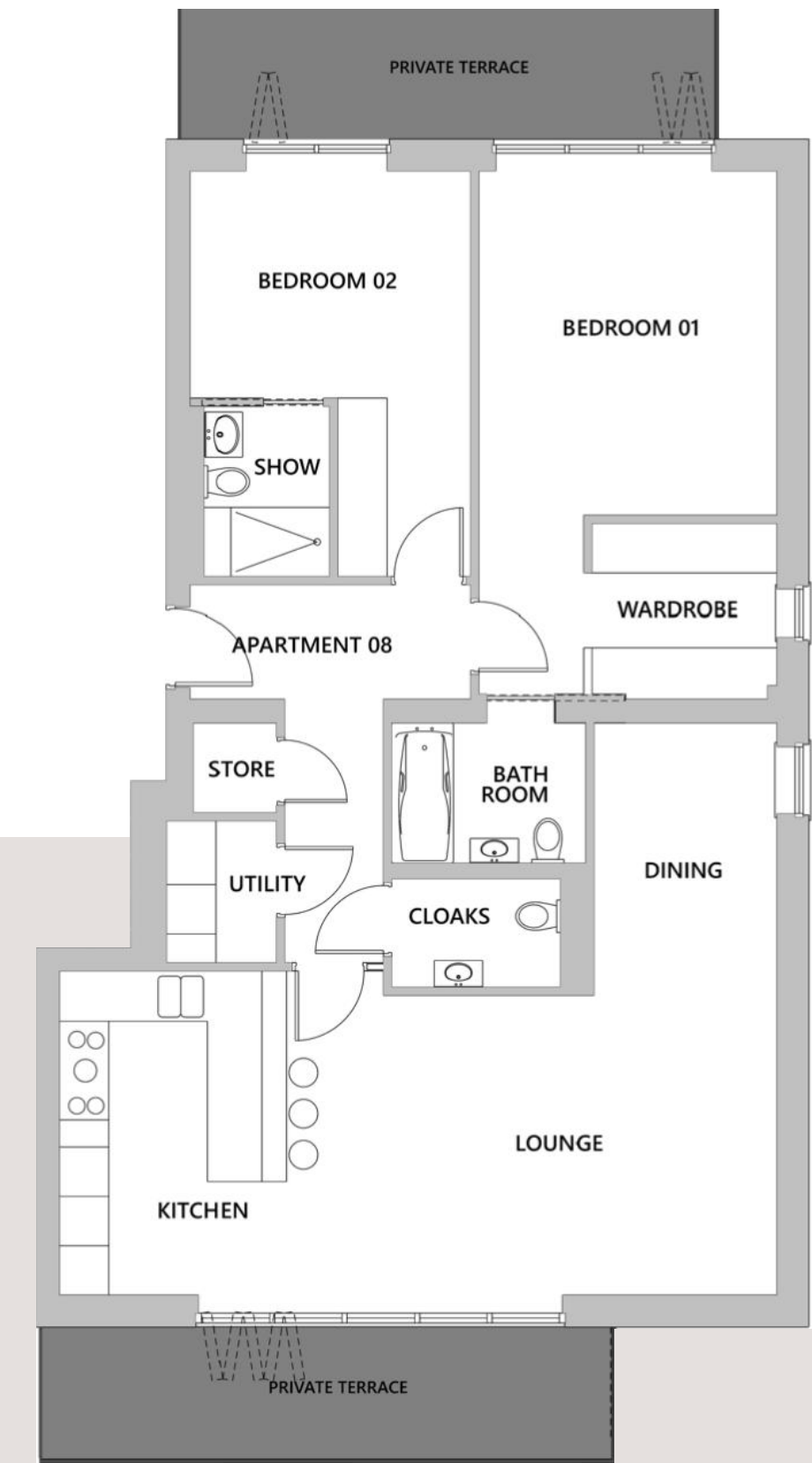
SECOND FLOOR

Exact layout and sizes may vary.
Floor plans shown for Luxley House are for approximate measurements only.

Apartment 8

2 bed, 2 bath

Lounge/Dining/Kitchen	40.2 m ²
Cloaks	2.7 m ²
Utility & Store	3.4 m ²
Terraces	25.8 m ²
Principal Bedroom & Ensuite	27.0 m ²
Bedroom 2 & Ensuite	16.0 m ²
Total area (exc. terrace)	105.9 m²



SECOND FLOOR

Exact layout and sizes may vary.
Floor plans shown for Luxley House are for approximate measurements only.



Penthouse, Bed 1 Wardrobe



Penthouse, Bed 1 Ensuite

Penthouse

This stunning three bedroom, three bathroom Penthouse apartment is situated on the third floor and is the crown jewel of Luxley House.

Containing a total of five private balcony terraces and boasting direct lift access into the apartment, the Penthouse offers the ultimate in luxury living with Italian & German designer brands fittings, bespoke LED lit cabinetry and panoramic views of the surrounding area.

carbon neutral
SUSTAINABLE DEVELOPMENT

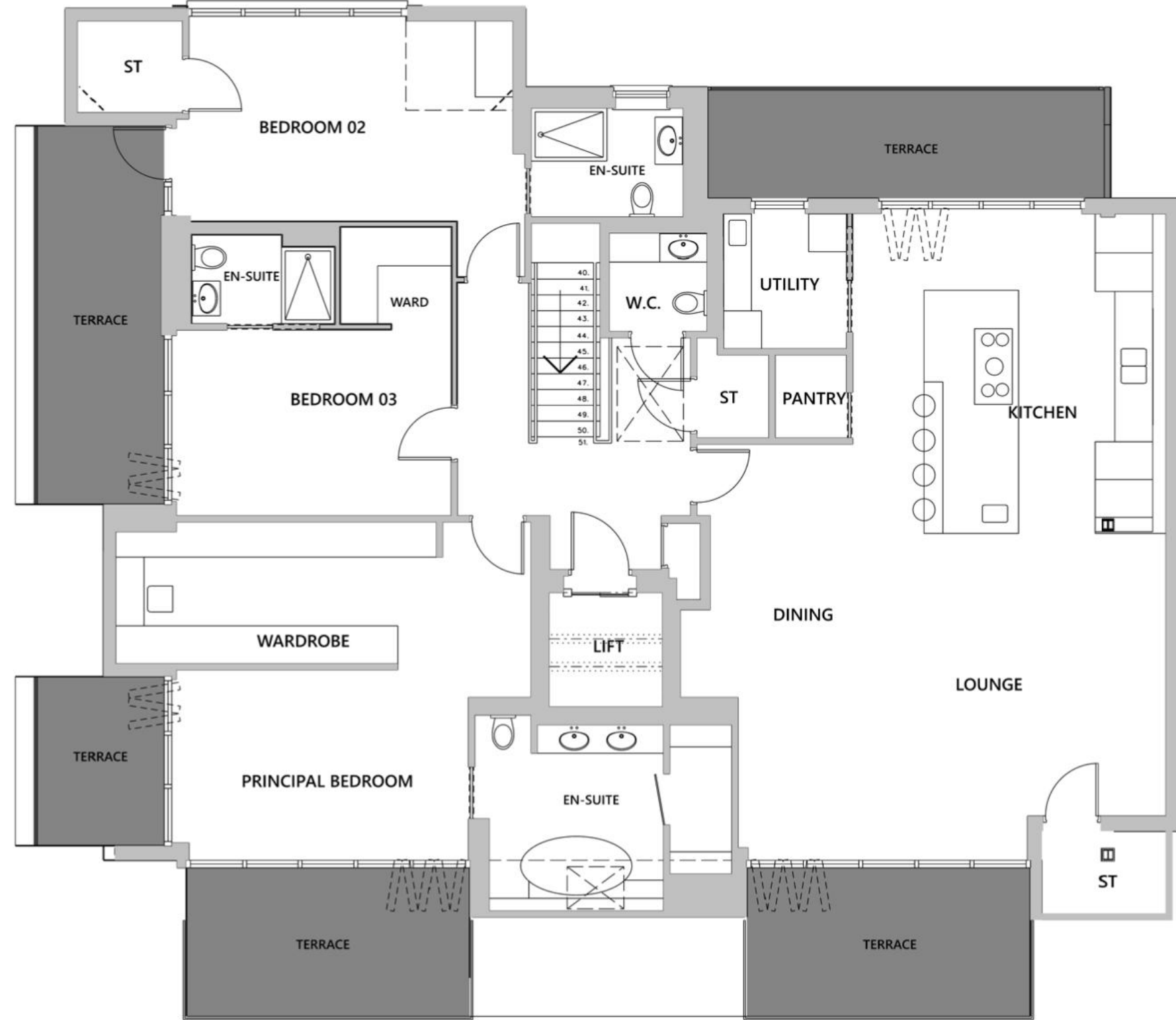


Penthouse, Kitchen

Penthouse

3 bed, 3 bath

Lounge/Dining/Kitchen/Pantry	64.23 m ²
Cloaks	2.4 m ²
Utility & Store	3.4 m ²
Terraces	46.0 m ²
Principal Bedroom & Ensuite	39.5 m ²
Bedroom 2 & Ensuite	40.5 m ²
Total area (exc. terrace)	191.0 m²



THIRD FLOOR



Penthouse, Bed 1



Internal Specification

General Finishes:

- Underfloor heating system throughout
- Open plan kitchen/living/dining
- Floor to ceiling bi-folding doors for bedroom and living area terraces
- Matt black Italian door furniture
- Bespoke 3-panel internal doors
- Sliding pocket doors for en-suites, utility & pantry rooms
- Veneered black front door with electronic Shabbat compliant locks

Electrical & Lighting:

- KNX Smart home lighting system with mobile phone control
- Electric rail curtains and voiles
- Wired for Virgin/BT/Sky+ in living area & bedrooms
- Recessed LED downlighters, strips and step lighters (3000k warm white)
- CAT6 wiring throughout
- Intercom door entry system
- Matt black USB-C plug sockets

Flooring & Tiles:

- Engineered oak wood herringbone
- Italian porcelain marble-effect large format tiles (60x120cm)
- Bespoke large bookmatched tile shower area finish

Kitchens & Living:

- Bespoke individually designed kitchen
- Handleless, push to open soft close drawers
- Quartz stone marble worktop & splashback
- Cashmere grey matt finish cabinets with LED strip underlighting
- Breakfast bar island with cooking area & second sink
- Pantry room with cupboards, shelving & wine storage
- 60 inch recessed TV surround with bioethanol electric fireplace
- Built-in espresso machine & wine cooler

Equipment:

- Miele smartline induction hob with teppanyaki grillplate & downdraft extraction
- Miele combi microwave/oven & grill
- Miele coffee espresso machine
- Miele single oven x2
- Miele warming drawer x2
- Miele wine cooler
- Siemens integrated fullstanding fridge
- Siemens integrated fullstanding freezer
- Siemens dishwasher x2
- Quooker 4-in-1 tap (boiling/chilled/room/sparkling)

Utility Room:

- Cashmere grey & truffle oak finish cabinets with LED strip underlighting
- Miele washline machine
- Miele tumble dryer
- Sink area with quartz stone 65mm worktop

Principal Bedroom:

- Built-in wardrobes with hanging space, rails and LED-lit shelves
- Dressing table with hollywood-style mirror lighting
- Bifolding doors with private balcony access

Bathrooms & En-suites:

- Luxury German & Italian brands including Grohe, Duravit & Quadro
- Glass steam shower enclosure with ceiling mounted shower, twin seats, hand held shower and 6kW steam unit w/smart control
- Hidden shaver sockets
- Twin sinks with bespoke vanity unit drawer and shelving
- Freestanding bath with handheld shower
- 19-inch waterproof TV over bath
- Wall mounted heated towel bars x3
- Stainless Steel taps and finishes

ENQUIRIES:
INFO@LUXLEYHOUSE.CO.UK



glentree
NEW HOMES
020 8731 9500
www.glentree.com

Score	Energy rating	Current	Potential
92+	A	94 A	94 A
81-91	B		
69-80	C		
55-68	D		
39-54	E		
21-38	F		
1-20	G		