

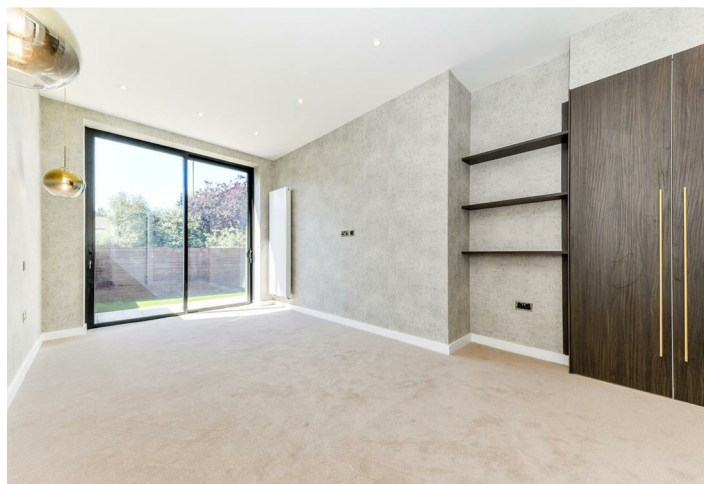


glentree

RENTALS

020 8209 1144

www.glentree.com



2, The Ridgeway, NW11

A stunning brand-new ground-floor apartment is available for rent in Golders Green.

This high-quality, new-build apartment offers nearly 1000 sq ft of living space. The spacious living room has an open-plan kitchen and direct access to the private garden.

The large principal bedroom also has direct access to the private garden and provides fitted cupboards and an en-suite bathroom. There are 2 further double bedrooms with a family bathroom.

Further benefits include an external storage cupboard, air conditioning throughout, off-street parking for 1 car (with an electric car charging point), and a lift in the building. This property to rent in NW11 is suitable for long-term letting. Contact us today for more information or to arrange a viewing.

Available NOW
Long let
EPC Rating C
Barnet Council Band E

£1,038 Per Week



RENTALS 020 8209 1144
SALES 020 8458 7311
FAX 020 8209 0307

E rentals@glentree.com
E sales@glentree.com
W www.glentree.com

Glentree Estates Ltd
698 Finchley Road
London NW11 7NE

GROUND FLOOR
980 sq.ft. (91.1 sq.m.) approx.



TOTAL FLOOR AREA: 980 sq.ft. (91.1 sq.m.) approx.

Whilst every attempt has been made to ensure the accuracy of the floorplan contained here, measurements of doors, windows, rooms and any other items are approximate and no responsibility is taken for any error, omission or mis-statement. This plan is for illustrative purposes only and should be used as such by any prospective purchaser. The services, systems and appliances shown have not been tested and no guarantee as to their operability or efficiency can be given.
Made with Metropix ©2022

Energy Efficiency Rating		Current	Potential
Very energy efficient - lower running costs			
(92 plus) A			
(81-91) B			
(69-80) C			
(55-68) D			
(39-54) E			
(21-38) F			
(1-20) G			
Not energy efficient - higher running costs			
		81	81
England & Wales	EU Directive 2002/91/EC		

Environmental Impact (CO ₂) Rating		Current	Potential
Very environmentally friendly - lower CO ₂ emissions			
(92 plus) A			
(81-91) B			
(69-80) C			
(55-68) D			
(39-54) E			
(21-38) F			
(1-20) G			
Not environmentally friendly - higher CO ₂ emissions			
England & Wales	EU Directive 2002/91/EC		

