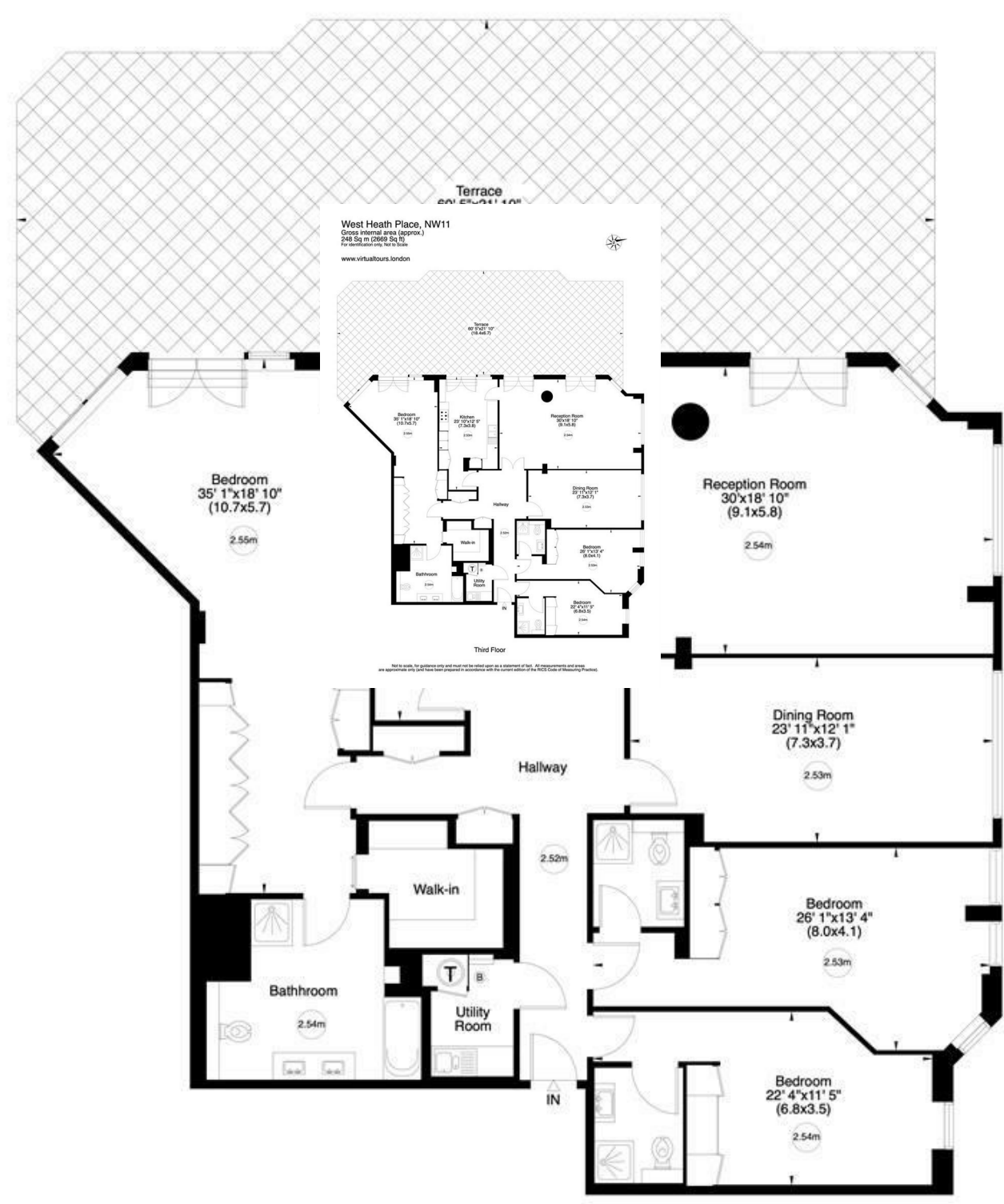


West Heath Place, NW11
Gross internal area (approx.)
248 Sq m (2669 Sq ft)
For identification only, Not to Scale



www.virtualtours.london

newhomes@glentree.com 020 8731 9500 www.glentree.com



Third Floor

Not to scale, for guidance only and must not be relied upon as a statement of fact. All measurements and areas are approximate only (and have been prepared in accordance with the current edition of the RICS Code of Measuring Practice).



West Heath Place, 1B Hodford Road NW11

A stunning & highly desirable 3 bedroom, 3 bathroom (all en-suite) third floor apartment situated in this established block on the corner of The Finchley Road & Hodford Road. West Heath Place offers luxury living with its 24 hr concierge & security, underground parking, lift to all floors, well manicured communal gardens, hotel style lobby & resident's gym. The development is situated close to Golders Green Tube Station and to the shopping centres of Hampstead & Temple Fortune.

The apartment spans 2669 sq ft and offers a fabulous 60' wide, south west facing terrace with uninterrupted views. The accommodation comprises 30' reception room, dining room, kitchen/diner, utility room, beautifully appointed master bedroom with dressing room & en-suite bathroom, two further bedrooms (both with en-suite), underfloor heating, comfort cooling, two underground parking spaces & a storage room.

Internal viewing is highly recommended

GENEROUS RECEPTION ROOM WITH LARGE 60' SOUTH-FACING TERRACE WITH UNINTERRUPTED VIEWS; EAT-IN KITCHEN; SEPARATE DINING ROOM; THREE BATHROOMS (ALL EN-SUITE); UTILITY ROOM; 2 UNDERGROUND PARKING SPACES; STORAGE ROOM; RESIDENT'S GYM; HOTEL-STYLE 24 HOUR CONCIERGE/SECURITY; COMMUNAL GARDENS

SOLE AGENT

£2,750,000

