

Wycome Road, Hall Green



 8

 3

 3



£675,000

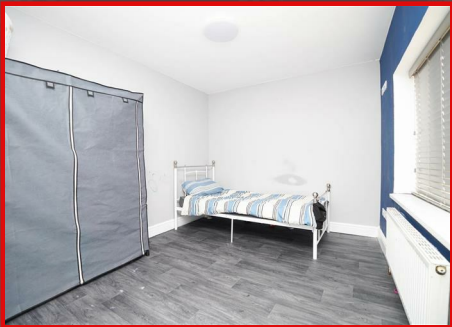
Nestled on the charming Wycome Road in Hall Green, this impressive semi-detached house offers a remarkable blend of space and comfort, perfect for families or those seeking a generous living environment. Spanning an expansive 3,312 square feet, this property boasts eight well-appointed double bedrooms, ensuring ample accommodation for both family and guests.

The heart of the home is undoubtedly the impressive kitchen, which provides a delightful space for culinary creativity and family gatherings. Complementing the kitchen are three spacious reception rooms, each offering a unique atmosphere for relaxation, entertainment, or formal dining. The layout of the house is thoughtfully designed to cater to modern living while retaining the character typical of properties built in the 1930s.

With three bathrooms, morning routines will be a breeze, providing convenience for busy households. The property also features an outbuilding, which could serve a variety of purposes, from a home office to a workshop or additional storage.

Outside, the gigantic garden is a true highlight, offering a private oasis for outdoor activities, gardening, or simply enjoying the fresh air. The garden space is perfect for children to play or for hosting summer barbecues with friends and family.

Parking is made easy with space for up to four vehicles, a valuable asset in this desirable area. This property is not just a house; it is a home that promises comfort, space, and a wonderful lifestyle in the heart of Hall Green. Don't miss the opportunity to make this exceptional property your own.



Wycome Road, Hall Green

- Semi-Detached
- 8 Bedrooms
- Off-Road Parking
- Great Condition
- 3 Reception Rooms
- Impressive Kitchen
- Gigantic Garden
- Ideal Family Home

Reception Room

16'0" x 11'2" (4.88m x 3.40m)
Double glazed bay window to front, laminate flooring, wall mounted radiator, ceiling lights, skirting, coving to ceiling

Living Room

19'1" x 18'11" (5.82m x 5.76m)
Double glazed bi-folding doors to rear, laminate flooring, wall mounted radiator, ceiling lights, skirting, coving to ceiling

Kitchen

19'1" x 9'0" (5.82m x 2.74m)
Double glazed window to rear, tile flooring, splash back tiling, ceiling lights, generous number of storage units, worktops, drainer sink with mixer tap, integrated cooker and extractor fan, integrated dish washer, integrated double oven, plumbing for white goods

Reception Room 2

13'0" x 10'5" (3.97m x 3.18m)
Double glazed window to front, Lino flooring, wall mounted radiator, ceiling lights, skirting, shower unit, pedestal sink with mixer tap,

Shower Room

6'6" x 7'7" (1.98m x 2.32m)
Privacy double glazed window to side, tile flooring, wall tiles, shower unit, pedestal sink with separate taps, toilet, extractor fan, heated towel rail

Master Bedroom

29'4" x 14'4" (8.93m x 4.38m)
Double glazed Velux windows to rear and front, carpet flooring, wall mounted radiator, skirting, ceiling light, fitted wardrobe, built in storage

Bedroom 2

12'2" x 10'3" (3.72m x 3.12m)
Double glazed bay window to front, laminate flooring, wall mounted radiator, skirting, ceiling light

Bedroom 3

11'0" x 10'3" (3.35m x 3.12m)
Laminate flooring, wall mounted radiator, skirting, ceiling light

Bedroom 4

12'6" x 10'3" (3.81m x 3.12m)
Double glazed window to rear, laminate flooring, wall mounted radiator, skirting, ceiling light

Bedroom 5

14'11" x 9'8" (4.55m x 2.95m)
Double glazed window to rear, laminate flooring, wall mounted radiator, skirting, ceiling light

Bedroom 6

14'11" x 9'3" (4.55m x 2.82m)
Double glazed window to rear, laminate flooring, wall mounted radiator, skirting, ceiling light, walk-in wardrobe

Walk-in Wardrobe

2'10" x 5'10" (0.87m x 1.78m)
Laminate flooring, skirting, ceiling light

Bedroom 7

8'10" x 12'0" (2.70m x 3.67m)
Double glazed window to front, laminate flooring, wall mounted radiator, skirting, ceiling light

Bathroom

5'10" x 10'9" (1.80 x 3.30)
Privacy double glazed window to side, tile flooring, jacuzzi bathtub with separate tabs, wall tiles, shower unit over bath, pedestal sink with mixer tap, toilet, extractor fan, heated towel rail

Bedroom 8

14'0" x 11'4" (4.27m x 3.45m)
Double glazed Velux window to, carpet flooring, wall mounted radiator, skirting, ceiling light

Bathroom

13'5" x 6'3" (4.10m x 1.90m)
Double glazed Velux window, tile flooring, jacuzzi bathtub with separate tabs, wall tiles, shower unit over bath, pedestal sink with mixer tap, toilet, extractor fan, heated towel rail

Game Room/ Gym

11'8" x 26'7" (3.56m x 8.11m)
Double glazed windows to front, laminate flooring, electric heater, skirting, ceiling light

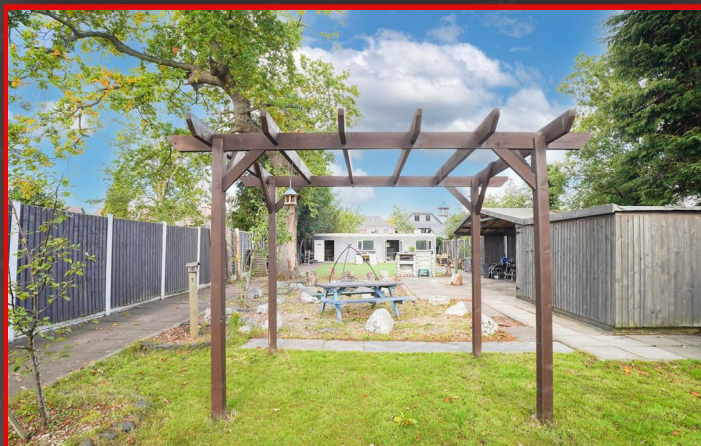
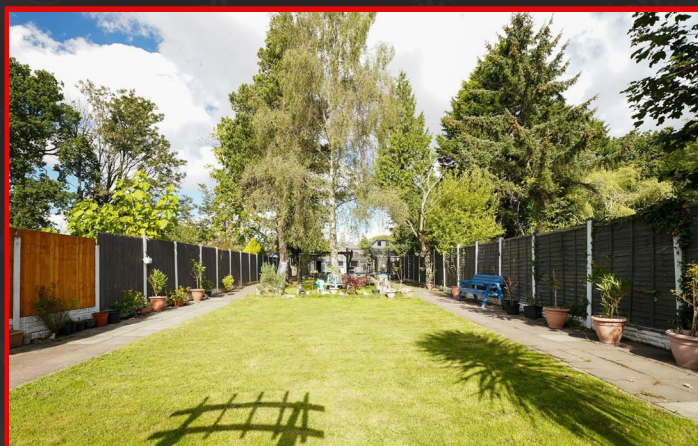
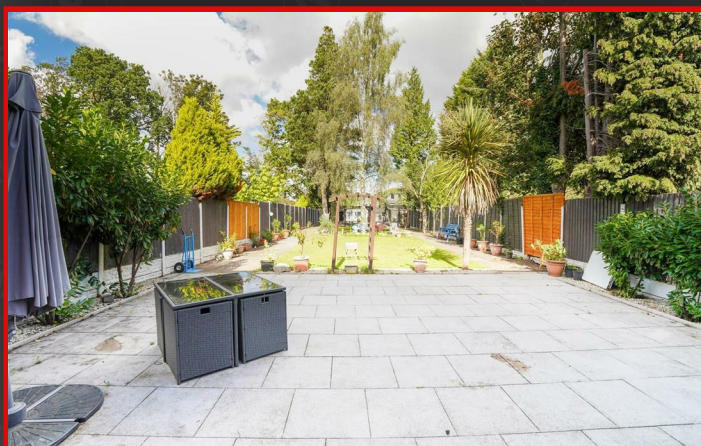
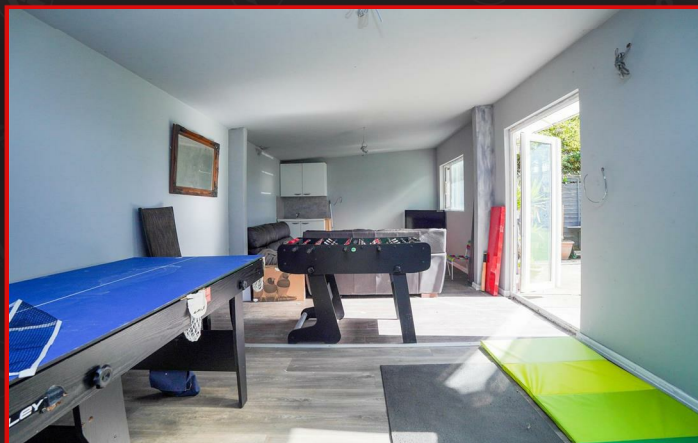
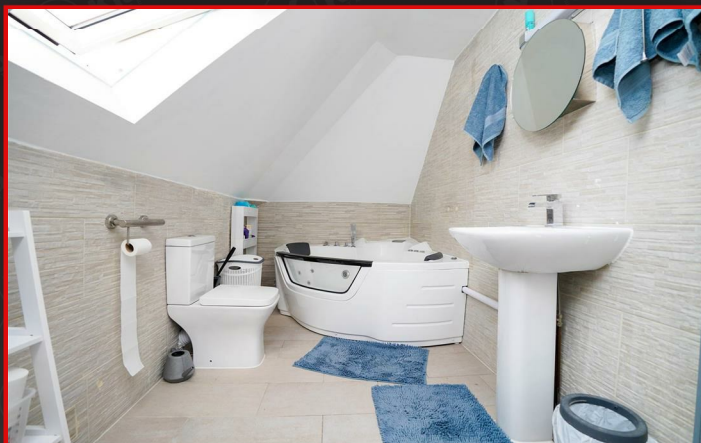
Garden

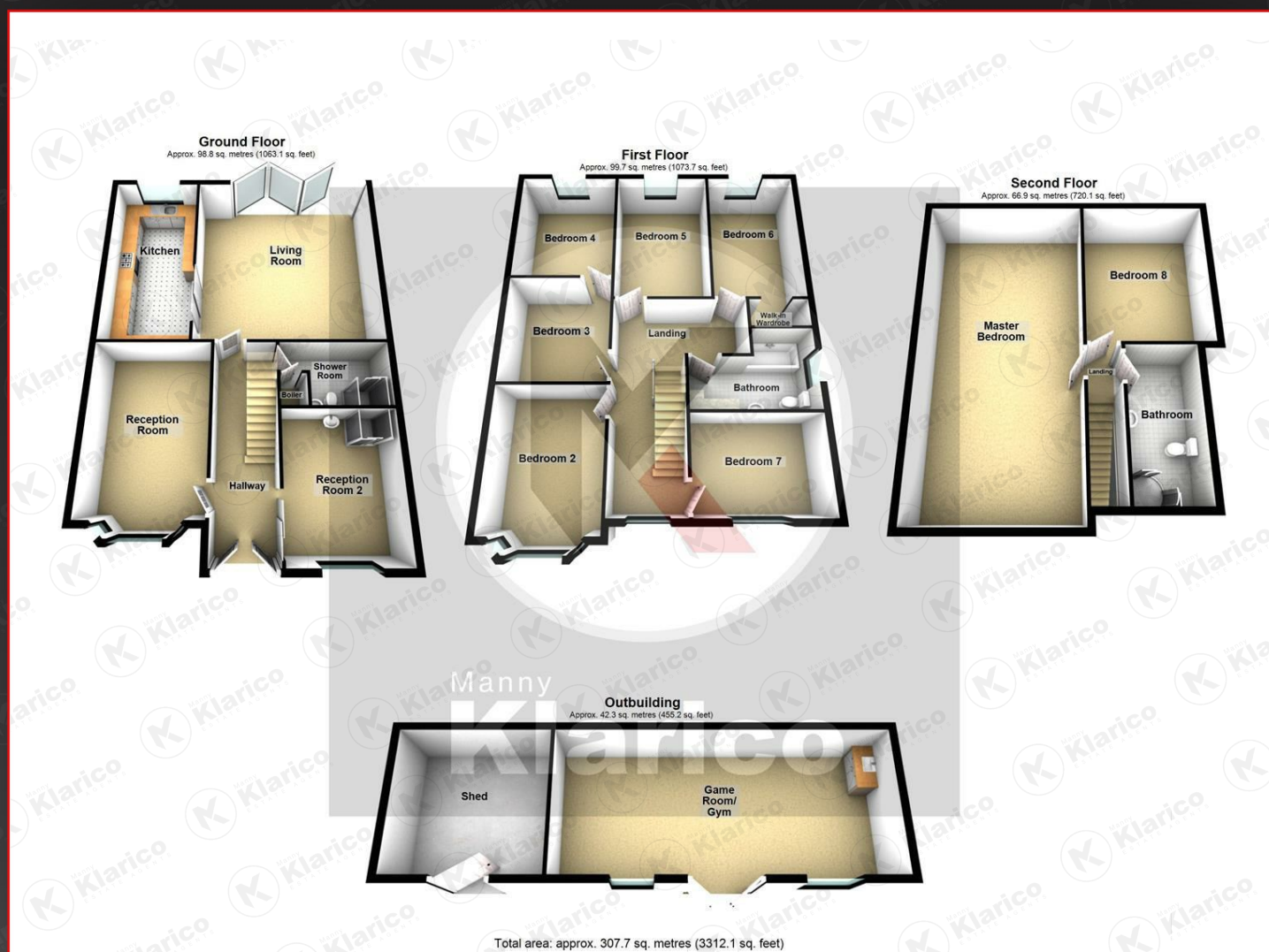
Spacious garden, garden slabs, privacy from rear, fence panels to boundaries, laid lawn, patio area

Directions



Wycome Road, Hall Green





Manny
Klarico
ESTATE AGENTS

176 Highfield Road
Hall Green
Birmingham
West Midlands
B28 0HT

0121 777 7211
www.mannyklarico.co.uk

