

Southam Road,

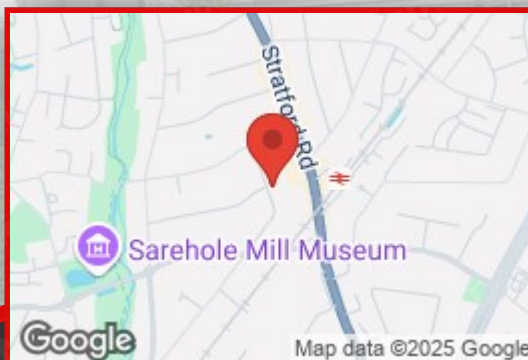


Contact us for more information 0121 777 7211

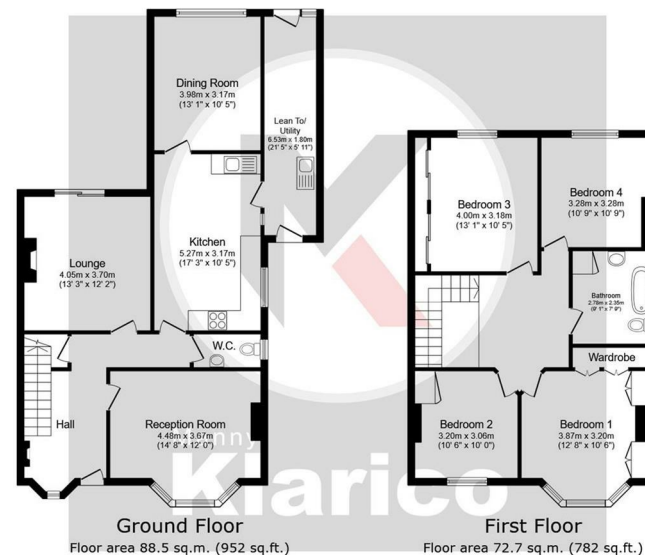
Southam Road,



Directions



Nestled on the desirable Southam Road in Birmingham, this charming semi-detached house presents an excellent opportunity for families seeking a comfortable and spacious home. Boasting four well-proportioned bedrooms, this property is designed to accommodate the needs of modern family life.



Total floor area: 161.2 sq.m. (1,735 sq.ft.)

This floor plan is for illustrative purposes only. It is not drawn to scale. Any measurements, floor areas (including any total floor area), openings and orientations are approximate. No details are guaranteed, they cannot be relied upon for any purpose and do not form any part of any agreement. No liability is taken for any error, omission or misstatement. A party must rely upon its own inspection(s).

Front Garden

Hall

Reception Room
4.48 x 3.67 (14'8" x 12'0")

Lounge
4.05 x 3.70 (13'3" x 12'1")

W.C.

Kitchen
5.27 x 3.17 (17'3" x 10'4")

Dining Room
3.98 x 3.17 (13'0" x 10'4")

Lean To/Utility

6.53 x 1.80 (21'5" x 5'10")

Bedroom 1
3.87 x 3.20 (12'8" x 10'5")

Bedroom 2
3.20 x 3.06 (10'5" x 10'0")

Bedroom 3
4.00 x 3.18 (13'1" x 10'5")

Bedroom 4
3.28 x 3.28 (10'9" x 10'9")

Bathroom
2.78 x 2.35 (9'1" x 7'8")

www.mannyklarico.co.uk

176 Highfield Road, Hall Green, Birmingham, West Midlands, B28 0HT