

Woodlands Road, Sparkhill



£599,950

Nestled on the charming Woodlands Road in the vibrant area of Sparkhill, Birmingham, this semi-detached house presents an exceptional opportunity for families seeking a spacious and comfortable home. Boasting five generously sized bedrooms, this property is designed to accommodate the needs of a growing family, providing ample space for relaxation and privacy.



Woodlands Road, Sparkhill

- Semi detached
- Spacious
- Double Glazed
- Off Street Parking
- 5 Bedrooms
- Ideal Family Home
- Excellent Condition

Front Garden

Brick paving with off street parking

Porch

Hallway

Laminate flooring, skirting board, coving, ceiling light

Shower Room

7'10" x 5'10" (2.40 x 1.80)

Privacy double glazed window to front, tiled flooring, ceiling light, splashback tiles, wash basin with mixer tap, shower cubicle with curtain, extractor fan

Utility

5'10" x 3'11" (1.80 x 1.20)

Living Room

18'4" x 10'9" (5.60 x 3.30)

Double glazed bay window to front, skirting board, coving, chimney breast, fireplace, wall mounted radiator, air ventilation, ceiling light

Living Room

26'10" x 13'9" (8.20 x 4.20)

Double glazed patio doors to rear, laminate flooring, ceiling light, coving, chimney breast, fireplace, ceiling fan, wall mounted radiator

Kitchen/Diner

27'10" x 13'1" (8.50 x 4.00)

Double glazed window to rear and side, down lights, tiled flooring, splashback tiles, coving, skirting board, generous number of storage units, fitted island with storage, extractor hood, integrated oven/grill, integrated dishwasher, drainer sink with mixer tap, heated towel rail

Bedroom 1

13'9" x 13'1" (4.20 x 4.00)

Double glazed window to rear, ceiling light, coving, carpet, skirting board, fitted wardrobes, wall mounted radiator

Bedroom 2

15'8" x 10'5" (4.80 x 3.20)

Double glazed bay window to rear, ceiling light, skirting board, coving, carpet, wall mounted radiator, fitted wardrobes

Bedroom 3

13'9" x 10'9" (4.20 x 3.30)

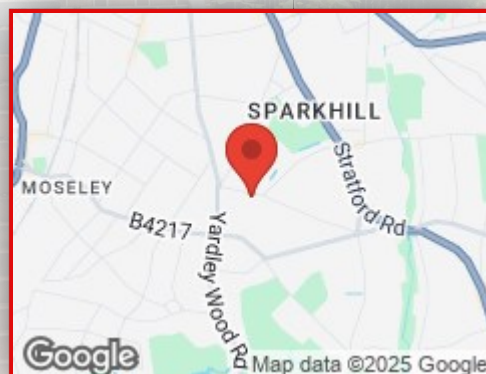
Double glazed window to rear, ceiling light, coving, skirting board, carpet, fitted wardrobes, wall mounted radiator

Bedroom 4

16'4" x 8'6" (5.00 x 2.60)

Double glazed window to front, skirting board, coving, wall mounted radiator, ceiling light, storage unit, carpet

Directions



Woodlands Road, Sparkhill



Bathroom

7'6" x 6'6" (2.30 x 2.00)

Privacy double glazed window to side, tiled flooring, extractor fan, heated towel rail, wash basin with mixer tap, toilet, bath tub with shower, tiled walls, ceiling lights

Bedroom 5

13'1" x 13'1" (4.00 x 4.00)

Double glazed window to rear, carpet, ceiling light, skirting board, wall mounted radiator, fitted wardrobes,

Shower room

8'2" x 6'6" (2.50 x 2.00)

Privacy double glazed window to side, toilet, wash basin with mixer tap, shower cubicle, with mixer tap, tiled flooring, tiled walls, ceiling light, heated towel rail



Rear Garden

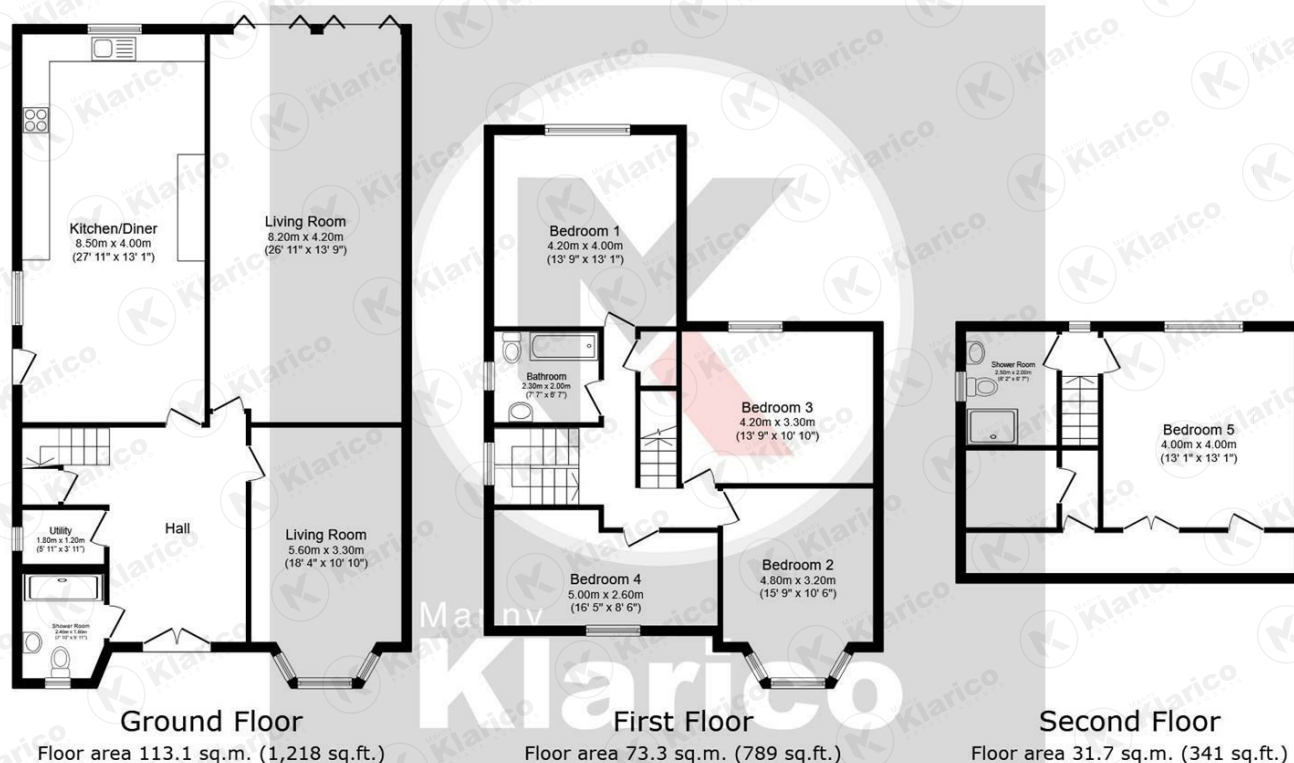
Spacious garden with tiled flooring, fenced boundaries,

Woodlands Road, Sparkhill



Woodlands Road, Sparkhill





Total floor area: 218.1 sq.m. (2,347 sq.ft.)

This floor plan is for illustrative purposes only. It is not drawn to scale. Any measurements, floor areas (including any total floor area), openings and orientations are approximate. No details are guaranteed, they cannot be relied upon for any purpose and do not form any part of any agreement. No liability is taken for any error, omission or misstatement. A party must rely upon its own inspection(s).



Manny
Klarico
ESTATE AGENTS

176 Highfield Road
Hall Green
Birmingham
West Midlands
B28 0HT

0121 777 7211
www.mannyklarico.co.uk

