

Colebourne Road,



£450,000

Colebourne Road,

- Semi-Detached
- 5 Bedrooms
- Off-Road Parking
- Double Glazing
- Ideal Family Home
- 2 Reception Rooms
- Impressive Kitchen/Diner
- Garden, Out Building
- Gas Central Heating
- Ideal Buy to Let

Tenure: Freehold
Council Tax Band: B

Nestled on the charming Colebourne Road in Birmingham, this semi-detached house offers a wonderful opportunity for those seeking a spacious family home. With a generous 1,608 square feet of living space, the property boasts five well-proportioned bedrooms, making it ideal for larger families or those who desire extra room for guests or a home office.

The house features two inviting reception rooms, perfect for entertaining or relaxing with loved ones. Additionally, the three bathrooms provide ample facilities for a busy household, ensuring convenience and comfort for all residents.

Constructed in the late 1940s, this property retains a sense of character while offering the potential for modernization. While some work is required to bring it up to your personal standards, the good-sized rooms present a blank canvas for your creative vision.

Parking is a breeze with space for two vehicles, a valuable asset in this bustling area. The location on Colebourne Road is well-connected, providing easy access to local amenities, schools, and transport links, making it a practical choice for families and commuters alike.

In summary, this semi-detached house on Colebourne Road is a promising prospect for those looking to invest in a spacious family home with the potential for personalization. With its ample bedrooms, multiple bathrooms, and inviting reception areas, it is a property that invites you to make it your own.

Directions

Reception

3.30m x 3.57m (10'10" x 11'9")
Double glazed bay window to front, laminate flooring, wall mounted radiator, ceiling lights, skirting

Living Room

4.11m x 3.02m (13'6" x 9'11")
Double glazed sliding patio door to rear, laminate flooring, ceiling light, skirting, wall mounted radiator

Study

3.21m x 1.95m (10'6" x 6'5")
Double glazed window to front, laminate flooring, wall mounted radiator, skirting, ceiling light

Kitchen

2.00m x 4.16m (6'7" x 13'8")
Double glazed window to rear, tile flooring, splash back tiling, ceiling lights, generous number of storage units, worktops, drainer sink with mixer tap, gas cooker and extractor fan

Utility

1.84m x 1.95m (6'0" x 6'5")
Laminate flooring, ceiling lights, skirting

Shower Room

2.18m x 1.80m (7'2" x 5'11")
Privacy double glazed window to side, tile flooring, wall tiles, shower unit, pedestal sink with mixer tap, heated towel rail

Bedroom 1

3.82m x 3.33m (12'6" x 10'11")
Double glazed window to rear, carpet flooring, wall mounted radiator, skirting, ceiling light

En-suite

2.17m x 1.89m (7'1" x 6'2")
Privacy double glazed window to rear, tile flooring, wall tiles, shower unit, pedestal sink with mixer tap, heated towel rail, extractor fan

Bedroom 2

3.63m x 3.33m (11'11" x 10'11")
Double glazed bay window to front, carpet flooring, wall mounted radiator, skirting, ceiling light

Bedroom 3

2.55m x 1.89m (8'4" x 6'2")
Double glazed window to front, carpet flooring, wall mounted radiator, skirting, ceiling light

Bedroom 4

4.16m x 1.95m (13'8" x 6'5")
Double glazed window to front, carpet flooring, wall mounted radiator, skirting, ceiling light

Bedroom 5

4.86m x 5.58m (15'11" x 18'4")
Double glazed Velux windows, carpet flooring, wall mounted radiator, skirting, ceiling light

Bathroom

3.14m x 1.82m (10'4" x 6'0")
Privacy double glazed window to rear, tile flooring, wall tiles, bathtub with mixer tap, shower unit, pedestal sink with mixer tap, heated towel rail, extractor fan

Out Building

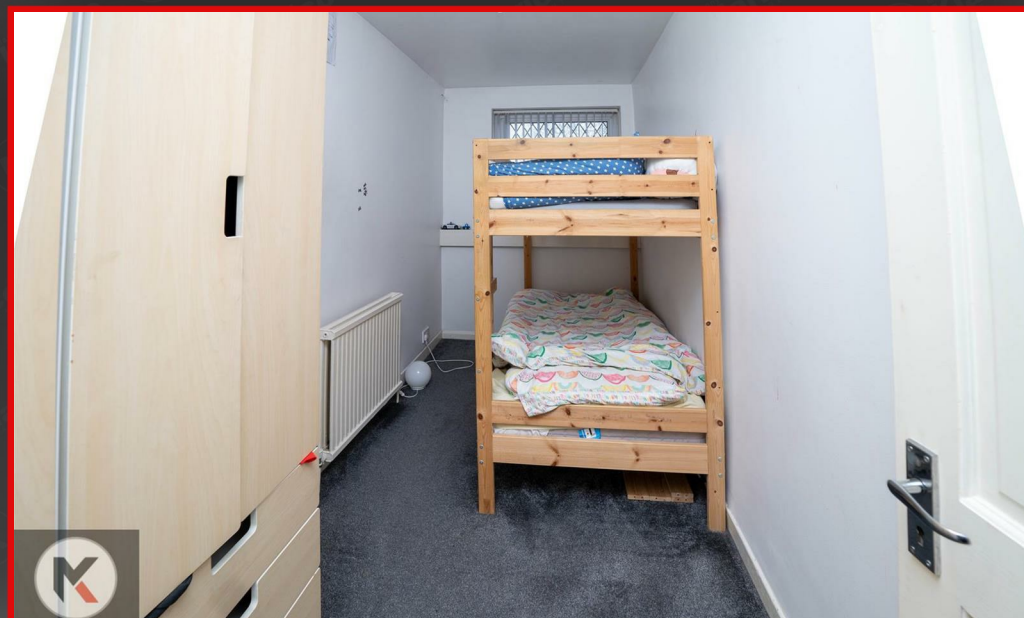
Two windows to front, single glazed door to garden, worktop

Garden

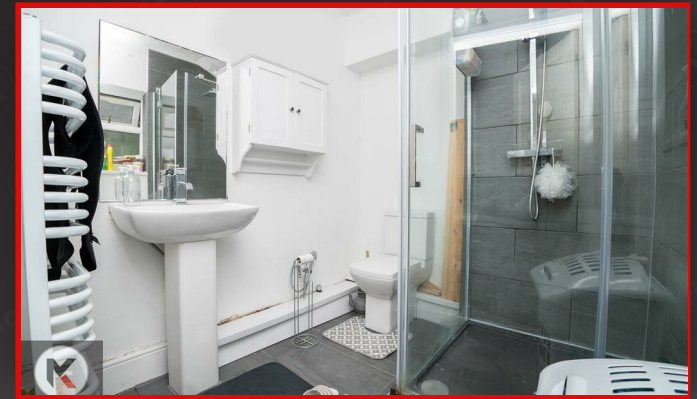
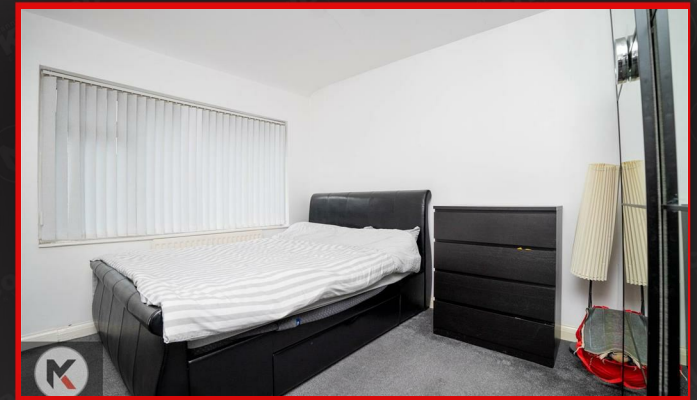
Spacious garden, garden slabs, privacy from rear, Fence panels to boundaries, laid lawn, patio area



Colebourne Road,



Colebourne Road,



Colebourne Road,



