

Reddings Lane, Hall Green



Offers Over £230,000

Welcome to this charming property located on Reddings Lane in the sought-after area of Hall Green, Birmingham. This delightful mid-terrace house boasts 2 reception rooms, 3 bedrooms, and a bathroom spread across a spacious 1,335 sq ft.

One of the standout features of this property is the gas central heating, ensuring you stay warm and cosy during the colder months. The big garden offers ample space for outdoor activities, gardening, or simply relaxing in the fresh air. The loft has been beamed and boarded, with 2 loft windows. Offering excellent additional storage or potential for further development.

With the added bonus of off-road parking, convenience is at your doorstep. The property also presents great potential for personalization and enhancement, allowing you to truly make it your own.

Don't miss out on this fantastic opportunity to own a lovely home in a desirable location with plenty of space and potential. Contact us today to arrange a viewing and start envisioning your future in this wonderful property.



Reddings Lane, Hall Green

- 2 Reception Rooms
- Well lighted
- Off-Road Parking
- Ideal for First Time Buyers
- 3 Bedrooms
- Gas Central Heating
- Garden
- Ideal Family Home

Reception Room

14'0" x 11'6" (4.27m x 3.51m)

Single glazed bay window to front, wooden floorboards flooring, chimney breast, wall mounted radiator, ceiling lights, skirting, coving to ceiling

Dining Room

12'1" x 11'9" (3.70 x 3.60)

Double glazed door to rear, wooden floorboards flooring, chimney breast, wall mounted radiator, ceiling lights, skirting, coving to ceiling

Kitchen/Diner

19'0" x 9'2" (5.80 x 2.80)

Single glazed window to side, splashback tiling, ceiling lights, storage units, worktops, drainer sink with mixer tap

Toilet

Privacy single glazed window to side, wood flooring, wall tiles, toilet

Bedroom 1

17'0" x 11'1" (5.20 x 3.40)

Single glazed windows to front, carpet, wall mounted radiator, skirting, ceiling light

Bedroom 2

13'5" x 12'5" (4.10 x 3.80)

Single glazed window to rear, carpet, wall mounted radiator, skirting, ceiling light

Bedroom 3

11'5" x 9'2" (3.50 x 2.80)

Double glazed window to rear, wood flooring, wall mounted radiator, skirting, ceiling light

Bathroom

7'6" x 6'2" (2.30 x 1.90)

Privacy single glazed window to side, wood flooring, wall tiles, bathtub with separate taps, shower unit, pedestal sink with taps

Garden

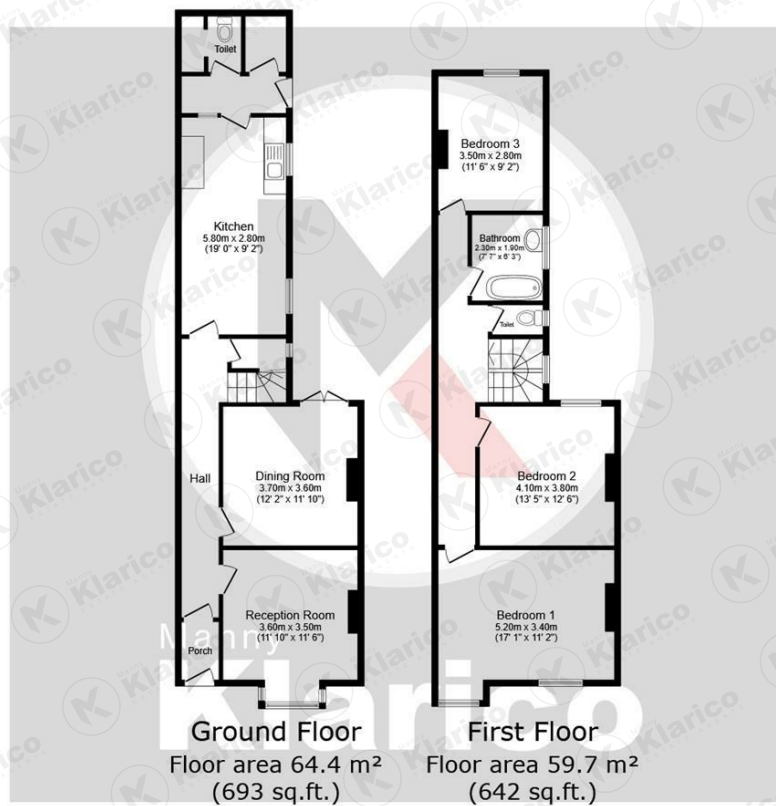
Spacious garden, garden slabs, patio area, Hedge shrubs

Directions



Reddings Lane, Hall Green





TOTAL: 124.1 m² (1,335 sq.ft.)

This floor plan is for illustrative purposes only. It is not drawn to scale. Any measurements, floor areas (including any total floor area), openings and orientations are approximate. No details are guaranteed, they cannot be relied upon for any purpose and do not form any part of any agreement. No liability is taken for any error, omission or misstatement. A party must rely upon its own inspection(s).



Manny
Klarico
ESTATE AGENTS

176 Highfield Road
Hall Green
Birmingham
West Midlands
B28 0HT

0121 777 7211

www.mannyklarico.co.uk

