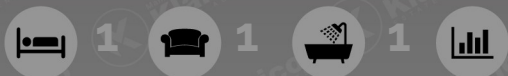


Rivendell Court, Stratford Road, Hall Green



Contact us for more information 0121 777 7211

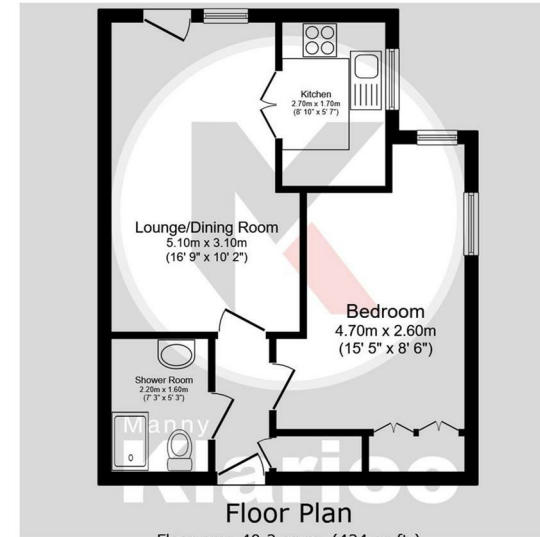




## Directions



KLARICO Estate Agents are delighted to present this one bedroom retirement apartments located on the ground floor of the popular Rivendell Court Development in Hall Green, Birmingham. Features secured parking to the rear with a range of communal facilities.



**Floor Plan**  
Floor area 40.3 sq.m. (434 sq.ft.)

TOTAL: 40.3 sq.m. (434 sq.ft.)

This floor plan is for illustrative purposes only. It is not drawn to scale. Any measurements, floor areas (including any total floor area), openings and orientations are approximate. No details are guaranteed, they cannot be relied upon for any purpose and do not form any part of any agreement. No liability is taken for any error, omission or misstatement. A party must rely upon its own inspection(s).

**Lounge/Dining Room**  
5.10m x 3.10m (16'8" x 10'2")

2.70m x 1.70m (8'10" x 5'6")

**Bedroom**  
4.70m x 2.60m (15'5" x 8'6")

**Shower Room**  
2.20m x 1.60m (7'2" x 5'2")

**Kitchen**