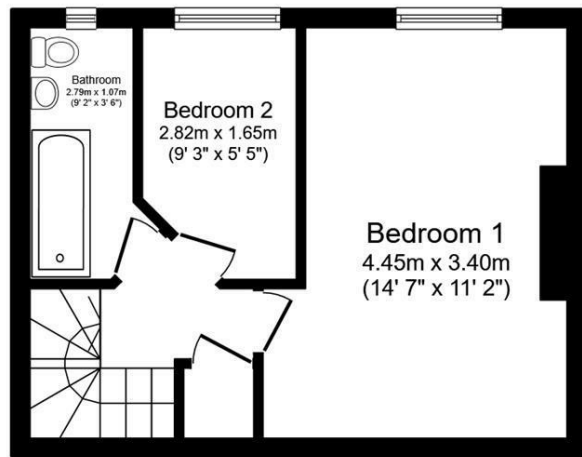


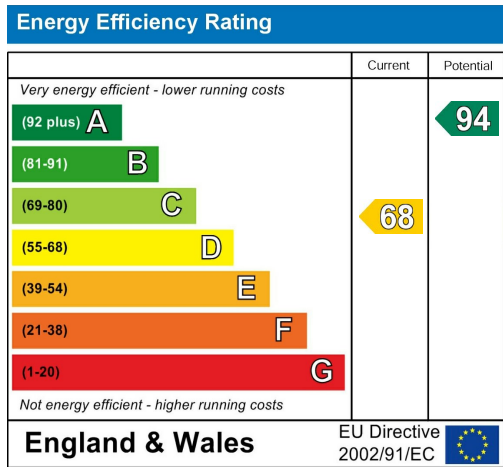
Ground Floor
Floor area 27.6 m² (297 sq.ft.)



First Floor
Floor area 27.6 m² (297 sq.ft.)

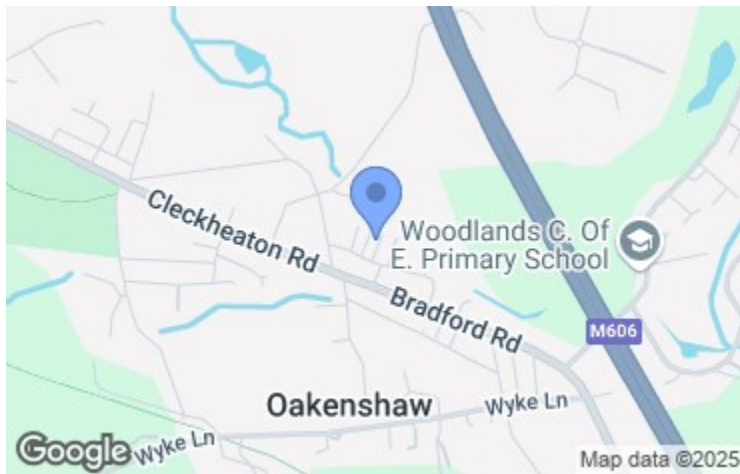
TOTAL: 55.3 m² (595 sq.ft.)

This floor plan is for illustrative purposes only. It is not drawn to scale. Any measurements, floor areas (including any total floor area), openings and orientations are approximate. No details are guaranteed, they cannot be relied upon for any purpose and do not form any part of any agreement. No liability is taken for any error, omission or misstatement. A party must rely upon its own inspection(s). Powered by www.Propertybox.io



Viewing arrangements

Strictly by appointment through WW Estates
01274 693737
wibsey@wwestateagents.com



Directions

See mapping.



Beresford Street, Bradford, BD12 7DD
£85,000

5 - 7 Beacon Road, Wibsey, Bradford, BD6 3HB | 01274 693737 | wibsey@wwestateagents.com | www.wwestateagents.com

IMPORTANT: we would like to inform prospective purchasers that these sales particulars have been prepared as a general guide only. A detailed survey has not been carried out, nor the services, appliances and fittings tested. Room sizes should not be relied upon for furnishing purposes and are approximate. If floor plans are included, they are for guidance only and illustration purposes only and may not be to scale. If there are any important matters likely to affect your decision to buy, please contact us before viewing the property.

Beresford Street, Bradford, BD12 7DD

 1  2  1

No Onward Chain *** Ideal First Time Buy Or Investment *** Fantastic Transport Links *** Sought After Location. Located in the charming area of Oakenshaw, Bradford, this delightful two-bedroom back-to-back house on Beresford Street presents an excellent opportunity for first-time buyers or those seeking a cosy home. Offered with no onward chain, this property is ready for you to move in and make it your own.

Outside, on-road parking is available, providing ease of access for you and your guests. This property combines comfort and convenience in a friendly neighbourhood, making it a wonderful place to call home. Don't miss the chance to view this charming house and envision the possibilities it holds for you.

Upon entering, you are welcomed into a spacious lounge with a feature fireplace. The kitchen is equipped with fitted wall and base units, a free-standing cooker, and space for your appliances, making it a practical space for culinary endeavours. Additionally, the cellar provides valuable storage, ensuring your living areas remain clutter-free.

The first floor comprises two well-proportioned bedrooms, ideal for restful nights. The bathroom is conveniently located and includes a bath, a low-level WC, and a hand wash basin, catering to all your essential needs.



Train
your text here



Primary School
your text here



Secondary School
your text here

Fixtures & fittings
Two bedroom back-to-back in sought after location being sold with no onward chain.

Rating authority
Borough Council Tax Band A

Services
INDEPENDENT MORTGAGE ADVICE AVAILABLE. HOME MOVERS - FIRST TIME BUYER - RE-MORTGAGES, INVESTORS & PROTECTION ETC. WW Estates introduce to Altogether Financial Solutions Ltd, who are authorised and regulated by the Financial Conduct Authority.

Tenure
Freehold