



## Kew Bridge Road, TW8

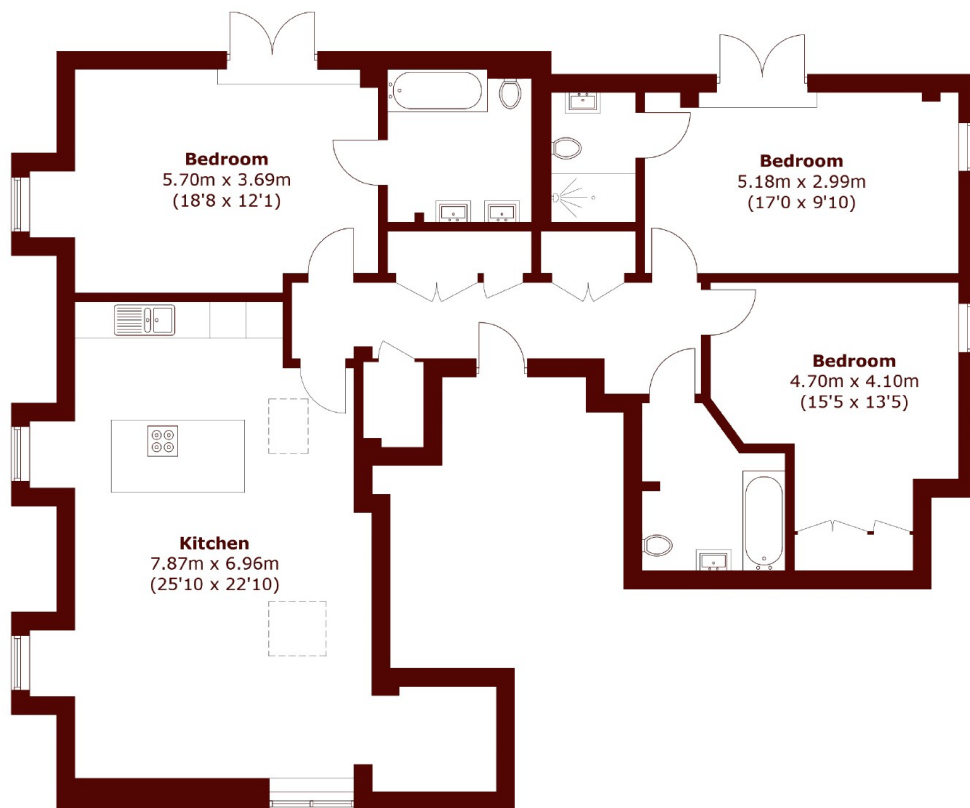
£1,000,000

 3  3  1  B

• Three Bedrooms

• Two Bathrooms

• No Chain



Total area (approx.): 126.5 sq. m (1,361.6 sq. ft)

## Marsh & Parsons Chiswick

34-38 Turnham Green  
Terrace, London, W4 1QP  
020 8994 2556