

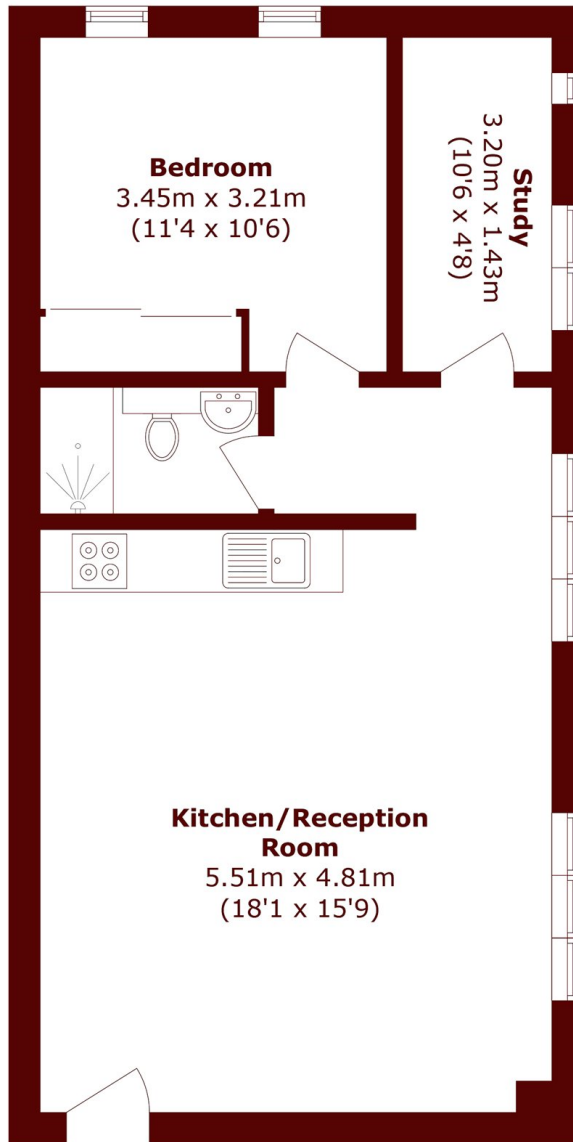


## Power Road, W4

£2,400 pcm



- Modern First Floor Apartment
- Open-plan Living
- Integrated Kitchen
- Two Bedrooms
- Contemporary Shower Room
- Excellent Location



Total area (approx.): 50.4 sq. m (542.5 sq. ft)

## Marsh & Parsons Chiswick

34-38 Turnham Green  
Terrace, London, W4 1QP  
020 8994 2556