

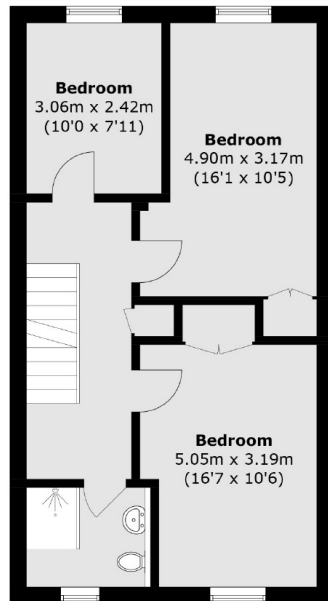


Ibis Lane, W4

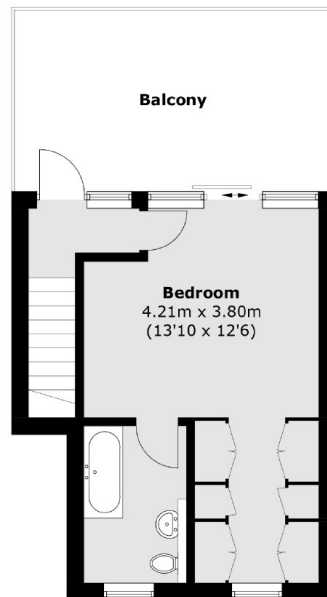
£5,000 pcm



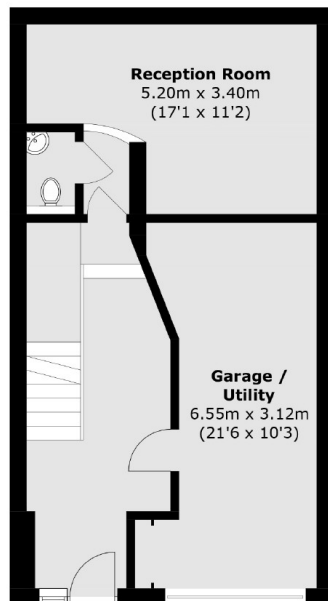
- Town House
- Marina Views
- Four Bedrooms
- Garage
- Off-Street Parking
- Roof Terrace



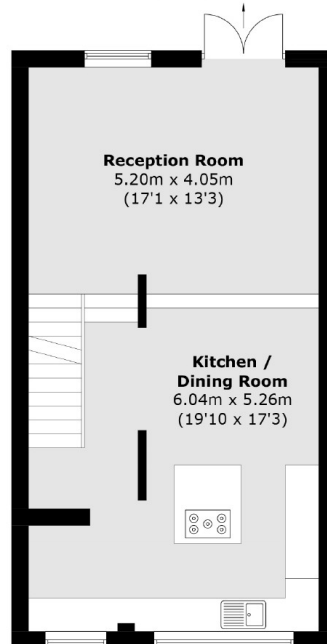
Second Floor



Third Floor



Ground Floor



First Floor

Total area (approx.): 190.0 sq. m (2045.2 sq. ft)
Balcony: 18.5 sq. m (199.1 sq. ft)

Marsh & Parsons Chiswick

34-38 Turnham Green
Terrace, London, W4 1QP
020 8994 2556