



## Dewsbury Court, W4

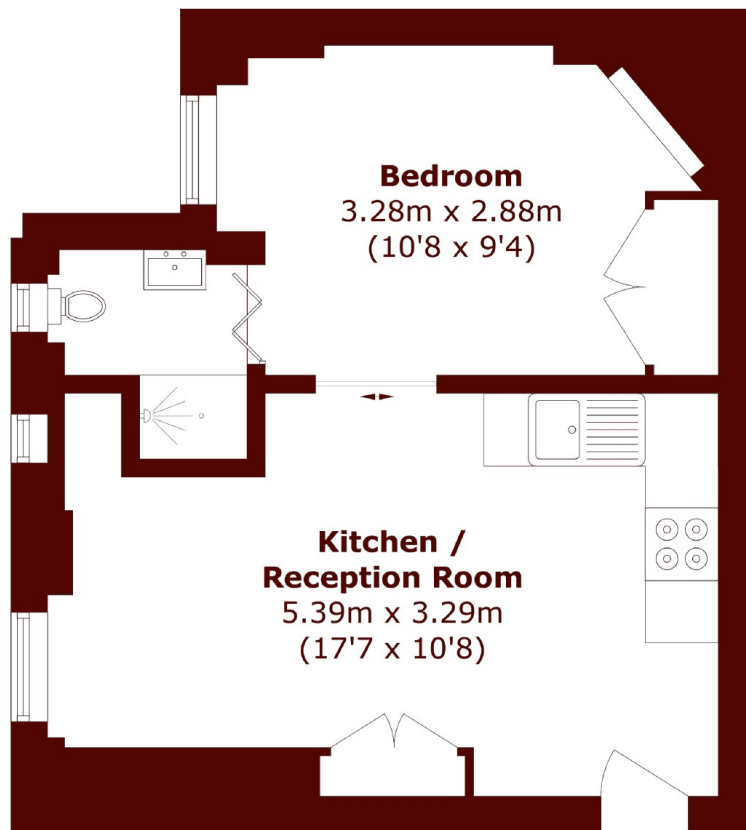
£280,000



- One Bedroom
- No Onward Chain

- Close to transport
- Communal Garden

- Immaculately presented
- Local Amenities



Total area (approx.): 31.7 sq. m (341.2 sq. ft)

**Marsh & Parsons Chiswick**

34-38 Turnham Green  
Terrace, London, W4 1QP  
020 8994 2556