



# Village Map.

The Properties  
The Village  
The Community

**Austin Heath**  
*Inspired* in Warwick

# Properties

Each of our homes at Austin Heath benefits from a combination of thoughtful design and proud craftsmanship, creating homes for you to fill with love, laughter and memories.

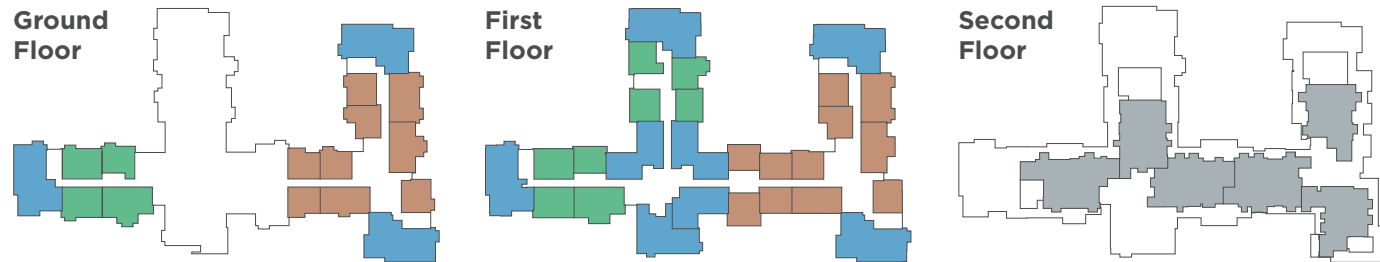
## Apartment types

- The Cromwell/Blake
- The Nelson
- The Byron
- Assisted Living Apartment
- The Newton
- The Bronte
- The Churchill
- Panorama
- The Shakespeare
- The Darwin
- Village Centre Apartment
- Penthouse



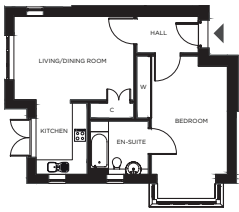
# The Grange Village Centre Apartments

Our 57 eagerly awaited Village Centre Apartments, Panorama Apartments, Penthouse Apartments and Assisted Living Apartments are set within the vibrant, state-of-the-art Village Centre, close to all amenities and facilities.

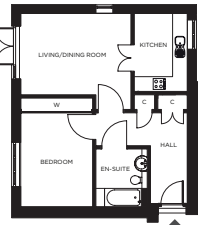


# Apartment types

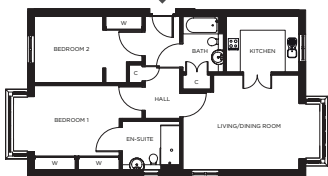
- The Cromwell
- The Blake
- The Newton
- The Shakespeare



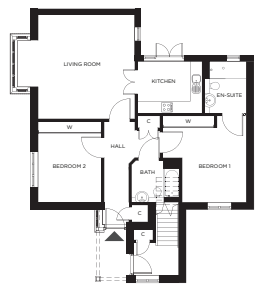
There are 3 Cromwell apartments, ranging from 548 ft<sup>2</sup> (51 m<sup>2</sup>) to 578 ft<sup>2</sup> (54 m<sup>2</sup>).



There are 9 Blake apartments, ranging from 525 ft<sup>2</sup> (49 m<sup>2</sup>) to 596 ft<sup>2</sup> (55 m<sup>2</sup>).

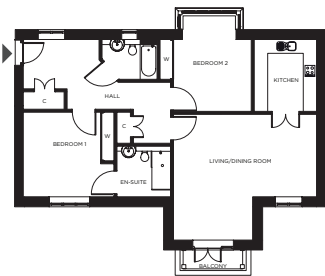


There are 8 Newton apartments, ranging from 828 ft<sup>2</sup> (77 m<sup>2</sup>) to 937 ft<sup>2</sup> (87 m<sup>2</sup>).



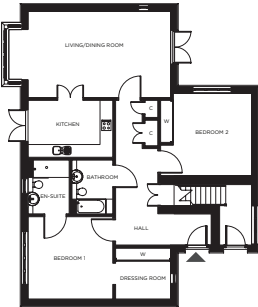
There are 6 Shakespeare apartments, ranging from 915 ft<sup>2</sup> (85 m<sup>2</sup>) to 1,021 ft<sup>2</sup> (95 m<sup>2</sup>).

- The Nelson



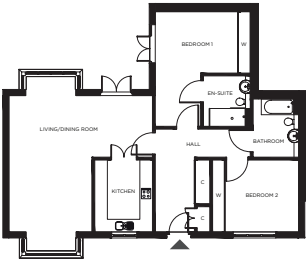
There are 11 Nelson apartments, ranging from 1,082 ft<sup>2</sup> (101 m<sup>2</sup>) to 1,161 ft<sup>2</sup> (108 m<sup>2</sup>).

- The Bronte



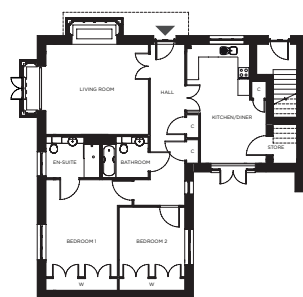
There are 2 Bronte apartments, one 1,207 ft<sup>2</sup> (112 m<sup>2</sup>) the other 1,215 ft<sup>2</sup> (113 m<sup>2</sup>).

- The Darwin



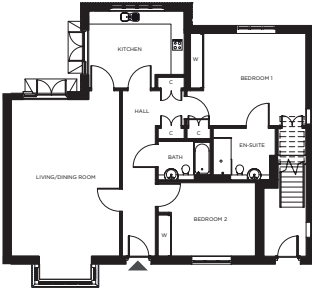
There are 10 Darwin apartments, ranging from 1,058 ft<sup>2</sup> (98 m<sup>2</sup>) to 1,229 ft<sup>2</sup> (114 m<sup>2</sup>).

- The Byron



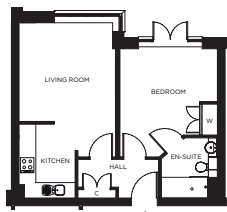
There are 2 The Byron apartments, one 1,275 ft<sup>2</sup> (118 m<sup>2</sup>) the other 1,319 ft<sup>2</sup> (123 m<sup>2</sup>).

- The Churchill



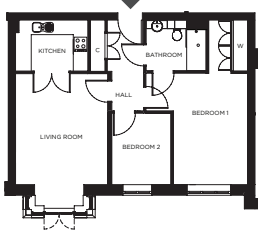
There are 6 Churchill apartments, ranging from 1,271 ft<sup>2</sup> (118 m<sup>2</sup>) to 1,398 ft<sup>2</sup> (130 m<sup>2</sup>).

- Village Centre



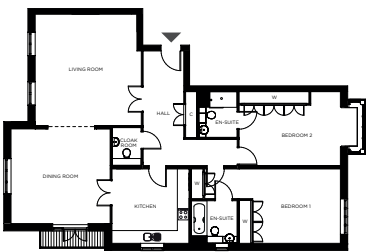
There are 20 Village Centre apartments, ranging from 471 ft<sup>2</sup> (44 m<sup>2</sup>) to 857 ft<sup>2</sup> (80 m<sup>2</sup>).

- Assisted Living



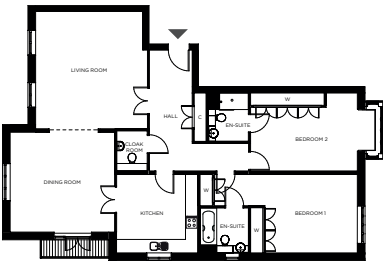
There are 12 Assisted Living apartments, ranging from 500 ft<sup>2</sup> (46 m<sup>2</sup>) to 945 ft<sup>2</sup> (88 m<sup>2</sup>).

- Panorama



There are 11 Panorama apartments, ranging from 1,071 ft<sup>2</sup> (100 m<sup>2</sup>) to 1,622 ft<sup>2</sup> (151 m<sup>2</sup>).

- Penthouse



There are 6 Penthouse apartments, ranging from 1,995 ft<sup>2</sup> (185 m<sup>2</sup>) to 2,367 ft<sup>2</sup> (220 m<sup>2</sup>).

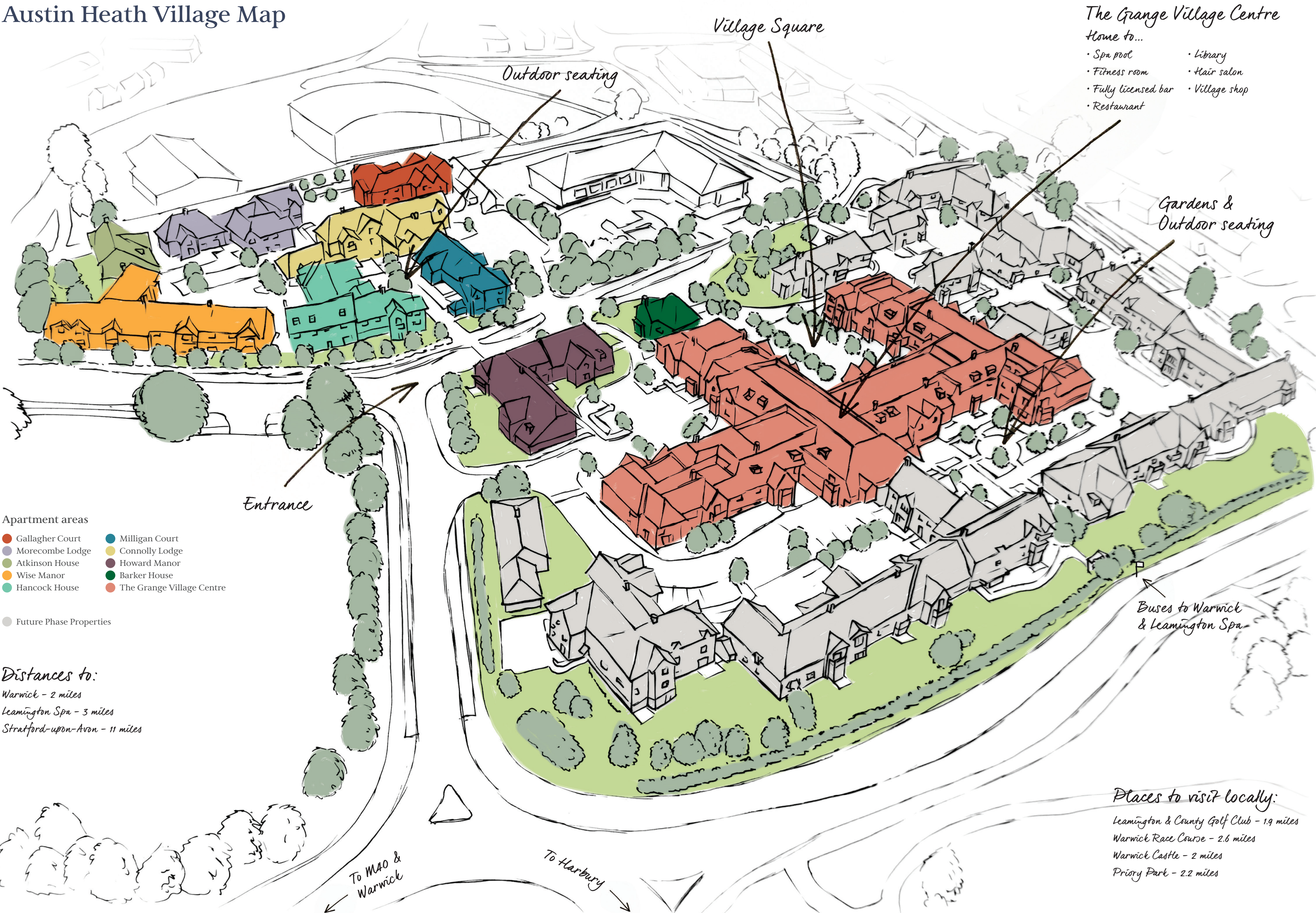
Ask a Village Adviser for more detailed cottage and apartment plans.

All layouts/ dimensions are for illustrative purposes only. Maximum distances shown.





# Austin Heath Village Map



## Apartment areas

- Gallagher Court
- Morecombe Lodge
- Atkinson House
- Wise Manor
- Hancock House
- Milligan Court
- Connolly Lodge
- Howard Manor
- Barker House
- The Grange Village Centre

Future Phase Properties

## Distances to:

- Warwick - 2 miles
- Leamington Spa - 3 miles
- Stratford-upon-Avon - 11 miles

## Places to visit locally:

- Leamington & County Golf Club - 1.9 miles
- Warwick Race Course - 2.6 miles
- Warwick Castle - 2 miles
- Priory Park - 2.2 miles



[www.austinheath.co.uk](http://www.austinheath.co.uk)

**T: 01926 334 201**

**E: [info@austinheath.co.uk](mailto:info@austinheath.co.uk)**

2 The Grange, Gallagher Square,  
Warwick, CV34 6NL

Follow us on     



Proud Partners

Warwick Gates LLP  
Registered address: One Coleman Street, London EC2R 5AA  
Registered in England and Wales; Company number OC394604

**Austin Heath**  
*Inspired* in Warwick



**RETIREMENT  
LIVING OPERATOR  
OF THE YEAR**

**HealthInvestor  
Awards 2019  
WINNER**  
Property investor of the year

