



Well-being.

Reassured
Supported
Empowered

Austin Heath
Inspired in Warwick

Just imagine the support you need, in your own home.



You don't want to give up your independence. And you don't need to.

Austin Heath is a place where age matters less, where you can enjoy an engaged and active lifestyle. We all want to remain independent and we want to support our residents to do just that. The village environment actively helps to encourage well-being, through the social activities, clubhouse facilities, wellness centre and the accessibility and ease of each home.

The village 'Well-being Navigator'

A key member of the village team is the 'Well-being Navigator'. They are on hand, as and when you may need some advice or support. Their role is to get to know residents, to bring together their circle of support. They encourage social activity and help residents get out and about, to enable them to retain their independence for as long as possible.

Everyone is different and their preferences and needs are different too, and in time, many of us will require additional personal care and support to help us maintain a good standard of life. Austin Heath, together with the Well-being Navigator aims to provide a 'flexible care environment' that provides just the right amount of help and support you need; for now and in the future.

“
Far from being a last resort, properly planned care and support in a place like Austin Heath really can lead to a new lease of life. We continually see quite amazing improvements in people's health, confidence and independence, allowing them to embrace all the new lifestyle opportunities in and around the village.
”

Bluebird Care
(Stratford and Warwick)



TAILOR-MADE SURROUNDINGS

Just imagine a home with
your needs in mind...

Everything here is designed to meet the changing needs of older people, with on-site care teams and luxurious properties that can be discreetly fitted with the latest technology to support your well-being.

Whether it's the support services or the carefully designed homes and wellness club facilities, they're all combined to create a made-to-measure environment to help our residents live independently.



PERSONAL CARE PLANS

Just imagine care as unique as you are...

At Austin Heath you'll find the full spectrum of care and support, from day-to-day domestic help through to help with personal care*. But despite the flexibility of our care, two things remain unmoved: choice and control. Firmly fixed in the hands of you and your family.

Your personal care plan can be customised in endless ways, always bespoke to you and changeable. The purpose is simple: to provide the most suitable support that will improve your health and independence, whilst offering reassurance to you and your loved ones.

*Day-to-day care and personal care provided by a qualified external third party provider. Separate charges apply.

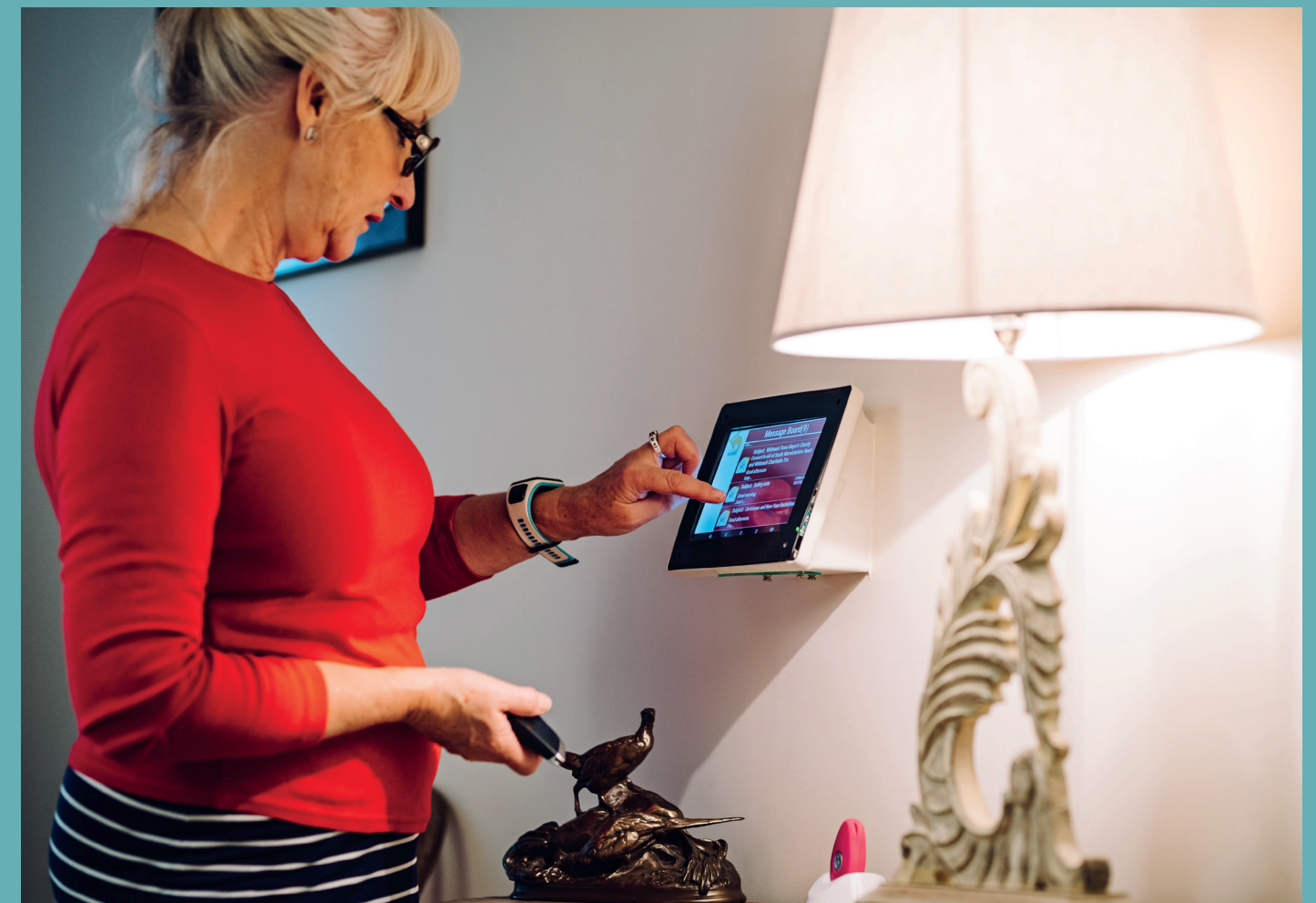


CARE & SUPPORT TECHNOLOGY

Just imagine the reassurance...

You might never notice or need it, but behind the stylish surroundings at Austin Heath is the invisible reassurance of our assistive care and support technology.

Each apartment can be customised to incorporate the latest systems that provide real-time, 24-hour monitoring and visual communication.



Some of the quotes and images in this brochure are used for marketing purposes.

Inspired Villages

The *best* years of your life?

www.austinheath.co.uk

T: 01926 334 201

E: sales.austinheath@inspiredvillages.co.uk

1 The Grange, Gallagher Square,
Warwick, CV34 6AF

Follow us on     

In proud partnership with 

Warwick Gates LLP
Registered address: One Coleman Street, London EC2R 5AA
Registered in England and Wales: Company number OC394604

Austin Heath

Inspired in Warwick



**RETIREMENT
LIVING OPERATOR
OF THE YEAR**

**HealthInvestor
Awards 2019** 
WINNER
Property investor of the year

