



# REDCLIFFE MEWS

LONDON SW10



A delightful two bedroom, two bathroom maisonette with its own entrance nestled in the quiet, cobbled enclave of Redcliffe Mews, a charming road renowned as one of the prettiest and most sought after Mews' in SW10.

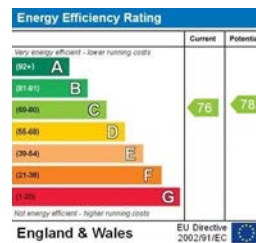
Situated with easy access to Fulham Road, Hollywood Road, Old Brompton Road and Earl's Court, Redcliffe Mews is an idyllic residential street which lies within the Boltons Conservation Area of Chelsea.

PRINCIPAL BEDROOM WITH ENSUITE BATHROOM ■ FURTHER DOUBLE BEDROOM  
SHOWER ROOM ■ KITCHEN RECEPTION ROOM ■ LONG LEASE PLUS SHARE OF FREEHOLD

**PRICE**  
£1,275,000

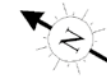
**TENURE**  
Share of Freehold with 974 Years Remaining

**SERVICE CHARGE**  
Approx £1,865 per annum

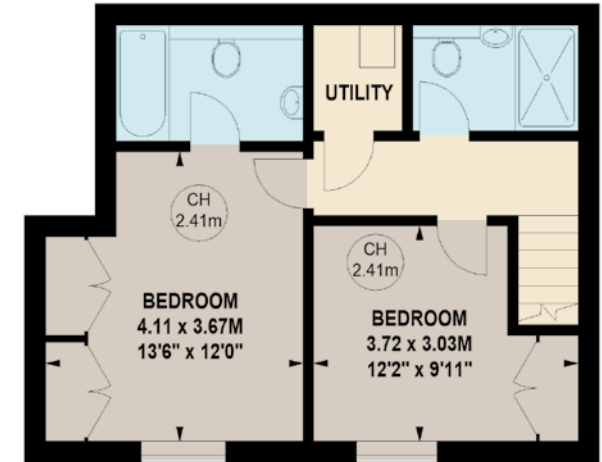


These details have been prepared for general guidance only and should not be relied upon by prospective purchaser/ tenants who before proceeding must check and otherwise satisfy themselves as to the property and the nature, state and availability of any facility or service.

[www.nicolasvanpatrick.com](http://www.nicolasvanpatrick.com)



APPROX. GROSS INTERNAL FLOOR AREA  
855 SQ FT / 79.43 SQ M



Key :  
CH - Ceiling Height

This floorplan is for GUIDANCE ONLY and NOT FOR VALUATION purposes.