

EGERTON GARDENS
LONDON SW3

A BRIGHT AND CONTEMPORARY
THREE/FOUR BEDROOM GROUND
FLOOR MAISONNETTE SITUATED IN
THIS PREMIER KNIGHTSBRIDGE
ADDRESS



This beautifully presented flat with its flexible accommodation has views over the communal garden from the reception room and access to a private terrace and patio to the rear.

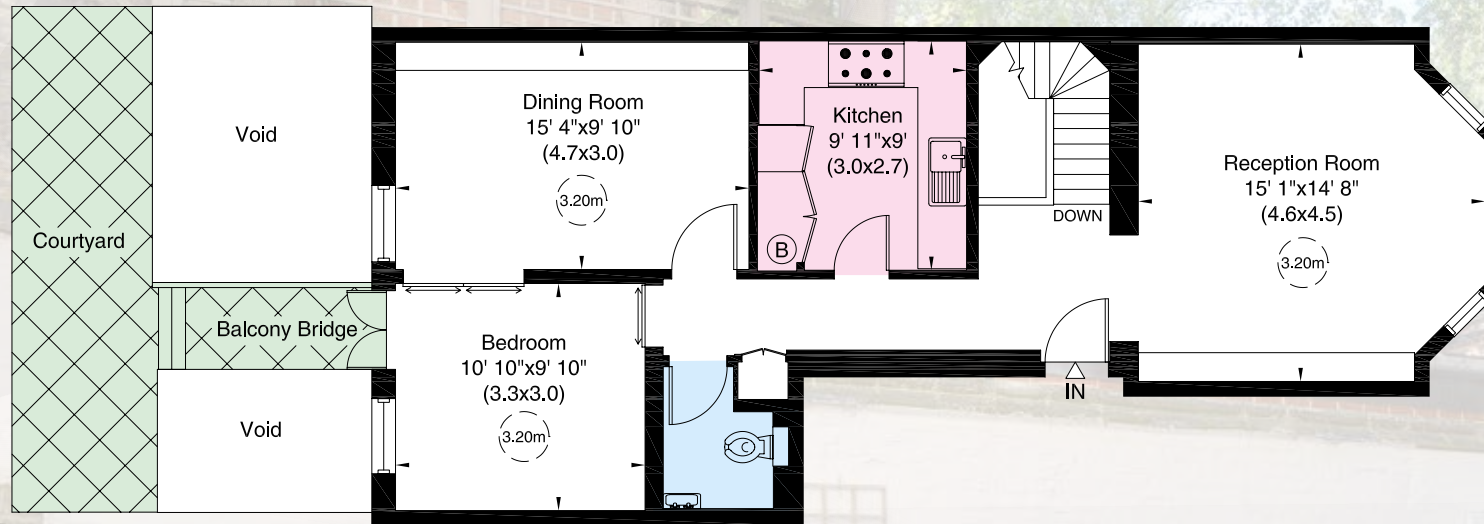


Egerton Gardens is a short walk to Brompton Cross, Harrods and all the excellent shopping and restaurants that Knightsbridge has to offer.

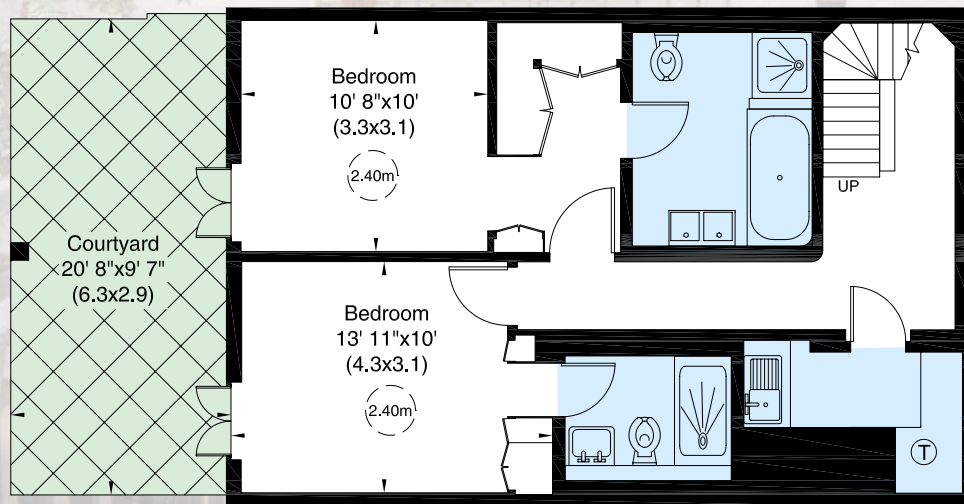
3 Bedrooms | 2 Receptions | 2 Bathrooms | Kitchen | Guest Cloakroom
Utility Room | Terrace & Patio | Access to Communal Gardens



128 SQ M / 1,375 SQ FT



RAISED GROUND FLOOR



LOWER GROUND FLOOR

These details have been prepared for general guidance only and should not be relied upon by prospective purchaser/tenants who before proceeding must check and otherwise satisfy themselves as to the property and the nature, state and availability of any facility or service. 360916

Brochure, Photography and Floor plan by **capital group** 020 8671 5448

Terms:

Guide Price: £2,650,000

Leasehold: 82 years remaining

Service Charge: TBA

Ground Rent: TBA

EPC: C



NVP
NICOLAS VAN PATRICK
INCORPORATING
HOBART SLATER 

6-8 MONTEPELIER STREET,
LONDON SW7 1EZ
+44 (0)20 7581 8277
sales@nicolasvanpatrick.com
www.nicolasvanpatrick.com