

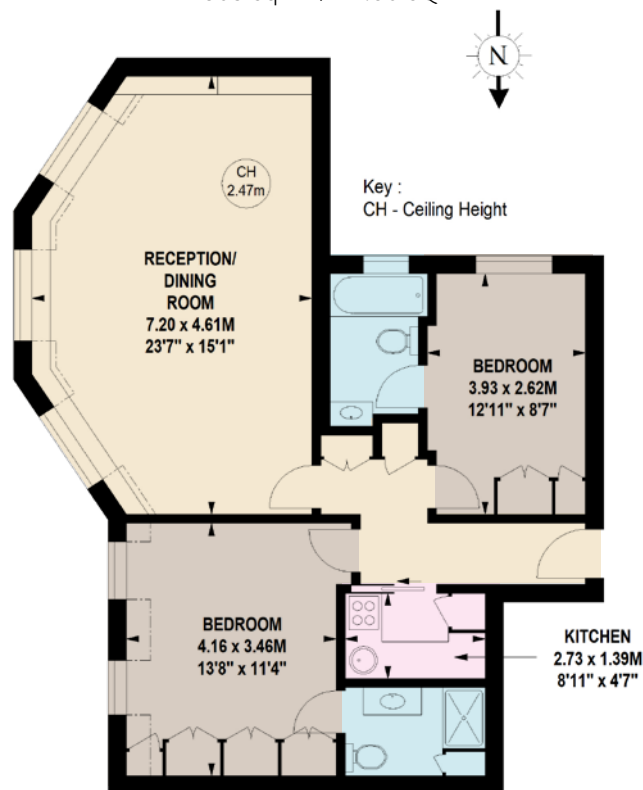


PRINCE'S
GATE

SOUTH KENSINGTON SW7

APPROX. GROSS INTERNAL AREA

803 Sq FT / 74.60 SQ M



FOURTH FLOOR

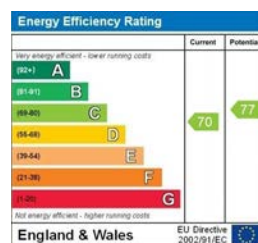
This floorplan is for GUIDANCE ONLY and NOT FOR VALUATION purposes.

FEATURES

Two Double Bedrooms with Ensuite Bathrooms
Reception Room ■ Kitchen
Lift ■ Caretaker

Offering spectacular far reaching views of the City skyline and over Prince's Gate Mews, this recently refurbished two bedroom and two bathroom flat is situated on the fourth floor (with lift). The property is held on a long lease of c.957 years and is located within a white stucco fronted period building with a caretaker, which was completely rebuilt behind the original facade

69-70 Prince's Gate sits in the southern end of Princes Gate, ideally situated between the open spaces of Hyde Park and the world class museums at South Kensington and Knightsbridge. The property has easy access to public transport with South Kensington Station (District Circle and Piccadilly lines) a short walk away.



PRICE £1,395,000

TENURE Leasehold With 957 Years Remaining

SERVICE CHARGE Approx £9,336 includes sinking fund

These details have been prepared for general guidance only and should not be relied upon by prospective purchaser/ tenants who before proceeding must check and otherwise satisfy themselves as to the property and the nature, state and availability of any facility or service.



www.nicolasvanpatrick.com