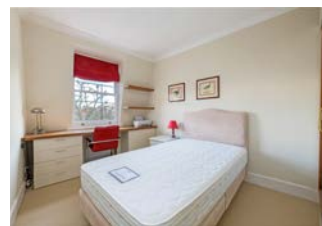
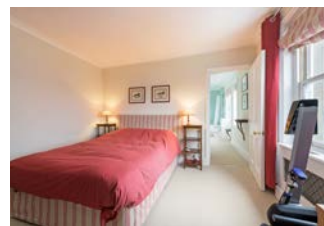


LENNOX GARDENS

KNIGHTSBRIDGE SW1X



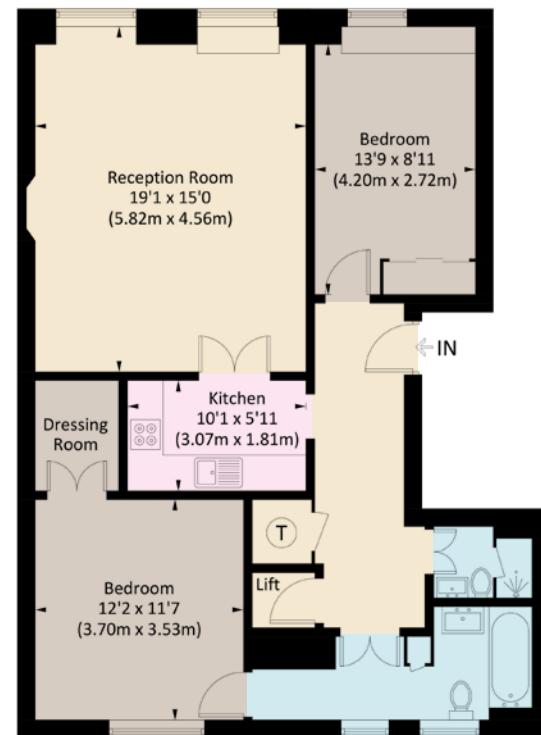


TWO BEDROOMS • TWO BATHROOMS • RECEPTION ROOM • KITCHEN
DIRECT LIFT ACCESS • ACCESS TO COMMUNAL GARDENS

An elegant and well-appointed two-bedroom, two-bathroom apartment situated on the fourth floor of a distinguished building in the heart of Knightsbridge, featuring direct lift access. This charming residence offers a beautifully proportioned drawing room with picturesque views overlooking the tranquil communal garden square at the front. To the rear, the property enjoys expansive, open west-facing vistas across the rooftops, allowing for an abundance of natural light and captivating sunsets over some of London's most distinguished landmarks.

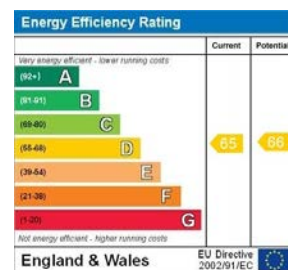
PRICE: £1,750,000
TENURE: LEASEHOLD WITH
166 YEARS REMAINING
SERVICE CHARGE: APPROX
£4,800 PER ANNUM

APPROX. GROSS INTERNAL AREA
912 SQ. FT. / 84.8 SQ. M.



TOP FLOOR

This floorplan is for GUIDANCE ONLY
and NOT FOR VALUATION purposes.



www.nicolasvanpatrick.com

These details have been prepared for general guidance only and should not be relied upon by prospective purchaser/ tenants who before proceeding must check and otherwise satisfy themselves as to the property and the nature, state and availability of any facility or service.