

HANS PLACE

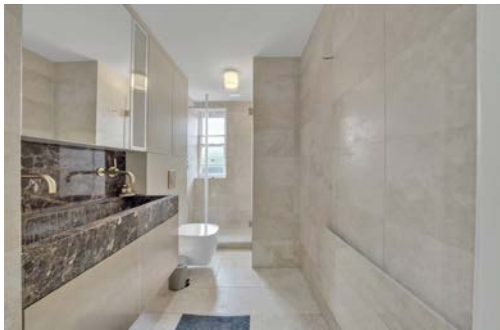
KNIGHTSBRIDGE SW1X



This beautifully presented two bedroom flat is situated on the top floor of an elegant period conversion.

The property has been refurbished to a high standard and benefits from air conditioning and access to the stunning communal gardens.

Hans place is superbly located in the heart of Knightsbridge, moments away from Harrods. It is also ideally situated for the variety of shops and restaurants in Knightsbridge and on Sloane Street. Chelsea, South Kensington and Hyde Park are also within close proximity.



Features

- TWO DOUBLE BEDROOMS • TWO BATHROOMS • WALK IN WARDROBE
- RECEPTION ROOM • KITCHEN • AIR CONDITIONING
- NO LIFT • ACCESS TO COMMUNAL GARDENS

APPROXIMATE GROSS INTERNAL AREA
844 Sq. Ft. / 78.43 Sq. M.



FOURTH FLOOR

Energy Efficiency Rating		Current	Potential
Very energy efficient - lower running costs	A		
(81-92)	B		
(69-80)	C		
(55-68)	D		57
(39-54)	E	50	
(21-38)	F		
Not energy efficient - higher running costs	G		

England & Wales EU Directive 2002/91/EC

This floorplan is for GUIDANCE ONLY and NOT FOR VALUATION purposes.

Price: £1,395,000

Tenure: Leasehold With 89 Years Remaining

Service Charge: Approx £6,489.96 per annum

These details have been prepared for general guidance only and should not be relied upon by prospective purchaser/ tenants who before proceeding must check and otherwise satisfy themselves as to the property and the nature, state and availability of any facility or service.

Brochure by TwentyOneFifty Tel: 020 8778 2150



www.nicolasvanpatrick.com