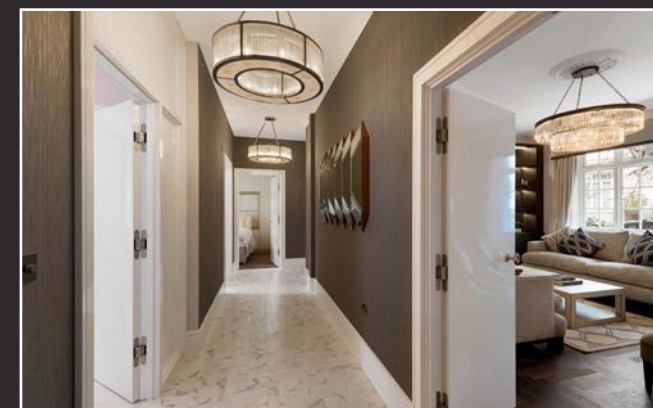


ERESBY HOUSE

KNIGHTSBRIDGE SW7





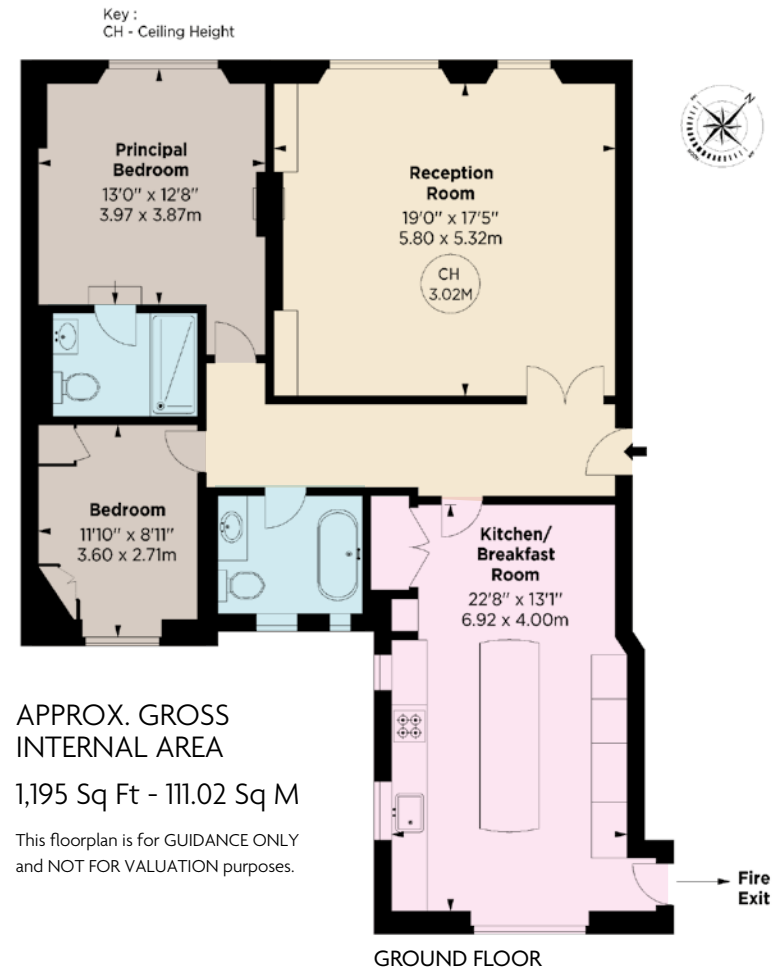
This well-proportioned lateral flat has been meticulously refurbished to a high standard by the current owner. Offering two bedrooms, two bathrooms and a wonderful kitchen dining room the flat is flooded with natural light having an east- west exposure with a defined separation between living and bedroom accommodation. Eresby House is a highly sought after art-deco block in this quiet residential address in Knightsbridge. The building also benefits from having 24-hour portorage .



- Entrance Hall ■ Large Reception Room
- Kitchen & Breakfast Room ■ Principal Bedroom Ensuite
- Second Double Bedroom ■ Separate Bathroom
- 24-Hour Porter ■ Private Storage Room
- Access to Communal Gardens



Price: £2,395,000
Tenure: Leashold with 962 years remaining with share of freehold
Service Charge: £13,244.56 per annum
Ground Rent: Peppercorn



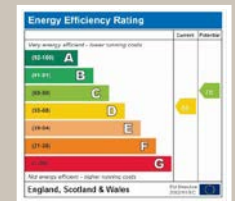
APPROX. GROSS INTERNAL AREA

1,195 Sq Ft - 111.02 Sq M

This floorplan is for GUIDANCE ONLY and NOT FOR VALUATION purposes.

NVP
 INCORPORATING
 HOBART SLATER

6-8 MONTPELIER STREET,
 LONDON SW7 1EZ
 SALES | +44 (0)20 7581 8277
 LETTINGS | +44 (0)20 7590 1200
 info@nicolasvanpatrick.com
 www.nicolasvanpatrick.com



OnTheMarket.com

These details have been prepared for general guidance only and should not be relied upon by prospective purchaser/ tenants who before proceeding must check and otherwise satisfy themselves as to the property and the nature, state and availability of any facility or service.