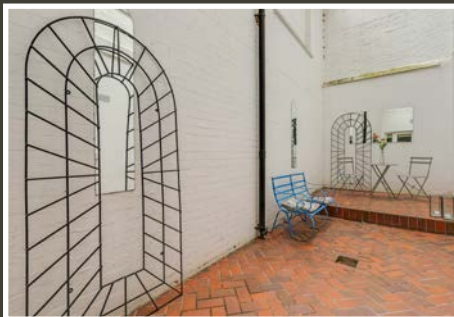




Brompton Square

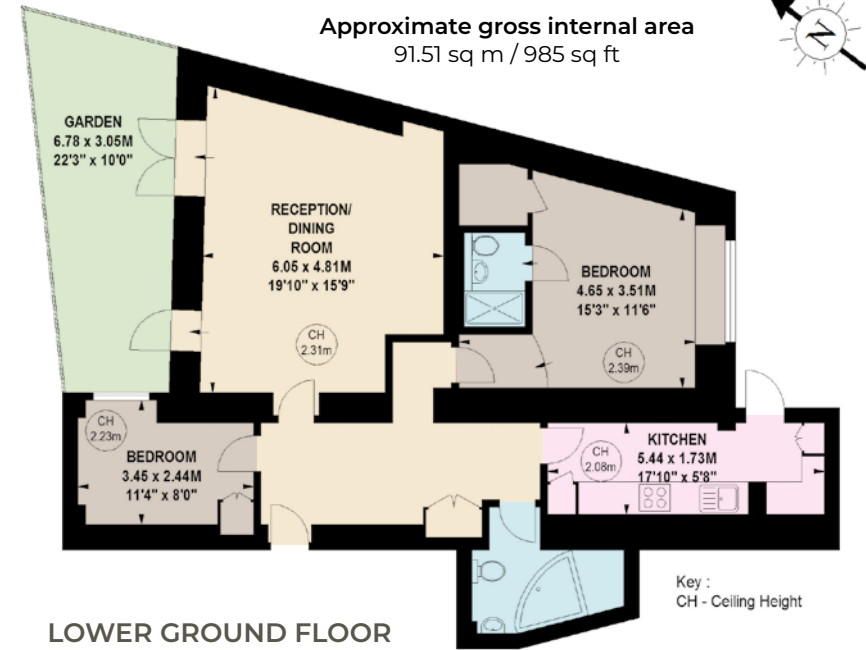
KNIGHTSBRIDGE SW3



Positioned in the quietest corner of this handsome garden square, is this well-presented two bedroom, two bathroom apartment with private patio garden.

With two double bedrooms (one with ensuite shower room), plus an additional family bathroom, fully fitted separate kitchen and generous sitting room/dining room that leads onto a private patio garden, this pleasantly decorated flat makes an ideal home for any incoming buyer.

Brompton Square is a beautiful garden square that sits quietly off Brompton Road, close to the renowned bars, restaurants and amenities of Knightsbridge and South Kensington.

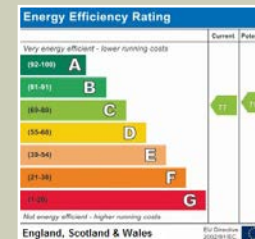


- Principal Bedroom with Ensuite Bathroom ■ Further Double Bedroom
- Bathroom ■ Reception Room ■ Kitchen ■ Private Patio
- Long Lease ■ Access to Communal Garden

Price £1,350,000

Tenure Leasehold with 130 Years Remaining

Service Charge Approx. £3,600 per annum



NVP
NICOLAS VAN PATRICK

6-8 MONTPELIER STREET,
LONDON SW7 1EZ
SALES | +44 (0)20 7581 8277
LETTINGS | +44 (0)20 7590 1200
info@nicolasvanpatrick.com
www.nicolasvanpatrick.com

These details have been prepared for general guidance only and should not be relied upon by prospective purchaser/ tenants who before proceeding must check and otherwise satisfy themselves as to the property and the nature, state and availability of any facility or service.