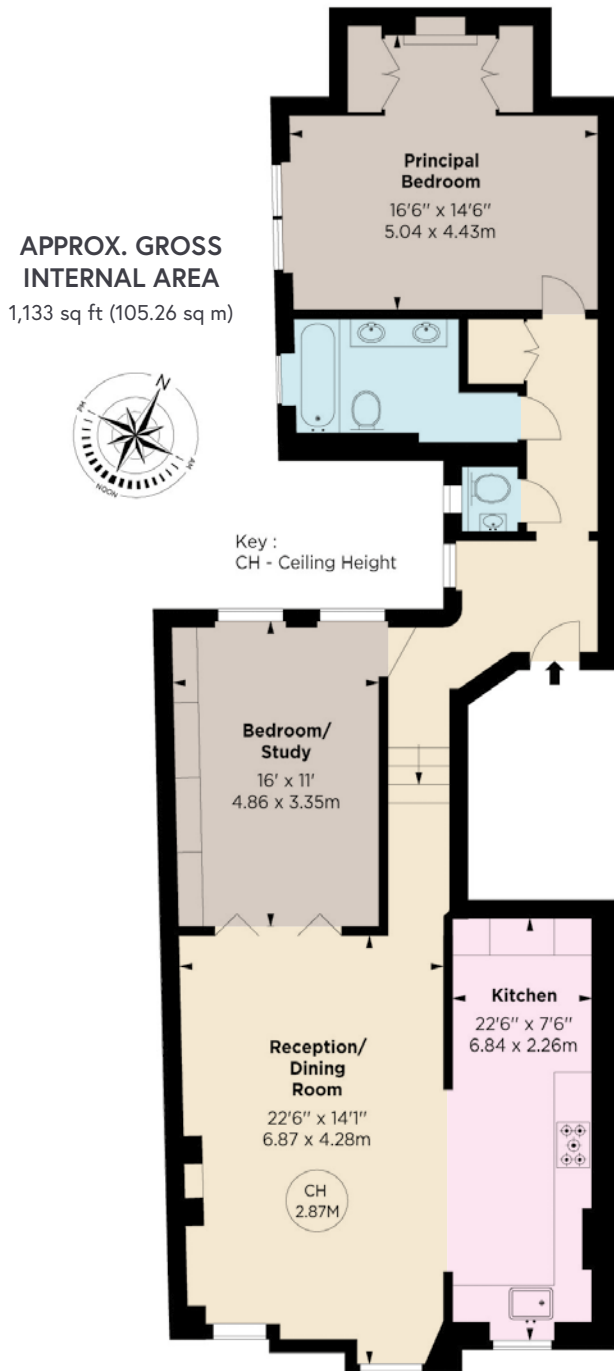




DRAYCOTT PLACE

CHELSEA SW3



THIRD FLOOR

An extremely bright south facing two bedroom apartment situated on the third floor of this fine red brick period building. Immaculately presented, the apartment benefits from spacious and flexible open plan accommodation.



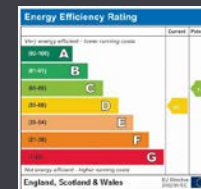
Draycott Place is conveniently situated between Sloane Square and South Kensington being close to the fashionable Kings Road and all the shops restaurants and amenities that the area has to offer.

FEATURES

- Principal Double Bedroom
- Double Bedroom
- Family Bathroom
- Guest WC
- Reception Room
- Kitchen

TERMS

PRICE: £1,725,000
TENURE: LEASEHOLD 136 YEARS REMAINING
SERVICE CHARGE: APPROX £3,000 PER ANNUM



6-8 MONTEPELIER STREET,
 LONDON SW7 1EZ
 SALES | +44 (0)20 7581 8277
 LETTINGS | +44 (0)20 7590 1200
 info@nicolasvanpatrick.com
 www.nicolasvanpatrick.com

These details have been prepared for general guidance only and should not be relied upon by prospective purchaser/ tenants who before proceeding must check and otherwise satisfy themselves as to the property and the nature, state and availability of any facility or service.

Brochure by TwentyOneFifty Tel: 020 8778 2150