



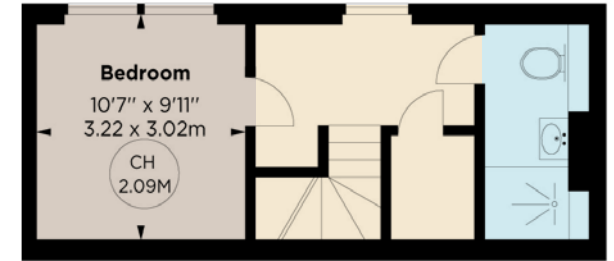
# POND PLACE

CHELSEA SW3



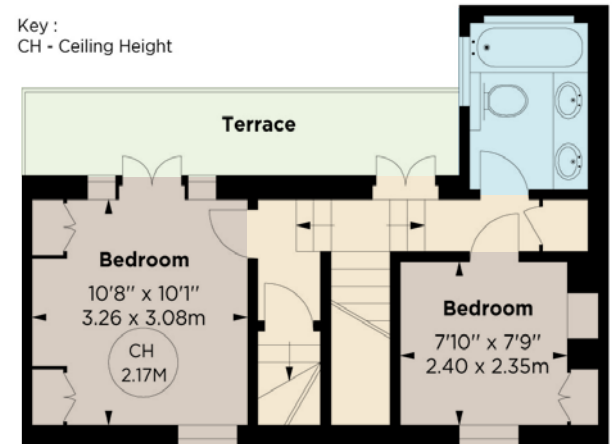


Approximate Gross Internal Area 1,048 sq ft / 97.36 sq m

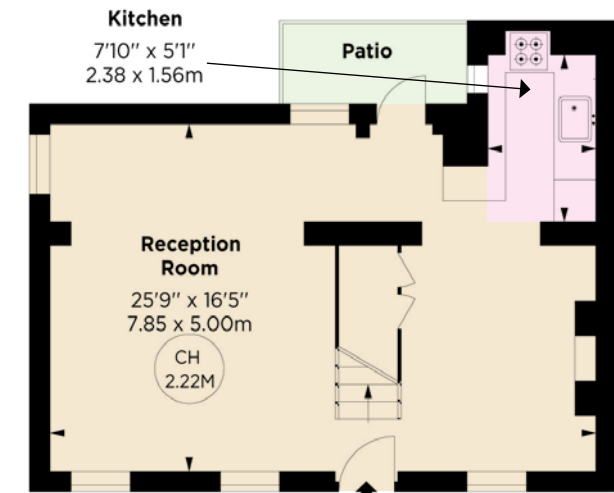


SECOND FLOOR

Key:  
CH - Ceiling Height



FIRST FLOOR



GROUND FLOOR

This floorplan is for GUIDANCE ONLY and NOT FOR VALUATION PURPOSES

A meticulously renovated and extended double fronted, freehold cottage boasting three bedrooms.

This beautiful home has undergone a comprehensive modernization and extension, resulting in an impeccable blend of contemporary design and timeless charm. The ground floor presents a spacious open plan living area, thoughtfully designed with meticulous attention to detail, showcasing opulent finishes and a state-of-the-art kitchen, with wooden flooring throughout. The first floor comprises principal bedroom, additional bedroom, family bathroom and roof terrace. On the top floor there is another double bedroom, shower room and utility.



Pond Place sits quietly off Fulham Road in prime Chelsea, perfectly placed for the world renowned shops, bars and eateries that Chelsea and the surrounding areas has to offer.

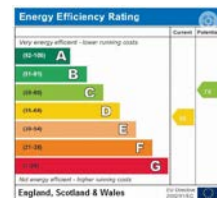
## FEATURES

- Three Bedrooms ■ Two Bathrooms
- Roof Terrace ■ Sitting Room ■ Kitchen Diner

Price: £1,795,000

Tenure: Freehold

These details have been prepared for general guidance only and should not be relied upon by prospective purchaser/ tenants who before proceeding must check and otherwise satisfy themselves as to the property and the nature, state and availability of any facility or service.



6-8 MONTPELIER STREET,  
LONDON SW7 1EZ  
SALES | +44 (0)20 7581 8277  
LETTINGS | +44 (0)20 7590 1200  
[info@nicolasvanpatrick.com](mailto:info@nicolasvanpatrick.com)  
[www.nicolasvanpatrick.com](http://www.nicolasvanpatrick.com)