

BURTON COURT



CHELSEA SW3



IMMACULATELY PRESENTED TWO BEDROOM THIRD FLOOR MANSION FLAT (WITH LIFT), BOASTING OPEN SOUTH WEST VIEWS ACROSS BURTON COURT AND CHRISTOPHER WREN'S ROYAL HOSPITAL.



Burton Court is one of the most renowned portered mansion blocks situated on Franklins Row. The apartment is located moments away from Sloane Square, Burton Court Gardens, as well as all of the famous boutiques, cafes and restaurants that Kings Road, Sloane Square and Duke of York Square have to offer. Local transport links include Sloane Square Underground Station for the district and circle lines (0.3 miles).

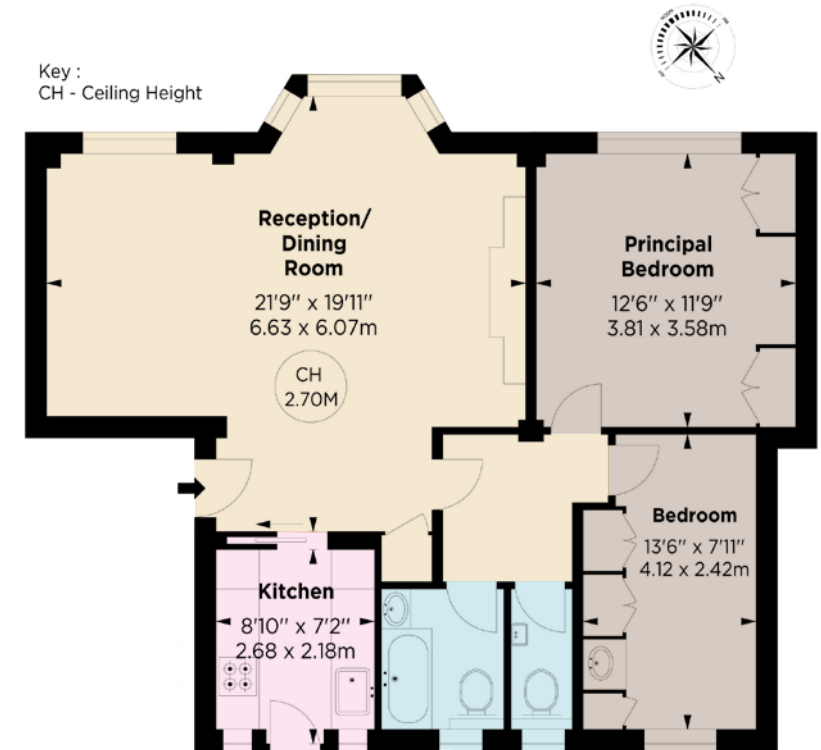


- Share of Freehold With 979 Years Remaining
- Principal Double Bedroom • Further Double Bedroom
- Family Bathroom • Separate WC • Reception Room
- Kitchen • Access To Burton Gardens



APPROX. GROSS INTERNAL AREA - 777 Sq FT (72.18 Sq M)

This floorplan is for GUIDANCE ONLY and NOT FOR VALUATION purposes.



THIRD FLOOR

TERMS

PRICE: £1,625,000

TENURE: Share of Freehold With 979 Years Remaining

SERVICE CHARGE: Approx £7,540 per annum (this includes heating and hot water)

NVP
NICOLAS VAN PATRICK
INCORPORATING
HOBART SLATER

6-8 MONTPELIER STREET,
LONDON SW7 1EZ
SALES | +44 (0)20 7581 8277
LETTINGS | +44 (0)20 7590 1200
info@nicolasvanpatrick.com
www.nicolasvanpatrick.com

Energy Efficiency Rating		Current	Potential
Very energy efficient - lower running costs	(92-100) A		
	(81-91) B		
	(69-80) C		
	(55-68) D		
	(39-54) E		
	(27-38) F		
Not energy efficient - higher running costs	(1-26) G		

England, Scotland & Wales

These details have been prepared for general guidance only and should not be relied upon by prospective purchaser/ tenants who before proceeding must check and otherwise satisfy themselves as to the property and the nature, state and availability of any facility or service.

