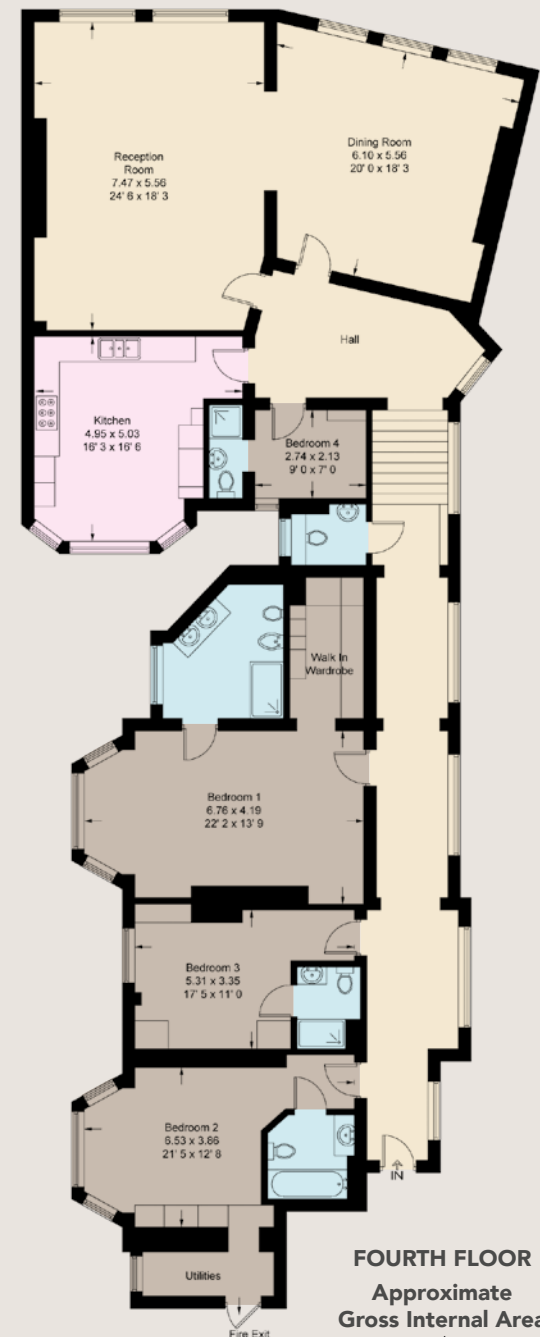


ALBERT COURT

KNIGHTSBRIDGE SW7



Magnificent four bedroom flat comprising 2,863 sq ft on the 4th floor of this most prominent and prestigious Knightsbridge block with 24 hour portage. The flat provides views of Hyde Park and the Albert Memorial from the principal bedrooms. Albert Court is conveniently located to the amenities of Knightsbridge, Kensington and the open spaces of Hyde Park.



FEATURES

- Two Intercommunicating Reception Rooms • Principal Bedroom with Ensuite Shower Room and Dressing Room • Three Further Double Bedroom Suites • Fitted Kitchen/Breakfast Room • Cloakroom • Utility Room • Bose Integrated TV, Hi-Fi Video and DVD System to all Principal Rooms • Independent Heating/Hot Water • Video Entryphone • Lift • 24 Hour Portage • Parking Space Available by Separate Negotiation

PRICE: £6,500,000 | TENURE: SHARE OF FREEHOLD WITH 977 YEARS REMAINING



NICOLAS VAN PATRICK
INCORPORATING
HOBART SLATER

6-8 MONTPELIER STREET,
LONDON SW7 1EZ
SALES | +44 (0)20 7581 8277
LETTINGS | +44 (0)20 7590 1200
info@nicolasvanpatrick.com
www.nicolasvanpatrick.com

OnTheMarket.com



These details have been prepared for general guidance only and should not be relied upon by prospective purchaser/tenants who before proceeding must check and otherwise satisfy themselves as to the property and the nature, state and availability of any facility or service.

This floorplan is for GUIDANCE ONLY and NOT FOR VALUATION purposes.