

AVAILABLE TO LET

TREVOR PLACE KNIGHTSBRIDGE SW7





AVAILABLE TO LET

TREVOR PLACE KNIGHTSBRIDGE SW7



A CHARMING FOUR BEDROOM FAMILY HOUSE OFFERING
EXCELLENT RECEPTION SPACE, AND FLEXIBLE LIVING.



The house has the added bonuses of a study, gym, steam room, wooden floors, air conditioning, and versatile design. The property is neutrally decorated and presented immaculately.



ACCOMMODATION

- Beautiful First Floor Reception Room
- Dining Room & Further Reception
- Eat-In Kitchen
- Large Master Bedroom with En-Suite Bathroom
- 2nd & 3rd Double Bedrooms
- Shower Room
- 4th Bedroom/Family Room with En Suite Bathroom
- Gym with Steam Room
- Storage Vault ■ Safe ■ Study
- Air Conditioning



APPROXIMATE GROSS INTERNAL AREA

2,481 sq ft / 230.4 sq m (Excluding Reduced Headroom)

REDUCED HEADROOM

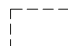
7 sq ft / 0.7 sq m

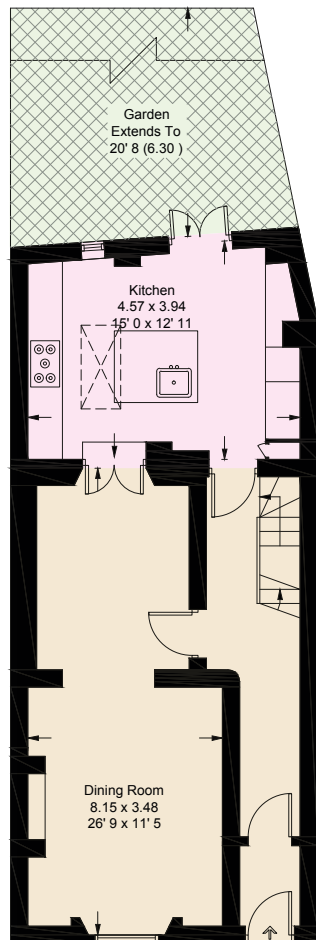
VAULT

50 sq ft / 4.6 sq m

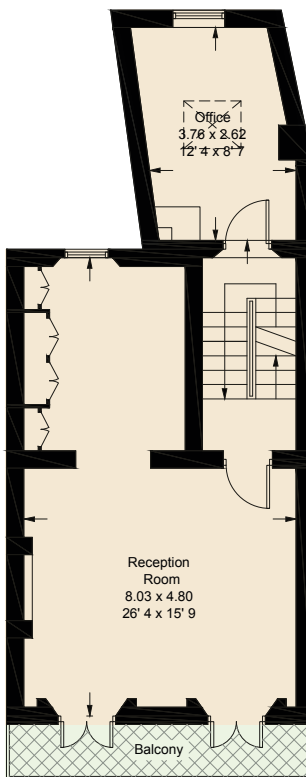
TOTAL

2,538 sq ft / 235.7 sq m

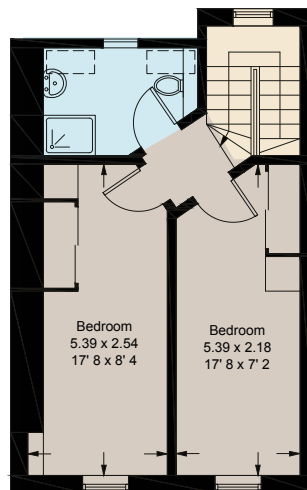
 = Reduced headroom below 1.5m / 5'0"



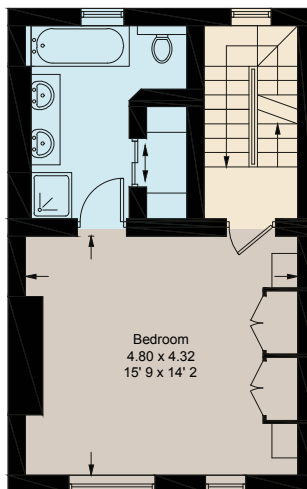
GROUND FLOOR



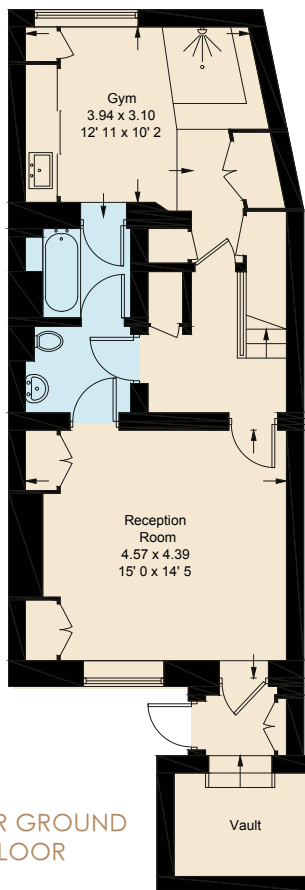
FIRST FLOOR



THIRD FLOOR



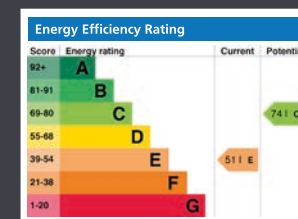
SECOND FLOOR



LOWER GROUND FLOOR



AVAILABLE TO LET
UNFURNISHED



OnTheMarket.com

NVP

NICOLAS VAN PATRICK
INCORPORATING
HOBART SLATER

6-8 MONTPELIER STREET,
LONDON SW7 1EZ
SALES | +44 (0)20 7581 8277
LETTINGS | +44 (0)20 7590 1200
info@nicolasvanpatrick.com
www.nicolasvanpatrick.com

These details have been prepared for general guidance only and should not be relied upon by prospective purchaser/ tenants who before proceeding must check and otherwise satisfy themselves as to the property and the nature, state and availability of any facility or service.