

**FULLY FITTED
PILATES STUDIO
AVAILABLE**

**HOXTON MARKET
N1**

1,167 SQ FT

BELCOR

CITY FRINGE REAL ESTATE



DESCRIPTION

Comprising a fully fitted Pilates studio which has recently undergone refurbishment.

The space been fitted with changing rooms, showers, WC's and brand-new Pilates equipment.

FULLY FITTED PILATES STUDIO IN CLOSE PROXIMITY TO HOXTON SQUARE

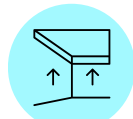
AMENITIES



FULLY FITTED



EXCELLENT
TRANSPORT LINKS



GREAT CEILING HEIGHTS



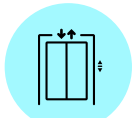
NEWLY REFURBISHED



SELF-CONTAINED



SHOWERS

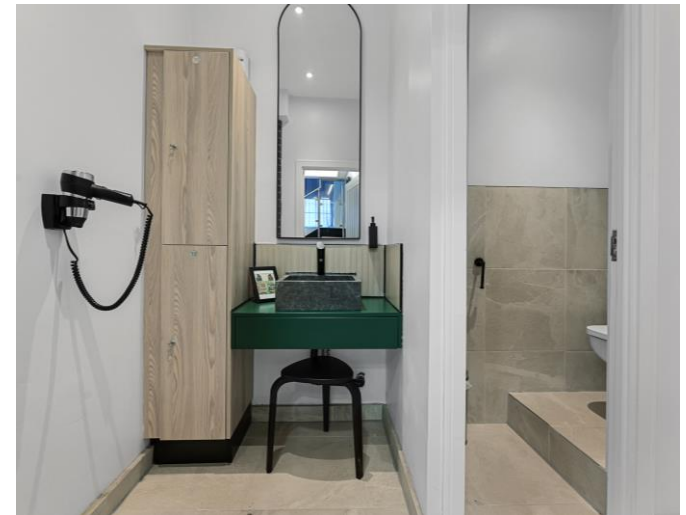


LIFT



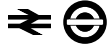
PRIME LOCATION





TRANSPORT

Old Street - 5 mins



Liverpool Street - 14 mins



Shoreditch High Street - 11 mins



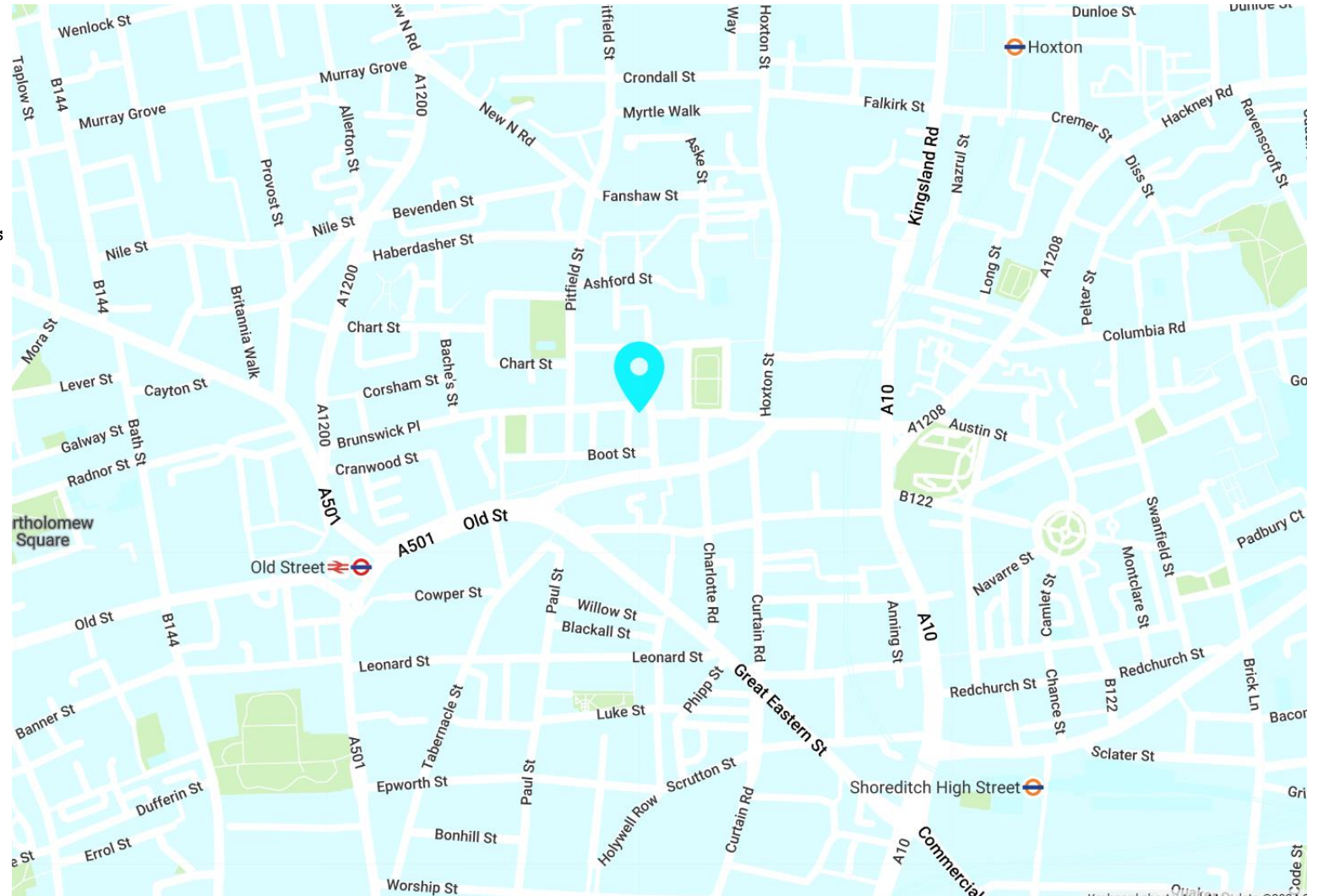
Hoxton - 11 mins



AREA

The building is situated nearby Hoxton Square, one of the most desirable locations in the City Fringe market. The local area is home to several well-known restaurants, bars and shops. The property is well served by local transport amenities. Old Street, Shoreditch High Street and Curtain Road are all in close proximity.

LOCATION



AVAILABILITY

UNIT	SIZE (SQ FT)	STATUS	RENT (PSF)	RATES (PSF)	SERVICE CHARGE (PSF)	TOTAL (PCM)
LG	1,167	Available	£50,000	£8.00	TBC	£4,945

LEASE

A new lease can be granted on terms to be agreed.

TIMING

Available immediately.

CONTENT

View on our website



RATES

The rates given are a guide and Interested parties should make their own enquiries with the local authority.

VAT

VAT is applicable.

VIEWINGS VIA SOLE AGENTS

BELCOR

020 7375 3444
agency@belcor.london
www.belcor.london

TEAM

JAMES DOFFMAN AGENCY



jd@belcor.london
07854 823 137

MARCUS GODFREY AGENCY



mg@belcor.london
07949 990 901

020 7375 3444
www.belcor.london

