

**PENTHOUSE OFFICE
FLOOR**

**THE TRUMAN
BREWERY
SPITALFIELDS
E1**

7,350 SQ FT

BELCOR

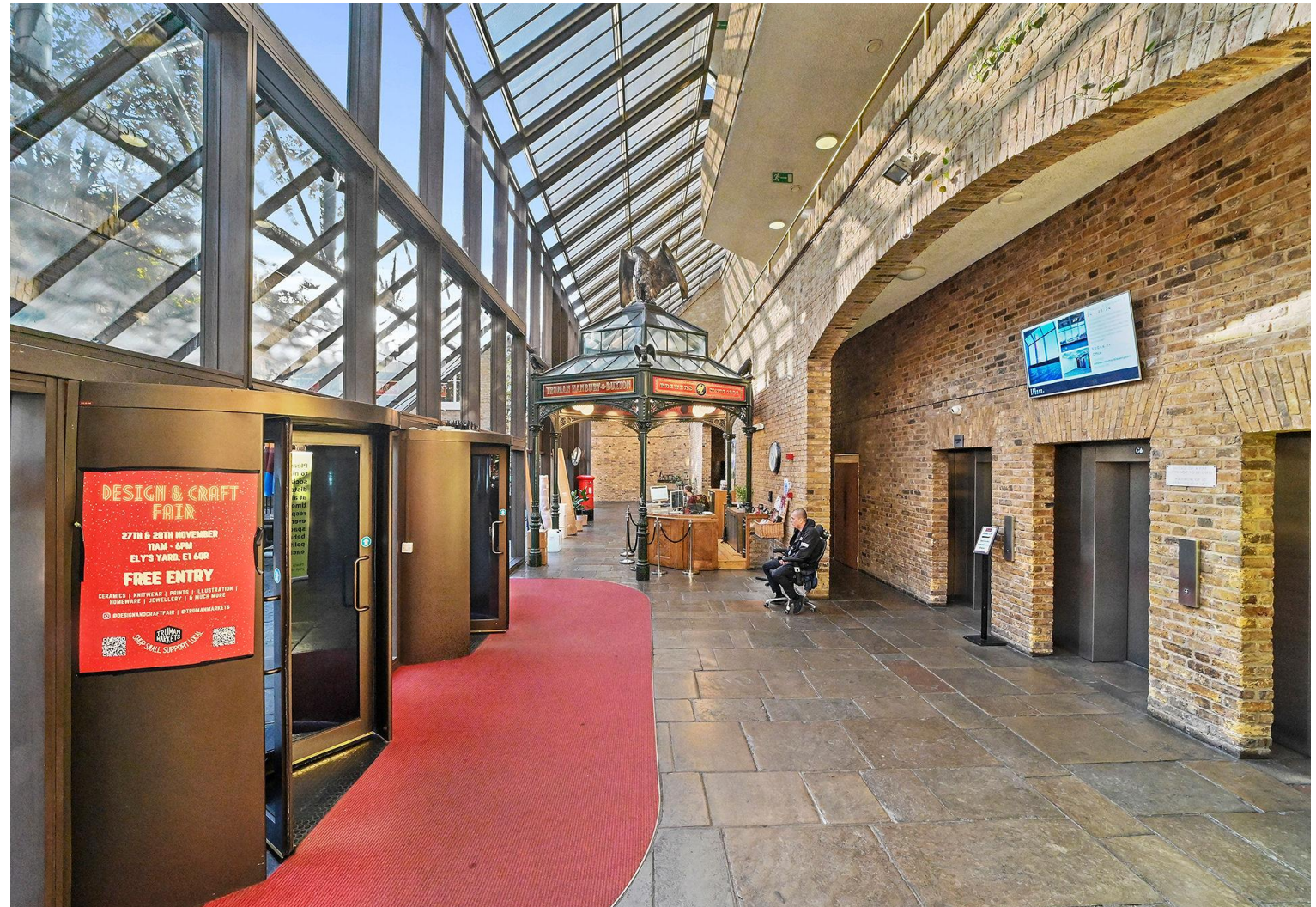
CITY FRINGE REAL ESTATE



DESCRIPTION

Forming part of the Truman Brewery, the penthouse floor within Z Block provides a rare single lateral floor plate with stunning views across the city. The premises provides fully open plan space with floor to ceiling glass providing excellent natural light and is ideally suited to a media, tech or creative occupier.

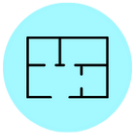
RARE SINGLE LATERAL FLOOR PLATE IN PRIME SPITALFIELDS



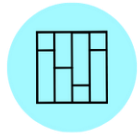
AMENITIES



EXCELLENT NATURAL LIGHT



OPEN PLAN



LATERAL FLOOR PLATE



AIR CONDITIONING



CONCIERGE



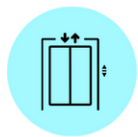
BIKE RACKS



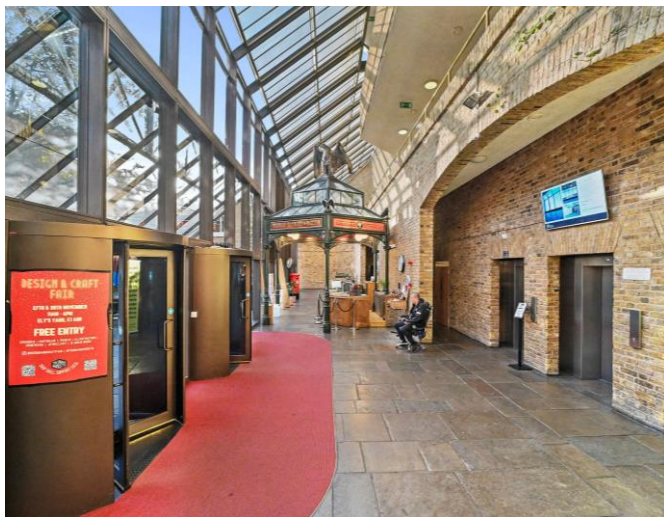
24 HOUR SECURITY



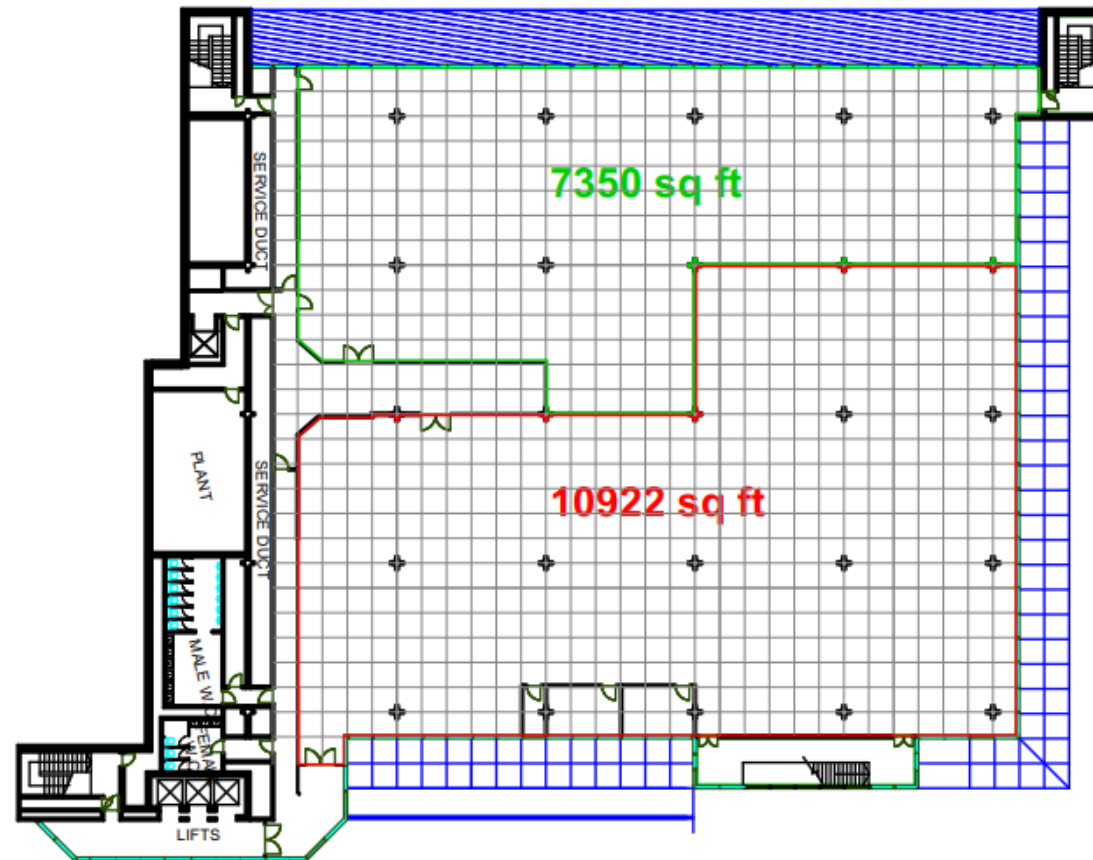
COURTYARD



LIFT



FLOOR PLAN



TRANSPORT

Shoreditch High Street - 5 mins



Liverpool Street - 10 mins



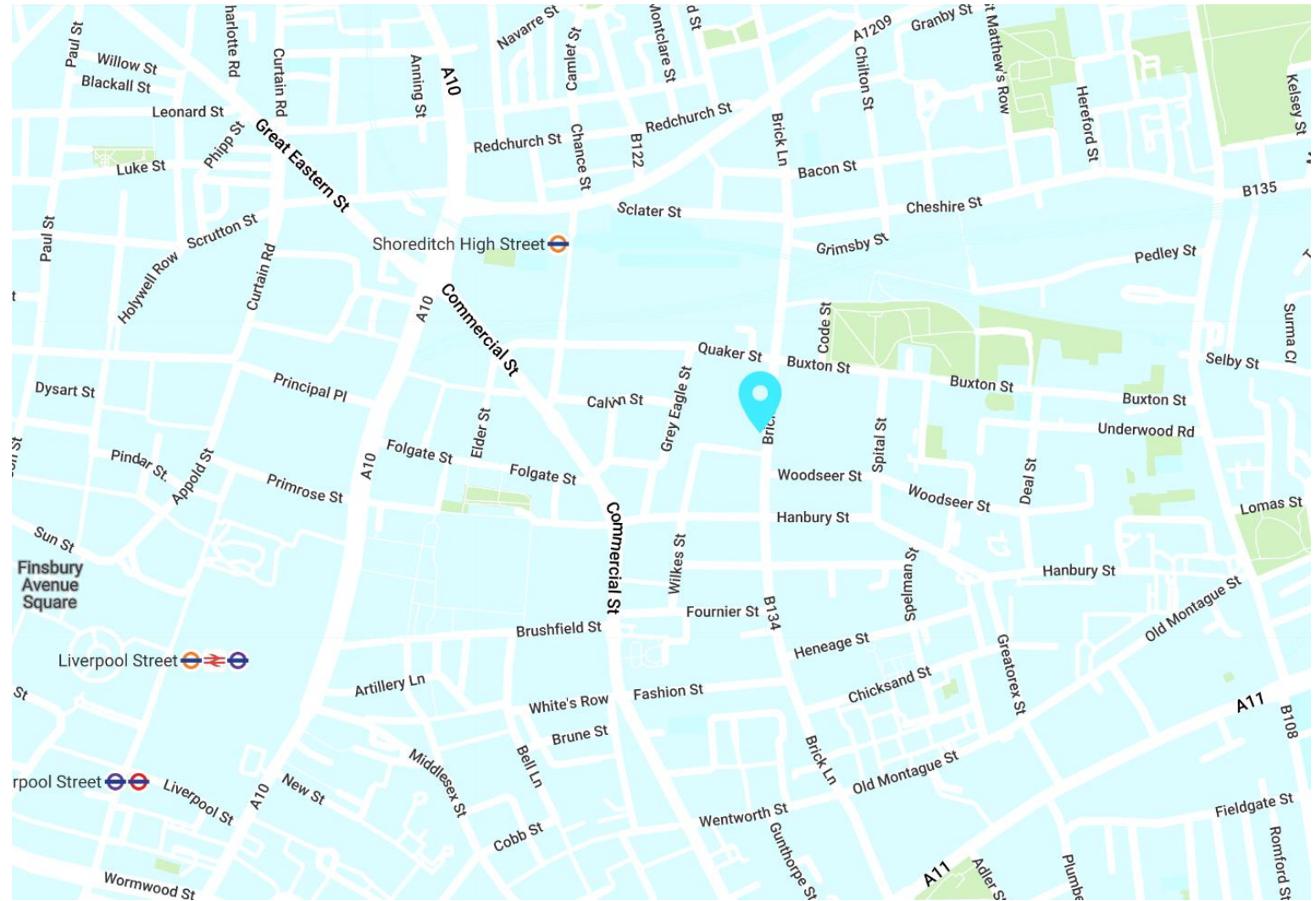
Old Street - 15 mins



AREA

Located in the heart of Spitalfields, the building occupies a prominent position in the centre of Brick Lane which is bustling with culture and is home to some of the world's leading tech and media companies. The area is well served by transport links being a short walk from both Liverpool Street & Shoreditch High Street stations.

LOCATION



AVAILABILITY

UNIT	SIZE (SQ FT)	STATUS	RENT (PSF)	RATES (PSF)	SERVICE CHARGE	TOTAL (PCM)
Part 5 th	7,350	Available	£37.50	£17.00	£5.50	£36,750

LEASE

A new lease to be contracted outside the Landlord & Tenant Act

TIMING

Available immediately

CONTENT

View on our website



RATES

The rates given are a guide and Interested parties should make their own enquiries with the local authority.

VAT

VAT is applicable.

VIEWINGS VIA SOLE JOINT AGENTS

BELCOR

020 7375 3444
agency@belcor.london
www.belcor.london

THOMPSON YATES

020 7626 6060
sthompson@thompsoneyates.co.uk
www.thompsoneyates.co.uk

TEAM

OLI COHEN PARTNER



oc@belcor.london
07740 110 063

JAMES DOFFMAN AGENCY



jd@belcor.london
07854 823 137