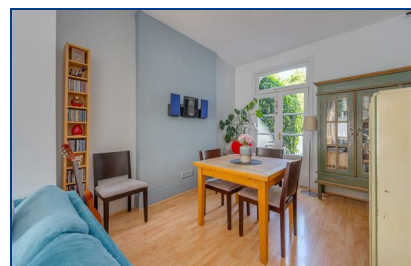




## Fleet Road, , Hampstead, NW3 2QT

**£1,799,950**

A beautifully presented four bedroom Victorian house occupying a prominent end of terrace position, within walking distance of Hampstead Heath. The property offers bright rooms and well planned accommodation throughout, ideal for the growing family. There is a sunny private roof terrace, along with an idyllic patio garden at the rear. Belsize Park station for the Northern Line is a short stroll away, as is the bustling shopping and dining district of South End Green.



- FOUR BEDROOMS
- FAMILY BATHROOM
- CHARMING REAR GARDEN
- COUNCIL TAX BAND G
- DOUBLE RECEPTION
- SHOWER ROOM
- FREEHOLD
- KITCHEN
- PRIVATE TERRACE
- EPC E

