



DAYMORRIS
ESTATE AGENTS
EXPERIENCE THE DIFFERENCE

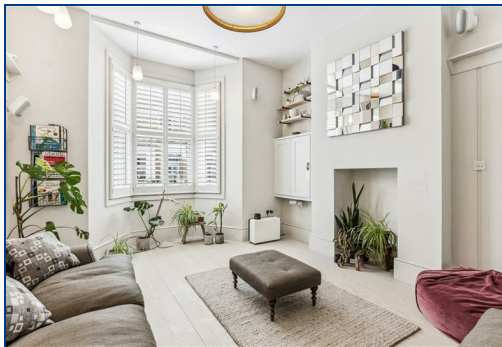
Day Morris Estate Agents

2 Fleet Road, Hampstead, London, NW3 2QS

Tel: 020 7482 4282

Email: sales@daymorris.co.uk

www.daymorris.co.uk



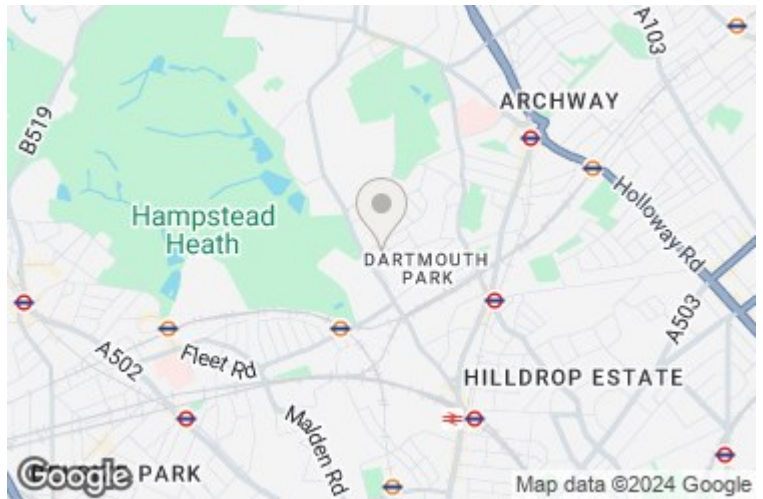
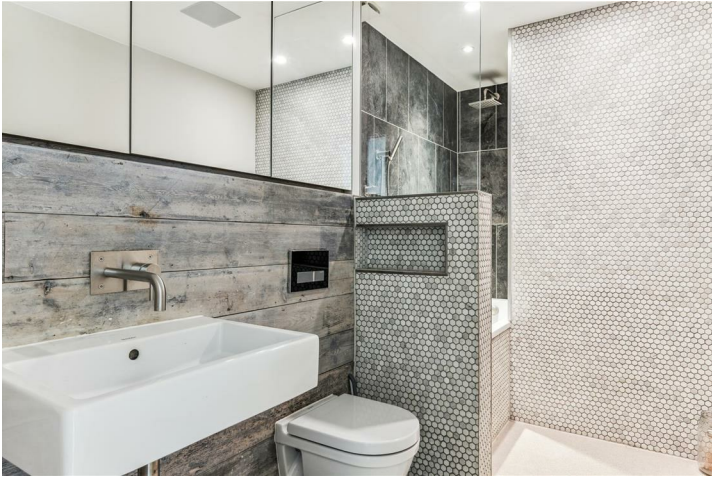
Woodsome Road, Dartmouth Park, NW5 1RY

£2,395,000


A gorgeous mid terrace Victorian house providing five bedrooms, and flexible accommodation for the growing family over four floors. The ground floor reception rooms are tastefully designed, and lead to a wonderful dining room/kitchen, which opens out to a peaceful and secluded rear garden. Natural light flows through the house, and there is also the additional benefit of an attractive roof terrace. Woodsome Road is within the highly desirable area of Dartmouth Park, a short walk from Hampstead Heath, the Lido, and the amenities found on Swain's Lane and York Rise.

- FIVE BEDROOMS
- DOUBLE RECEPTION
- LARGE KITCHEN/DINER
- ONE BATHROOM/TWO SHOWER ROOMS
- GUEST WC
- ROOF TERRACE
- PRIVATE GARDEN
- FREEHOLD
- EPC C
- RESIDENTS PERMIT PARKING





Energy Efficiency Rating

	Current	Potential
<i>Very energy efficient - lower running costs</i>		
(92 plus) A		
(81-91) B		
(69-80) C		
(55-68) D		
(39-54) E		
(21-38) F		
(1-20) G		
<i>Not energy efficient - higher running costs</i>		
England & Wales	EU Directive 2002/91/EC	

77 → 84

Environmental Impact (CO₂) Rating

	Current	Potential
<i>Very environmentally friendly - lower CO₂ emissions</i>		
(92 plus) A		
(81-91) B		
(69-80) C		
(55-68) D		
(39-54) E		
(21-38) F		
(1-20) G		
<i>Not environmentally friendly - higher CO₂ emissions</i>		
England & Wales	EU Directive 2002/91/EC	