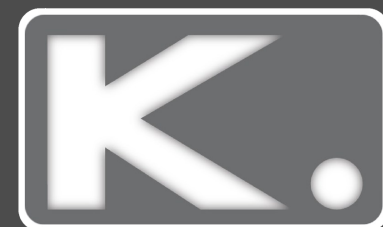


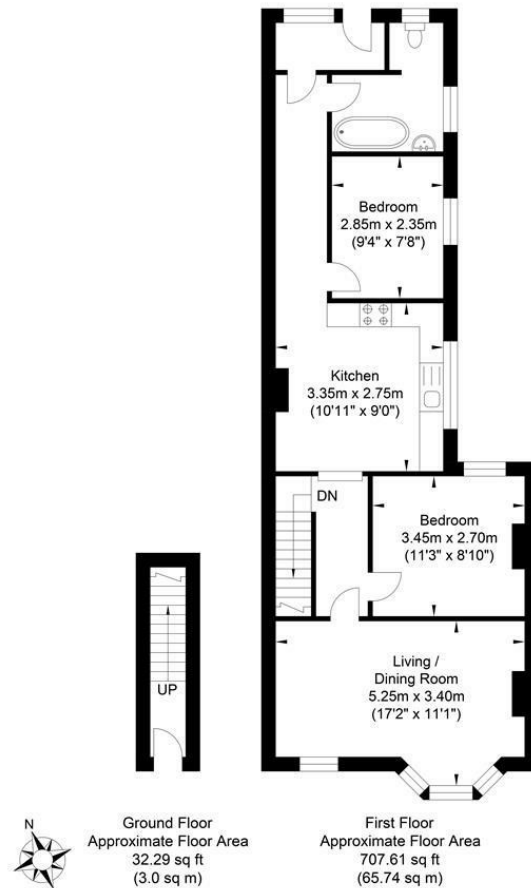


**2 Bed  
Apartment  
located in**

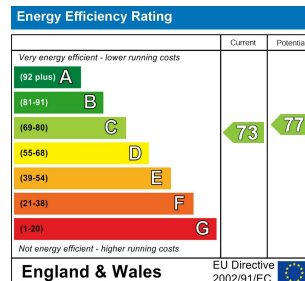
**£300,000**



## Bear Road, Brighton



Approximate Gross Internal Area = 68.74 sq m / 739.91 sq ft  
Illustration for identification purposes only, measurements are approximate, not to scale.



## DIRECTIONS

## CONTACT

Kendrick Property Services - Brighton  
10-12 Lewes Road  
Brighton  
East Sussex  
BN2 3HP

E:  
[sales@kendrickpropertyservices.co.uk](mailto:sales@kendrickpropertyservices.co.uk)  
T: 01273 600162  
[www.kendrickpropertyservices.co.uk](http://www.kendrickpropertyservices.co.uk)

