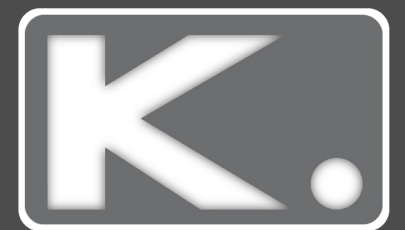


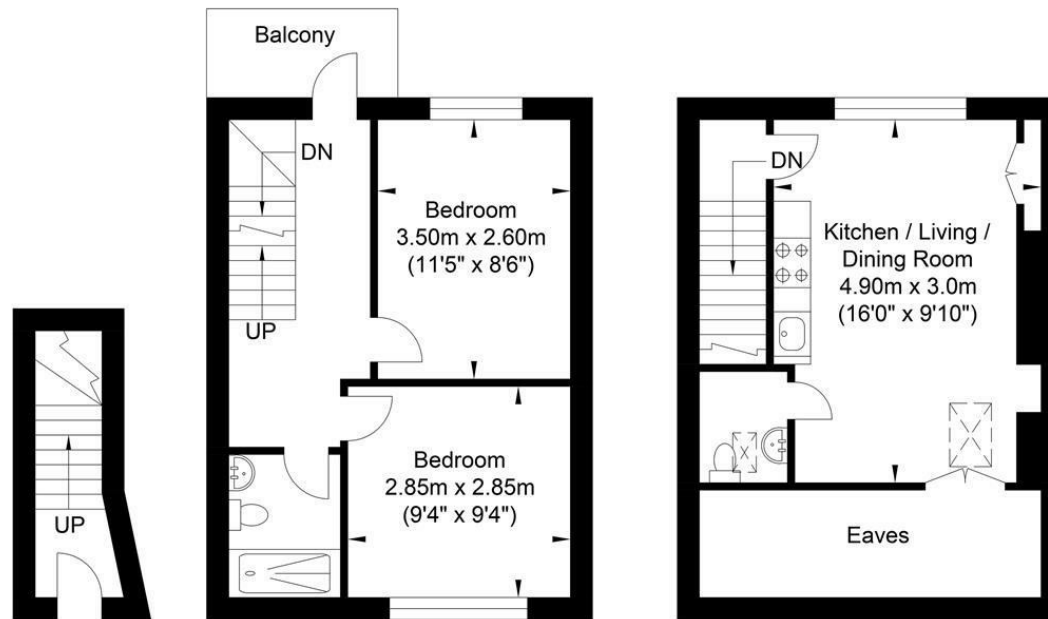


**2 Bed
Maisonette
located in**

Offers Over £415,000



St Martins Street, Brighton



Approximate Gross Internal Area (Excluding Eaves) = 55.78 sq m / 600.41 sq ft
Illustration for identification purposes only, measurements are approximate, not to scale.

DIRECTIONS

CONTACT

Kendrick Property Services - Brighton
10-12 Lewes Road
Brighton
East Sussex
BN2 3HP

E:
sales@kendrickpropertyservices.co.uk
T: 01273 600162
www.kendrickpropertyservices.co.uk

| Energy Efficiency Rating | | |
|---|---------|-----------|
| | Current | Potential |
| Very energy efficient - lower running costs | | |
| (92 plus) A | | |
| (81-91) B | | |
| (69-80) C | 75 | 79 |
| (55-68) D | | |
| (39-54) E | | |
| (21-38) F | | |
| (1-20) G | | |
| Not energy efficient - higher running costs | | |
| EU Directive 2002/91/EC | | |
| England & Wales | | |

