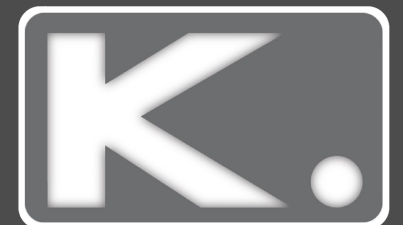




**2 Bed
House - Terraced
located in**

Price Guide £300,000



295 Bear Road
Brighton
BN2 4DD



2



1



1

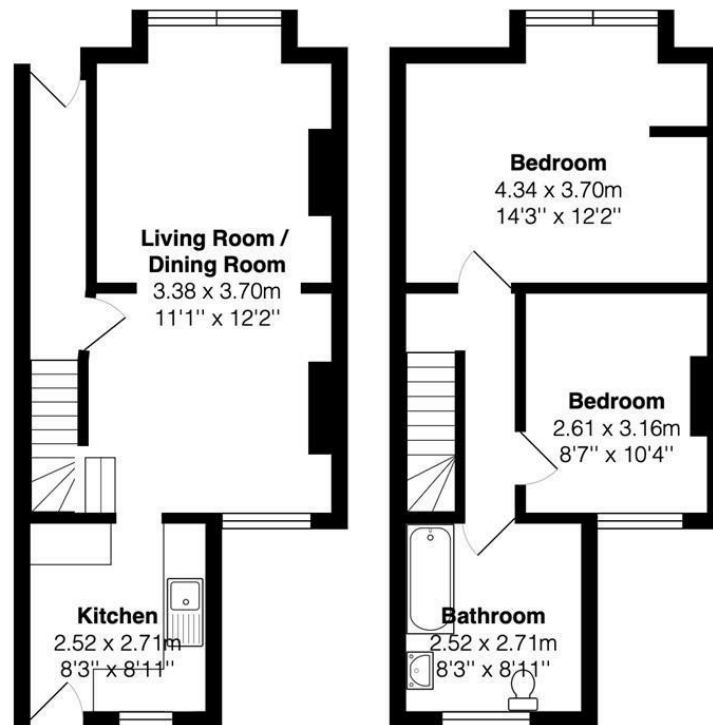


D





295 Bear Road, Brighton, BN2 4DD



Ground Floor
Area: 36.2 m² ... 389 ft²

First Floor
Area: 36.4 m² ... 392 ft²

Total Area: 72.5 m² ... 781 ft²

All measurements are approximate and for display purposes only

DIRECTIONS

CONTACT

Kendrick Property Services - Brighton
10-12 Lewes Road
Brighton
East Sussex
BN2 3HP
E:
sales@kendrickpropertyservices.co.uk
T: 01273 600162
www.kendrickpropertyservices.co.uk

