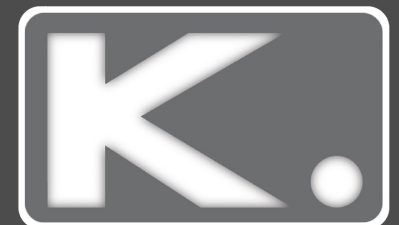


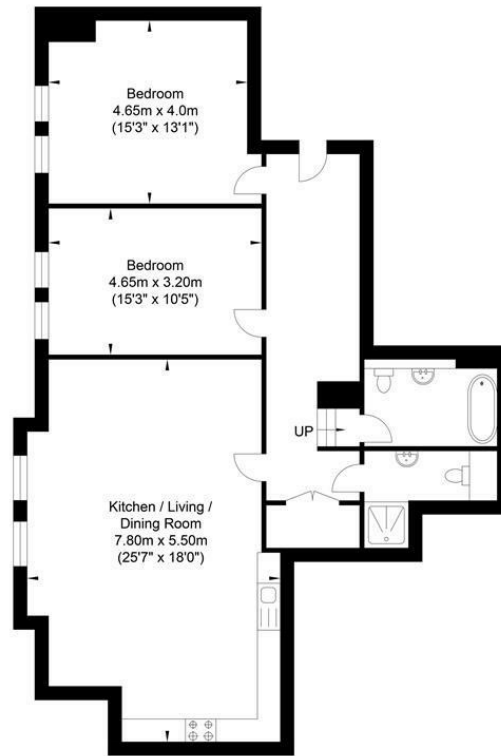


**2 Bed  
Apartment  
located in Hove**

Price Guide £450,000



## Hove Street, Hove



Approximate Floor Area  
1106.53 sq ft  
(102.80 sq m)

Approximate Gross Internal Area = 102.80 sq m / 1106.53 sq ft  
Illustration for identification purposes only, measurements are approximate, not to scale.

### DIRECTIONS

### CONTACT

Kendrick Property Services - Brighton  
10-12 Lewes Road  
Brighton  
East Sussex  
BN2 3HP

E:  
[lettings@kendrickpropertyservices.co.uk](mailto:lettings@kendrickpropertyservices.co.uk)  
T: 01273 699600  
[www.kendrickpropertyservices.co.uk](http://www.kendrickpropertyservices.co.uk)

Energy Efficiency Rating		
	Current	Potential
Very energy efficient - lower running costs		
(92 plus) A		
(81-91) B		
(69-80) C	69	79
(55-68) D		
(39-54) E		
(21-38) F		
(1-20) G		
Not energy efficient - higher running costs		
EU Directive 2002/91/EC		
England & Wales		

