

BAMPFIELD STREET

PORTSLADE



14

12



KENDRICK PROPERTY SERVICES



Kendrick Property Services are delighted to bring to market Bampfield Street, Portslade, a charming location that offers the perfect blend of convenience and coastal living. This delightful 4-bedroom family home boasts a conservatory, adding a touch of elegance and extra living space to the property. Situated near Portslade Station, this home provides easy access to London, making it ideal for commuters or those who enjoy exploring the city. The property is meticulously maintained and beautifully presented throughout, ensuring a warm and inviting atmosphere for you and your family to enjoy. Not only does this home offer a convenient location for travel, but it is also just a stone's throw away from the beach. Imagine leisurely strolls along the shore, picnics with loved ones, and enjoying the calming sound of the waves whenever you desire. Whether you're looking for a peaceful retreat by the sea or a well-connected home for your daily commute, this property in Bampfield Street has it all. Don't miss out on the opportunity to make this lovely house your new home sweet home.



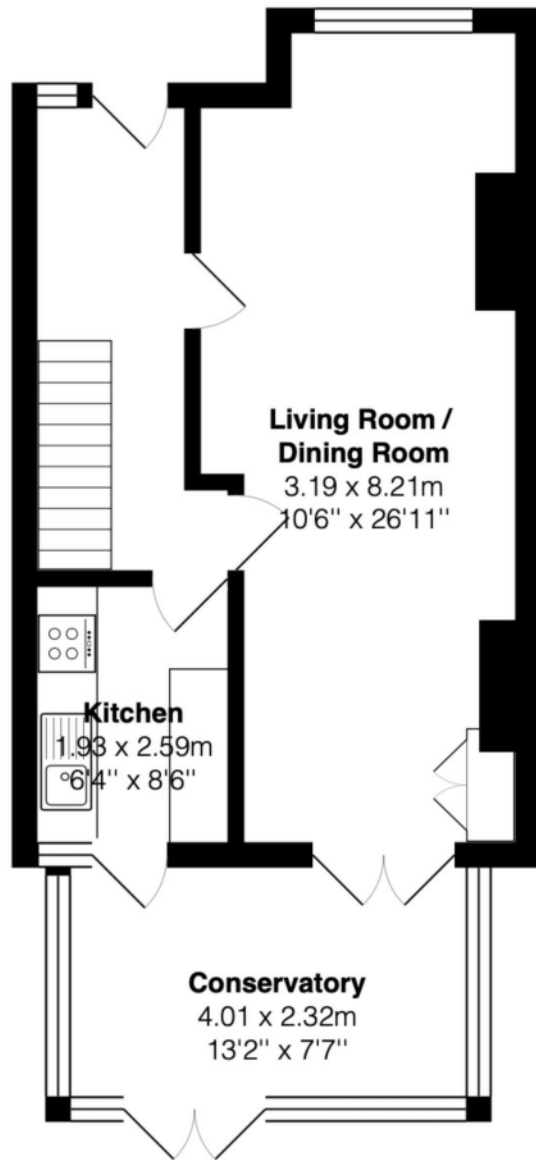




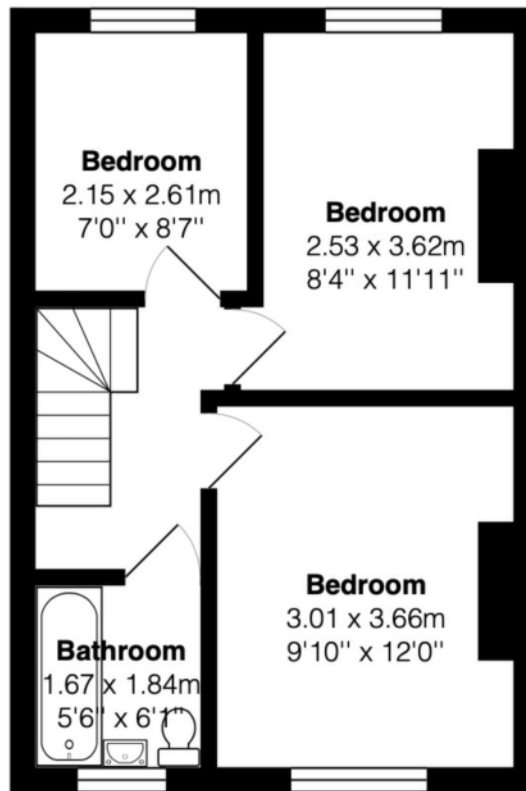


KENDRICK PROPERTY SERVICES

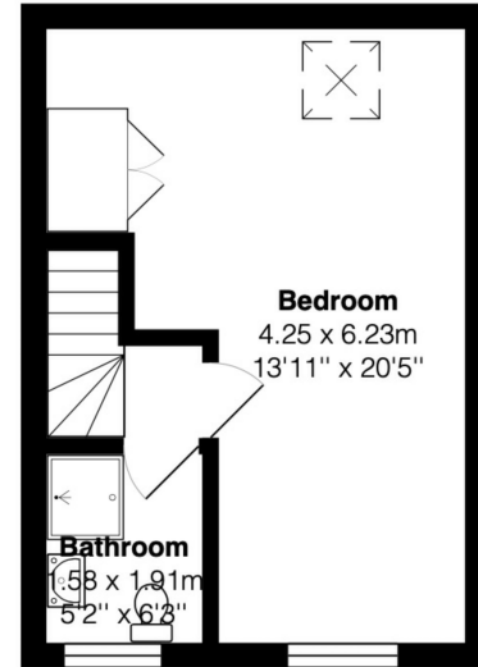




Ground Floor
Area: 48.2 m² ... 519 ft²



First Floor
Area: 36.1 m² ... 389 ft²



Second Floor
Area: 26.5 m² ... 285 ft²

Total Area: 110.8 m² ... 1193 ft²

All measurements are approximate and for display purposes only.



10 - 12 Lewes Road, Brighton, BN2 3HP

01273 600162

sales@kendrickpropertyservices.co.uk



A. These sales and particulars do not constitute any part of an offer of contract, and are for the guidance of prospective purchasers only and should not be relied on as statements of fact.

B. No representations are made in these particulars as to the condition of the property or as to whether any service or facilities are in good working order.

C. All measurements are approximate.